

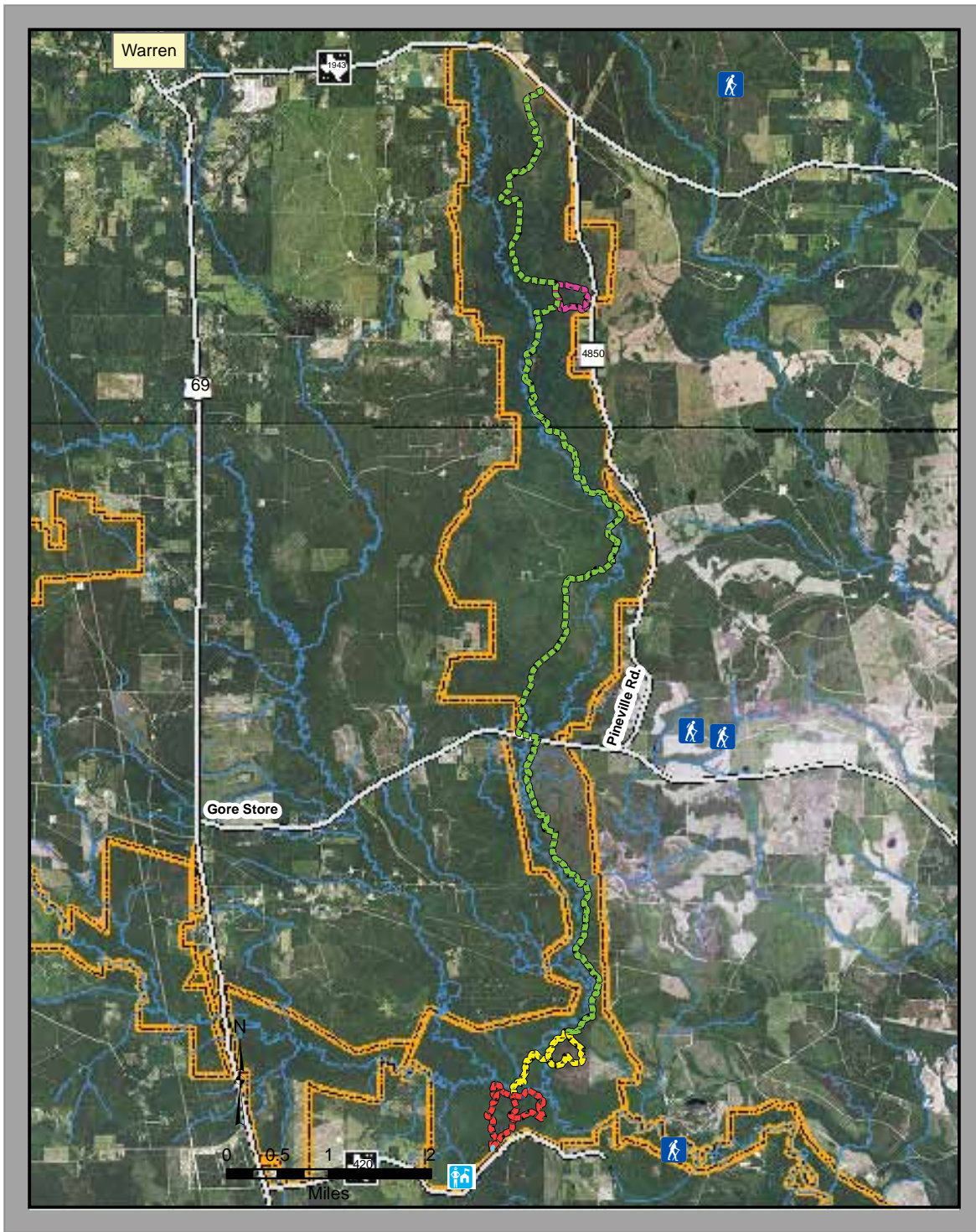


**Legend**

- Trailhead
- Ranger Station
- Turkey Creek Trail
- Pitcher Plant Trail
- Kirby Nature Trail
- Sandhill Trail
- Road
- Stream
- Big Thicket Boundary

**Activities**

- Exercising
- Hiking
- Birding
- Nature Study



**Trail Length:** Kirby - 1.7 - 2.5 Mile  
 Sandhill - 1.25 Mile  
 Pitcher Plant - 0.3 Mile  
 Turkey Creek - 14.5 Mile










**Trail Surface:** Natural/Boardwalk

**Preserve Unit:** Turkey Creek

**GPS Coordinates:** Trailhead 1 off FM 1943 - 30° 36' 50" N 94° 20' 38" W  
 Trailhead 2 off Gore Store - 30° 31' 20" N 94° 20' 50" W  
 Trailhead 3 off Gore Store - 30° 31' 16" N 94° 20' 37" W  
 Trailhead 4 off FM 420 - 30° 27' 42" N 94° 21' 4" W



**Legend**

-  Bridge
-  Parking
-  Trailhead
-  Kirby Nature Trail
-  Sandhill Trail
-  Turkey Creek Trail
-  Road
-  Stream
-  Big Thicket Boundary

**Trail Length:** Kirby Inner Loop - 1.5 Mile  
 Kirby Outer Loop - 0.9 Mile  
 Cypress Loop - 0.3 Mile  
 Sandhill Trail - 0.25 Mile  
 Sandhill Loop - 0.4 Mile  
 Turkey Creek - 14.5 Mile

**Trail Surface:** Natural/Boardwalk






**Preserve Unit:** Turkey Creek

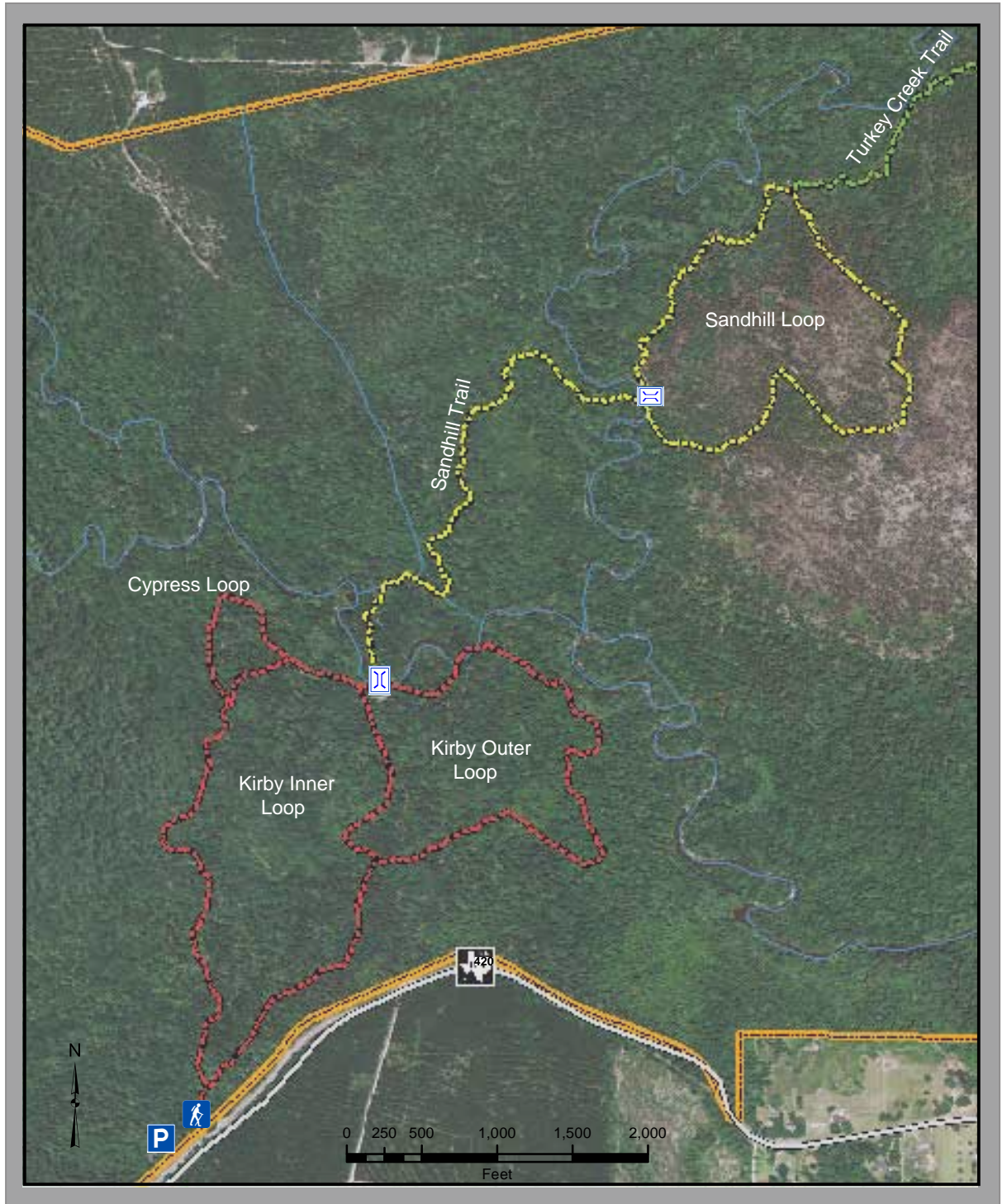
**GPS Coordinates:** 30° 27' 42" N 94° 21' 4" W

**Directions:** From the Big Thicket National Preserve Visitor Center, take FM Road 420 east for 2.4 miles. The trailhead and parking area will be on the left.



**Activities**

-  Birding
-  Exercising
-  Hiking
-  Nature Study
-  Picnic Area



# PITCHER PLANT TRAIL

## Legend



Trailhead

## Pitcher Plant Trail

- Paved
- ■ ■ ■ ■ Boardwalk
- ■ ■ ■ ■ Natural
- ■ ■ ■ ■ Turkey Creek Trail
- — — — — Road
- — — — — Stream
- ▭ Big Thicket Boundary

## Activities



Birding



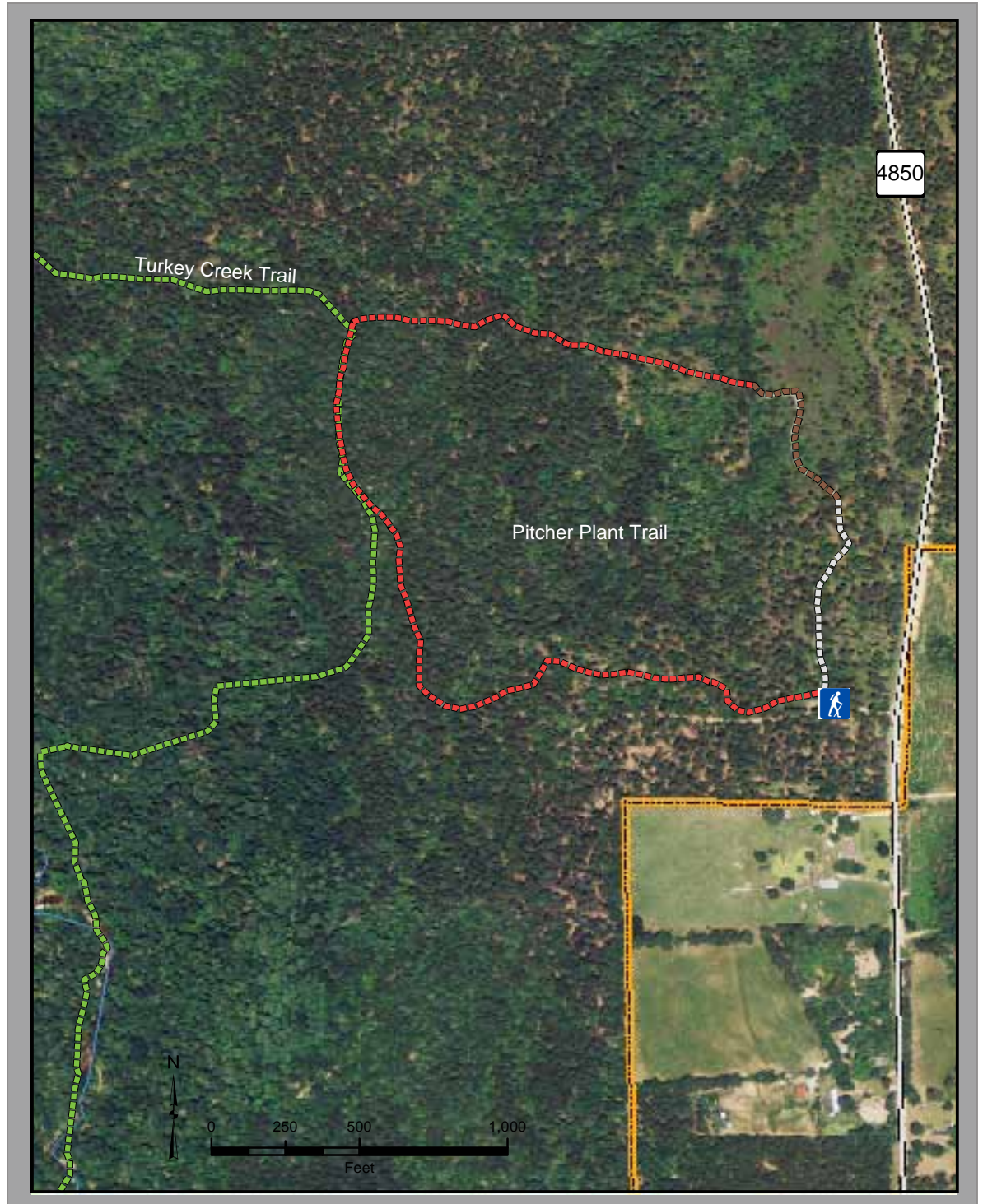
Hiking



Nature Study



Picnic Area



**Trail Length:** 1.0 Mile

**Trail Surface:** Natural/Boardwalk/Paved

**Preserve Unit:** Turkey Creek

**GPS Coordinates:** 30° 34' 57" N 94° 20' 10" W

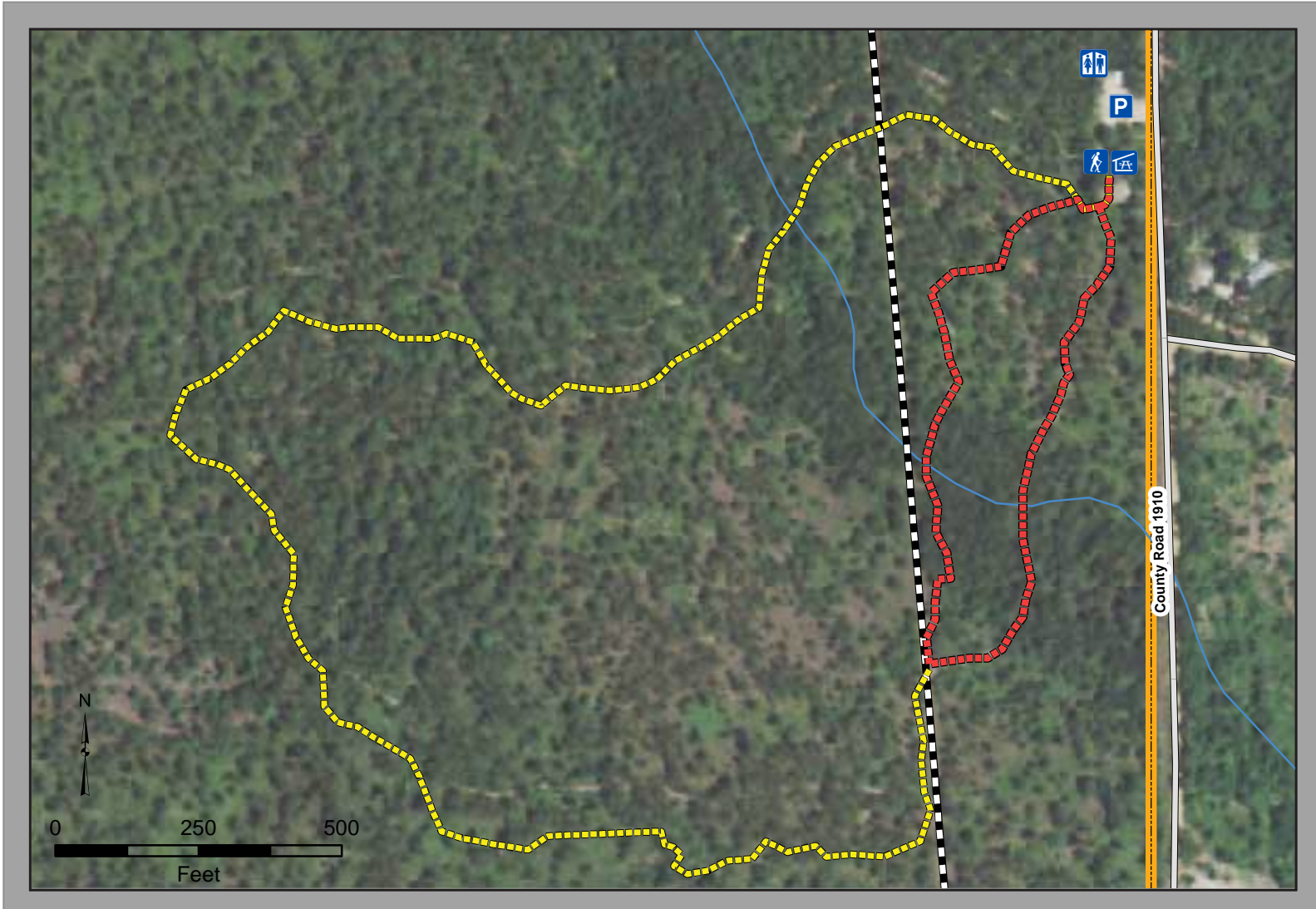
**Directions:** From the Big Thicket Visitor Center travel north on US Highway 69 for 11 miles to Warren. Turn right onto FM 1943, travel 4 miles then turn right again onto County Road 4850. The trailhead will be on the right in 2.0 miles.



**BEAUMONT**

[www.beaumontcvb.com](http://www.beaumontcvb.com)

# SUNDEW TRAIL



**Trail Length:** Inner Loop - .25 Mile  
Outer Loop - 1.00 Mile

**Trail Surface:** Inner Loop - Paved/Boardwalk  
Outer Loop - Natural/Boardwalk

**GPS Coordinates:** 30° 32' 54" N 94° 24' 35" W

**Preserve Unit:** Hickory Creek Savannah

**Directions:** From the Big Thicket Visitor Center head north on US Highway 69 for 7 miles. Turn left onto FM 2827, then turn left again onto County Road 1910. The trailhead will be on the right in .5 miles.

**Legend**

- Restroom
- Parking
- Pavilion
- Trailhead
- Inner Loop
- Outer Loop
- Pipeline
- Road
- Stream
- Big Thicket Boundary

**BEAUMONT**

[www.beaumontcvb.com](http://www.beaumontcvb.com)

**Activities**

- Hiking
- Picnic Area
- Birding
- Nature Study





**Legend**

- Parking
- Cattail Marsh Trails
- Street
- Tyrrell Park

**Cattail Marsh Activities**

- Bicycling
- Birding
- Dog Walking
- Exercising
- Horseback Riding

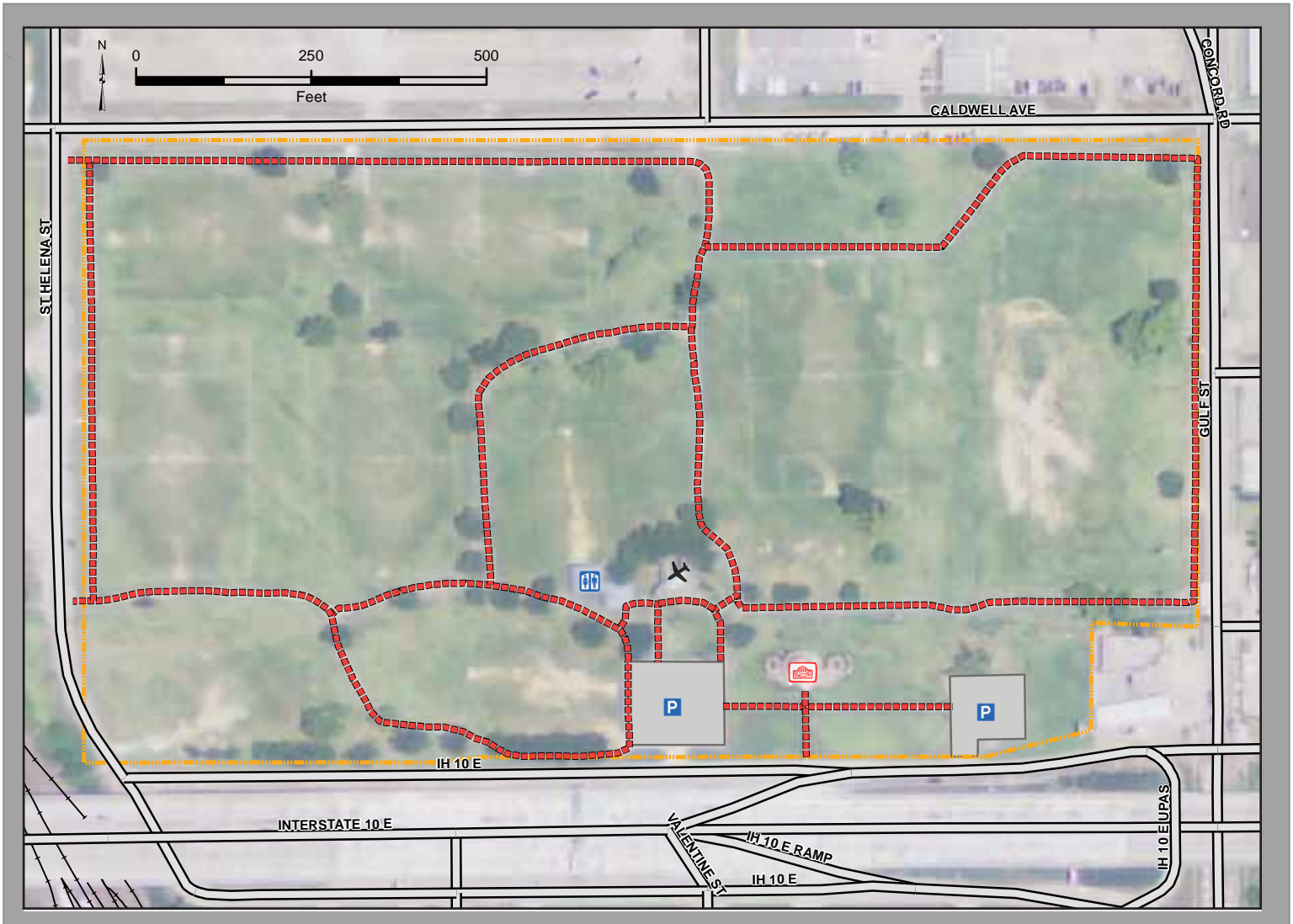


**Trail Length: 12.0 Miles**  
**Trail Surface: Gravel**  
**Physical Address: 5305 Tyrrell Park Rd., 77705**  
**GPS Coordinates: 30° 0' 28" N 94° 8' 34" W**



# BABE ZAHARIAS PARK

Dedicated 1951



### Legend

	Parking
	Restroom
	Museum
	Airplane
	Babe D. Zaharias Trail
	Street
	Railroad
	Babe Zaharias Park

### Babe Zaharias Trail Activities

	Bicycling
	Dog Walking
	Exercising
	Museum

Trail Length: 1.4 Miles  
 Trail Surface: Paved Sidewalk  
 Physical Address: 1750 IH 10 E., 77702  
 GPS Coordinates: 30° 5' 51" N 94° 6' 54" W



# Colliers Ferry Park



### Legend

- Parking
- Picnic Shelter
- Playground
- Restroom
- Boat Ramp
- Colliers Trail
- Street
- Colliers Ferry Boundary

### Colliers Ferry Park Activities

- Birding
- Boating
- Dog Walking
- Fishing
- Picnic Area
- Playground

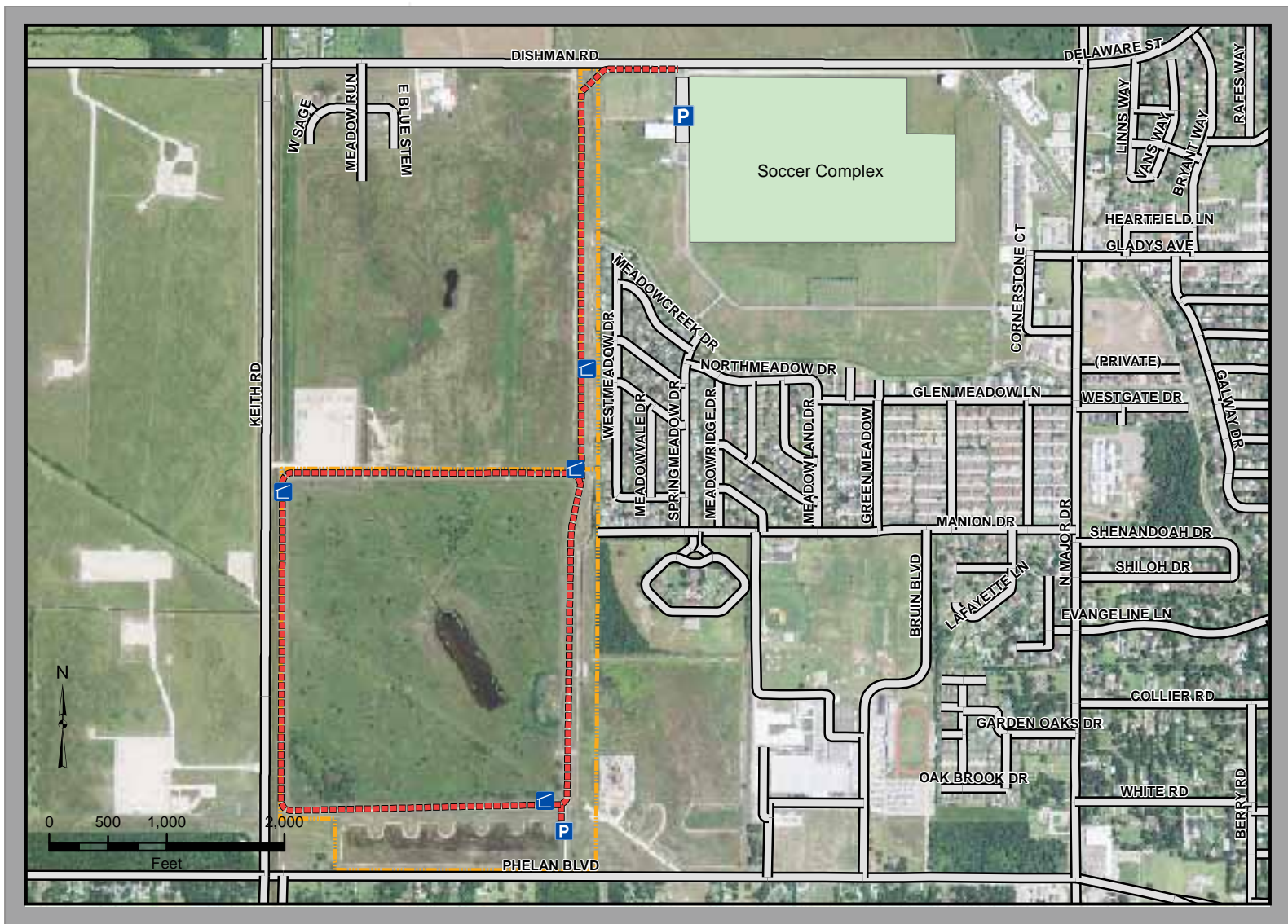


Trail Length: .5 Miles  
 Trail Surface: Crushed Granite  
 Physical Address: 5390 Pine St., 77703  
 GPS Coordinates: 30° 7' 54" N 94° 5' 44" W

**BEAUMONT**   
[www.beaumontcvb.com](http://www.beaumontcvb.com)

# GULF TERRACE HIKE & BIKE TRAIL

DEDICATED 2008



## Legend

- Parking
- Covered Area
- Gulf Terrace Trail
- Street
- Gulf Terrace Park
- Soccer Complex

## Gulf Terrace Activities

- Bicycling
- Birding
- Dog Walking
- Exercising

Trail Length: 2.75 Miles  
 Trail Surface: Paved Cement  
 Physical Address: 9310 Phelan Blvd., 77706  
 GPS Coordinates: 30° 4' 54" N 94° 12' 26" W



# BEAUMONT

[www.beaumontcvb.com](http://www.beaumontcvb.com)





# KLEIN PARK

Dedicated 1981

**Trail Length: 1.6 Miles**







**Trail Surface: Cement/Gravel**

**Physical Address: 6530 N. Major Dr., 77706**








**GPS Coordinates: 30° 8' 36" N 94° 11' 20" W**

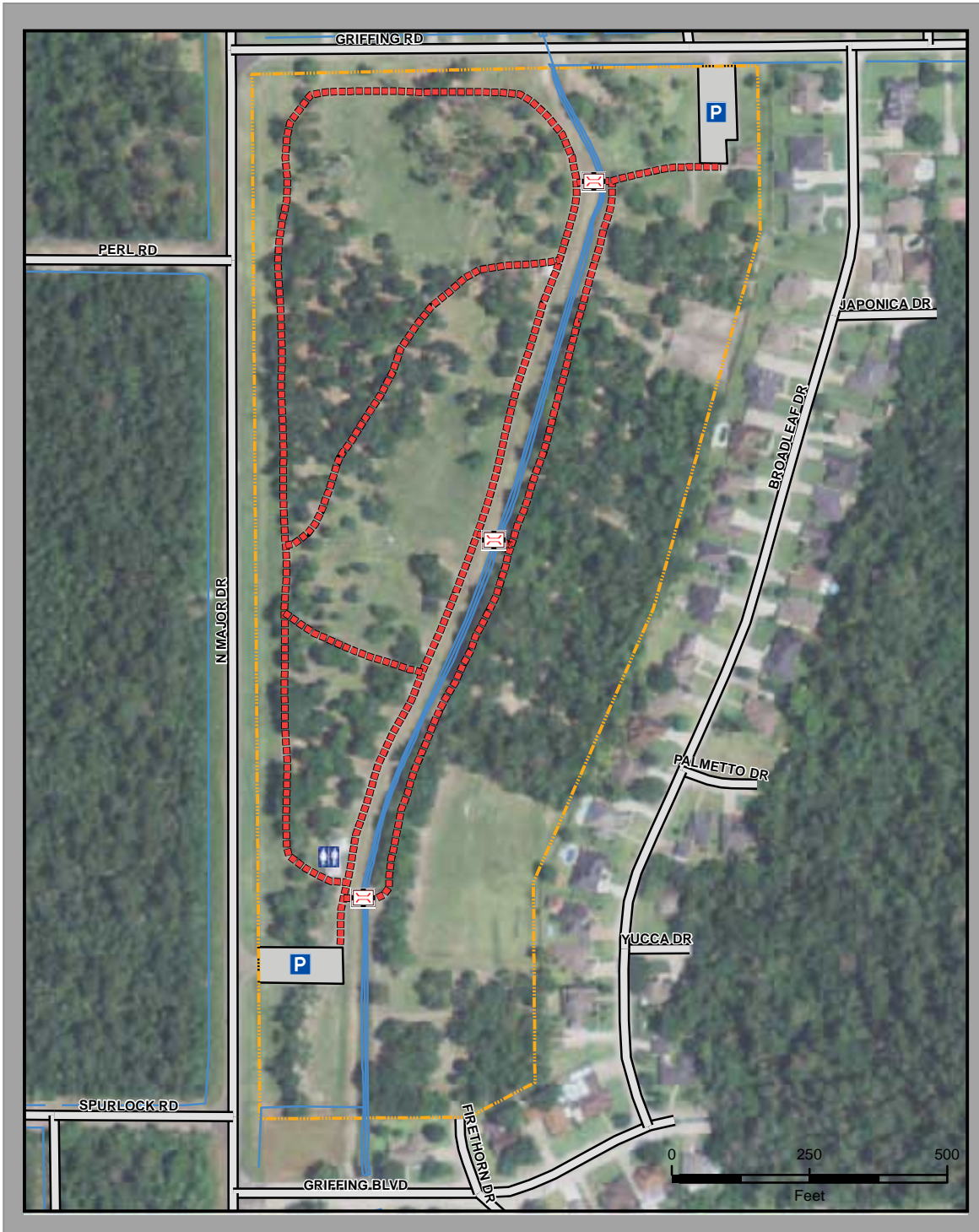


## Klein Park Activities

-  Bicycling
-  Birding
-  Dog Walking
-  Disc Golf
-  Exercising
-  Picnic Area

## Legend

-  Parking
-  Restroom
-  Bridge
-  Klein Park Trail
-  Stream
-  Street
-  Klein Park



# Perlstein Park

## Legend

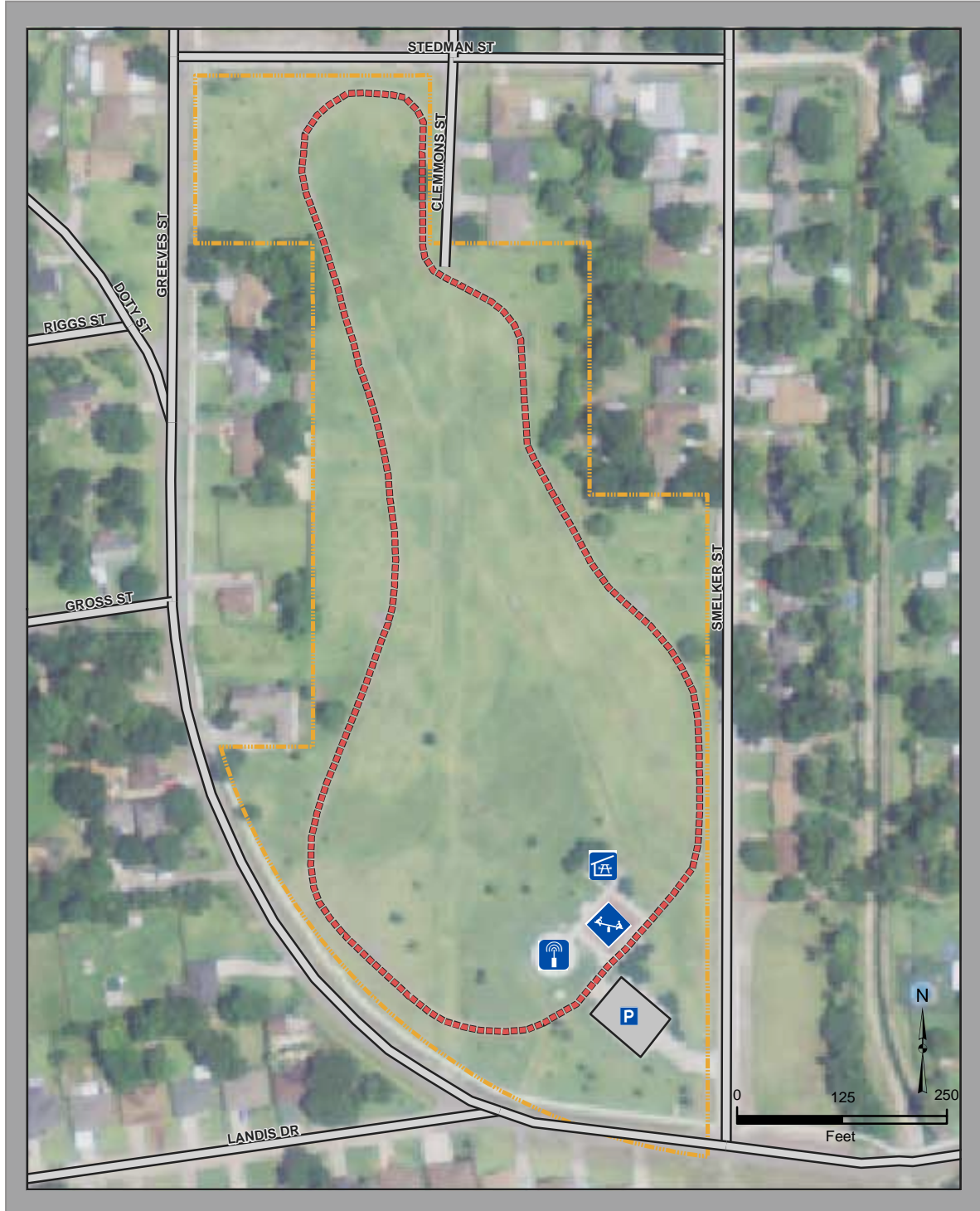
- Parking
- Picnic Shelter
- Playground
- Spraypad
- Perlstein Park Trail
- Street
- Perlstein Park

Trail Length: 0.50 Miles  
Trail Surface: Asphalt  
Physical Address: 8900 Landis Dr., 77706  
GPS Coordinates: 30° 4' 9" N 94° 11' 48" W

**BEAUMONT**   
www.beaumontcvb.com

## Perlstein Park Activities

- Bicycling
- Dog Walking
- Exercising
- Playground
- Picnic Area
- Spraypad





# RIVERFRONT PARK

Dedicated 1986

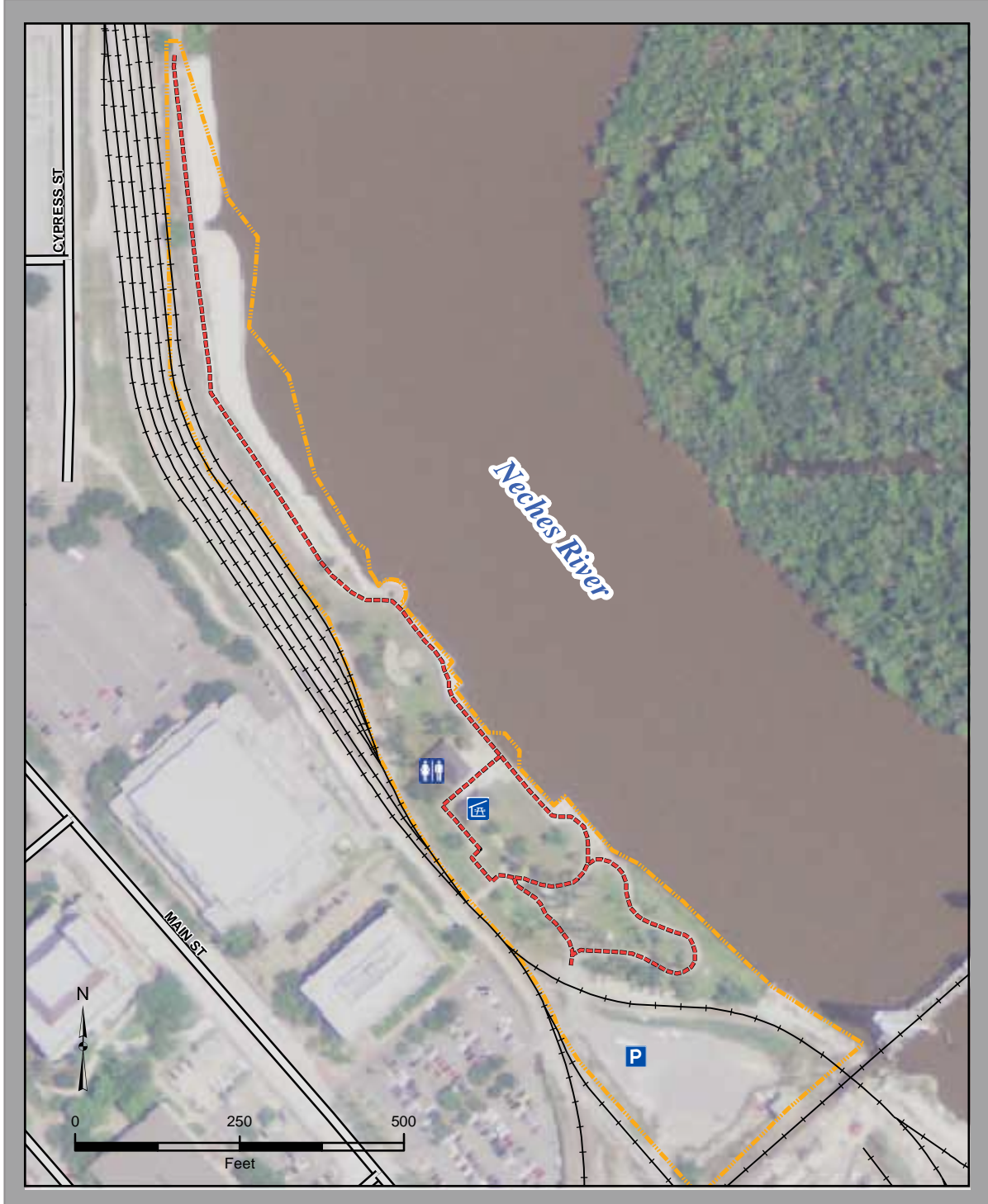
### Legend

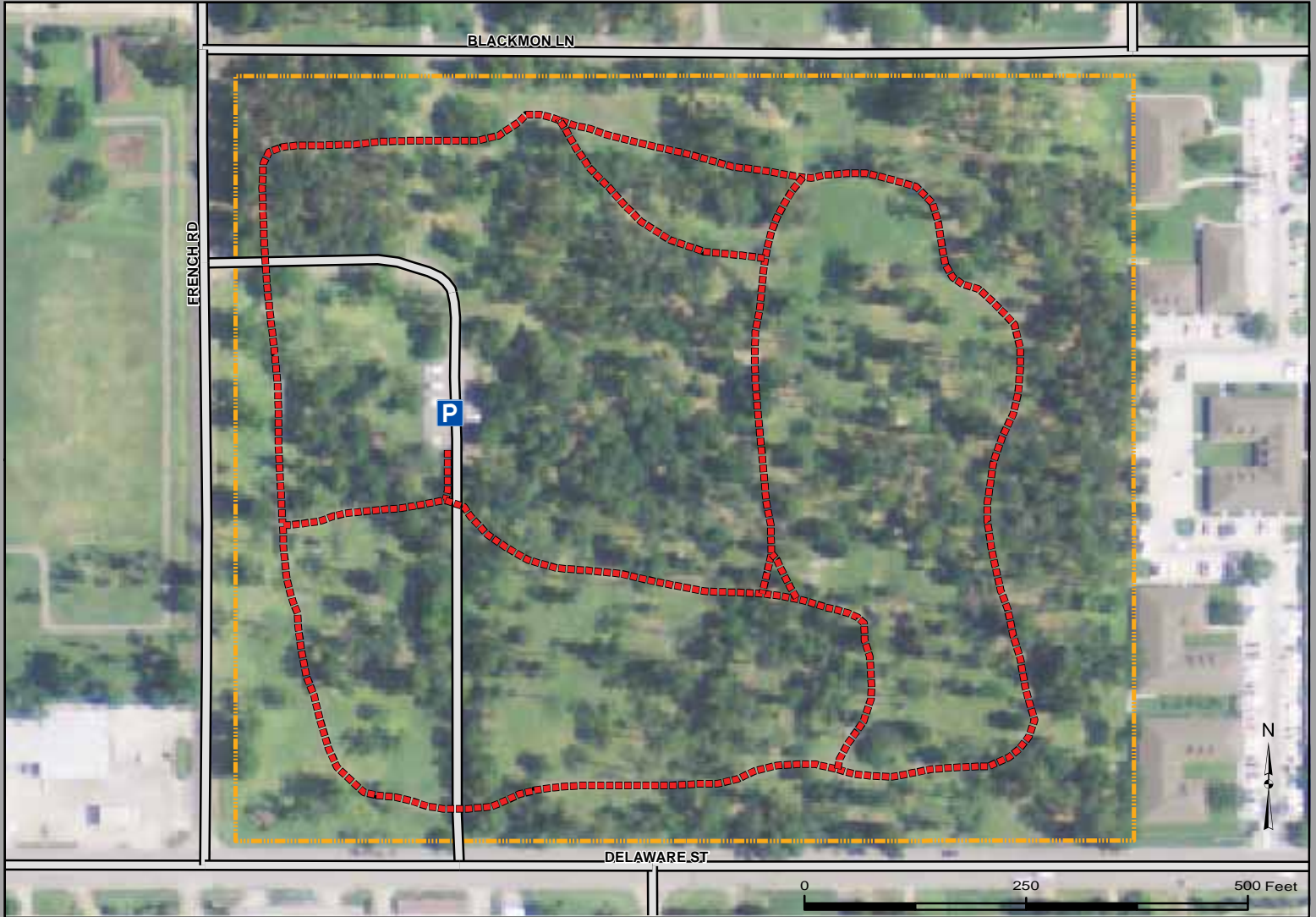
-  Parking
-  Picnic Shelter
-  Restroom
-  River Front Trail
-  Railroad
-  Street
-  River Front Park

**Trail Length: 0.5 Miles**  
**Trail Surface: Cement Sidewalk**  
**Physical Address: 805 Main St., 77701**  
**GPS Coordinates: 30° 4' 57" N 94° 5' 38" W**

### River Front Park Activities

-  Fishing
-  Birding
-  Picnic Area





**Legend**

- Parking
- Wuthering Heights Trail
- Street
- Wuthering Heights Park

**Trail Length: 1.01 Miles**  
**Trail Surface: Asphalt**  
**Physical Address: 3650 Delaware St., 77706**  
**GPS Coordinates: 30° 6' 20" N 94° 8' 29" W**



**Wuthering Heights Park Activities**

- Bicycling
- Birding
- Dog Walking
- Exercising
- Playground

