

Tuba 1 in E \flat (CB)

Viking Spirit - part II

Fra Borge

(Tunes from Lofoten)

Torstein Aagaard-Nilsen

1997

Lento (♩ = 64)



6 **A** Poco piu mosso



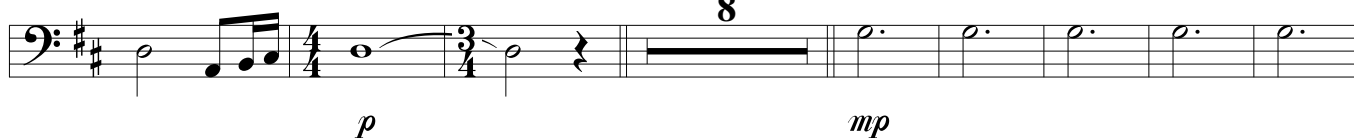
20 **B** Lento **Molto rit.**



30 **Maestoso** (♩ = 72)



38 **C** Lusingando **D**



54 **E**



Tuba 1 in E \flat (CB)

-2- (Tunes from Lofoten)

F

4

mf f

Musical notation for section F: A single staff in bass clef with a key signature of one sharp (F#). It begins with a four-measure rest, followed by a half note, a dotted half note, a half note, and a quarter note. A crescendo hairpin starts under the dotted half note and ends under the quarter note. The section concludes with a quarter rest, followed by an eighth-note triplet, an eighth note, and a half note.

G

Maestoso

Musical notation for section G: A single staff in bass clef with a key signature of two flats (Bb, Eb). It consists of a series of eighth notes, some with accents, and some beamed together in pairs.

81

H

Musical notation for section H: A single staff in bass clef with a key signature of two flats (Bb, Eb). It continues the eighth-note pattern from section G, with some notes beamed in pairs and others as single eighth notes.

87

I

Molto rit.

dim. mp p

Musical notation for section I: A single staff in bass clef with a key signature of two flats (Bb, Eb). It begins with eighth notes, followed by a half note, a dotted half note, and a half note. A decrescendo hairpin starts under the half note and ends under the dotted half note. The section continues with a quarter note, an eighth-note triplet, an eighth note, and a half note. The final measure contains a half note with a fermata.