












**Legend**

-  Bridge
-  Parking
-  Trailhead
-  Kirby Nature Trail
-  Sandhill Trail
-  Turkey Creek Trail
-  Road
-  Stream
-  Big Thicket Boundary

**Trail Length:** Kirby Inner Loop - 1.5 Mile  
 Kirby Outer Loop - 0.9 Mile  
 Cypress Loop - 0.3 Mile  
 Sandhill Trail - 0.25 Mile  
 Sandhill Loop - 0.4 Mile  
 Turkey Creek - 14.5 Mile

**Trail Surface:** Natural/Boardwalk






**Preserve Unit:** Turkey Creek

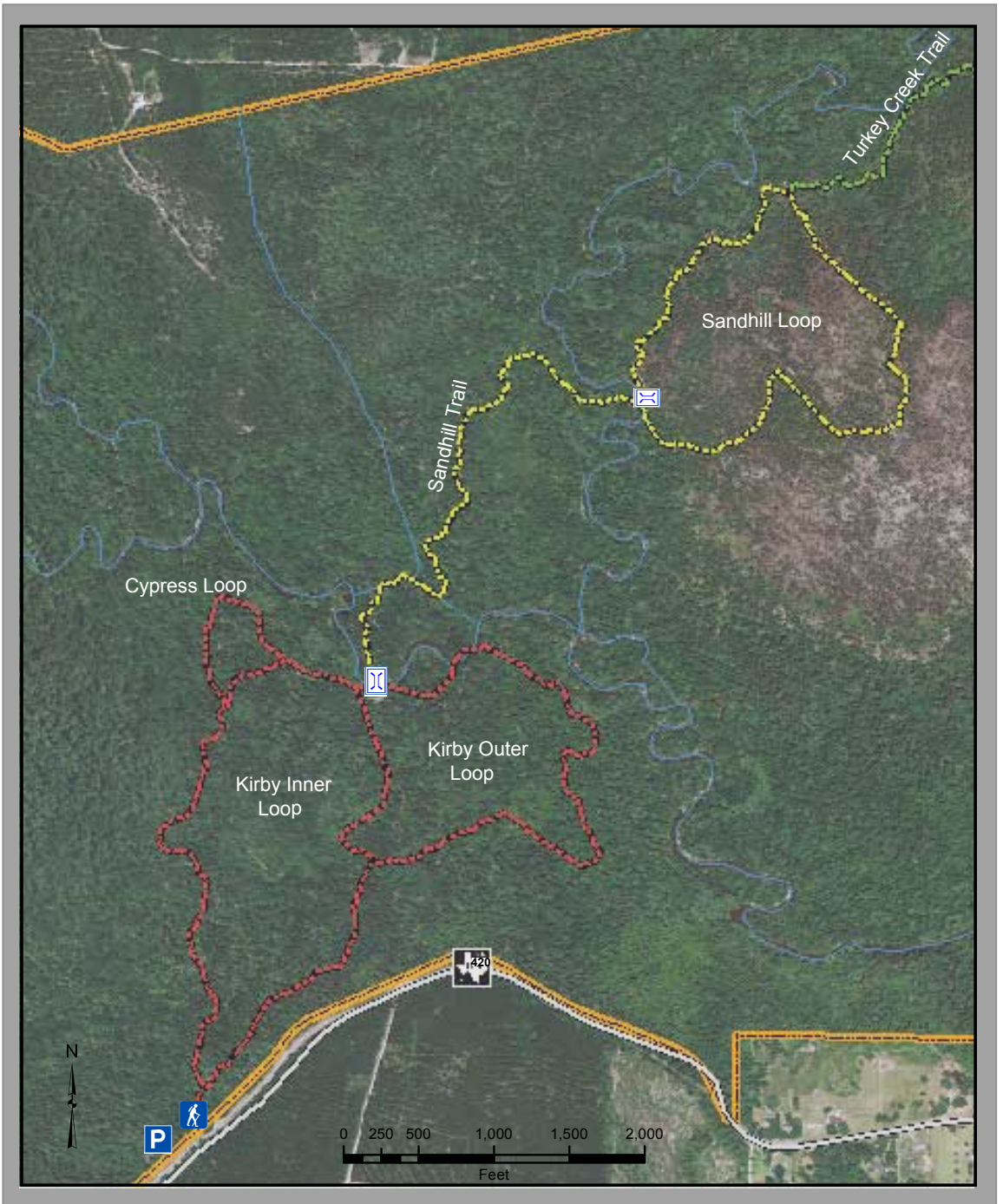
**GPS Coordinates:** 30° 27' 42" N 94° 21' 4" W

**Directions:** From the Big Thicket National Preserve Visitor Center, take FM Road 420 east for 2.4 miles. The trailhead and parking area will be on the left.



**Activities**

-  Birding
-  Exercising
-  Hiking
-  Nature Study
-  Picnic Area







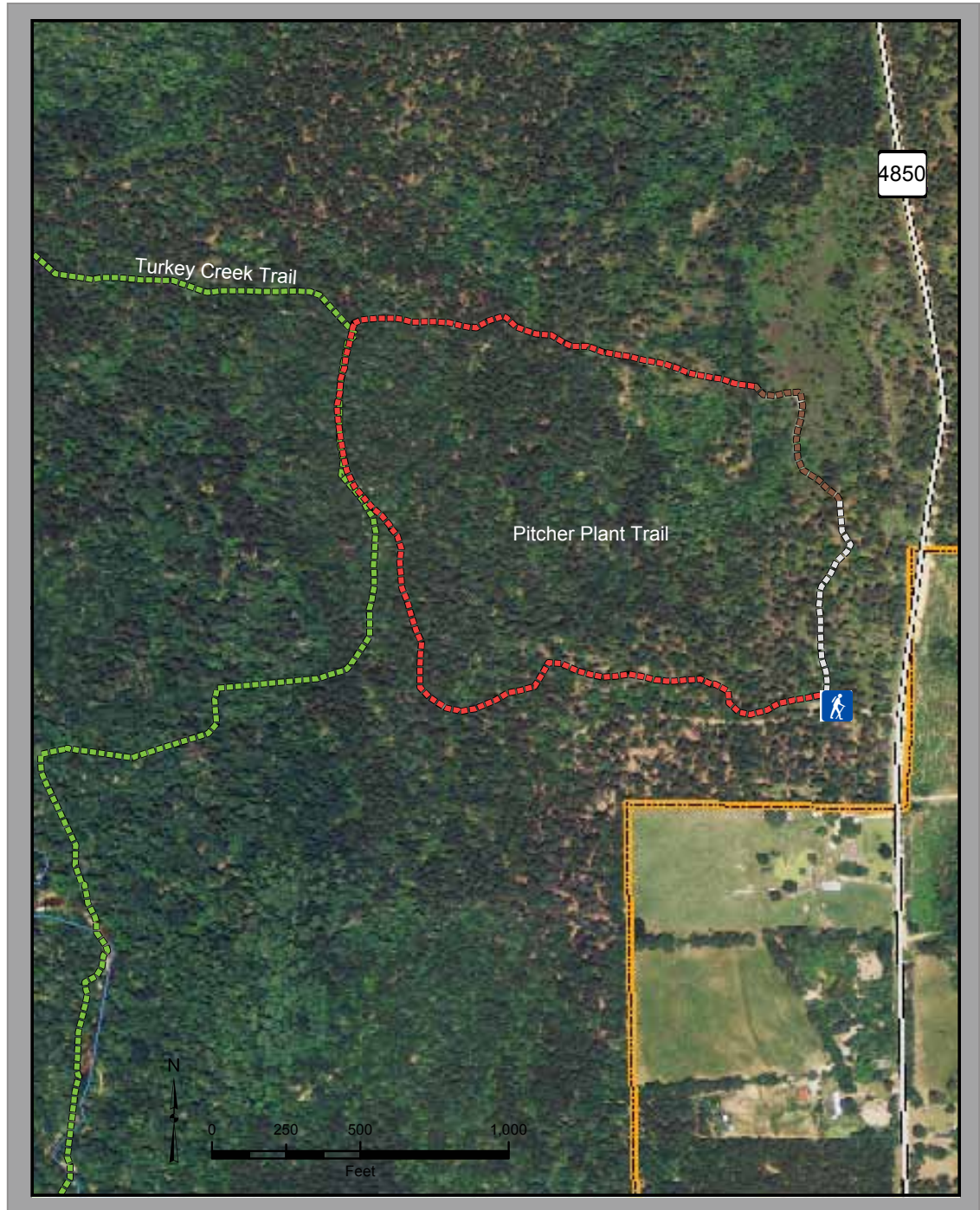
# PITCHER PLANT TRAIL

**Legend**

- Trailhead
- Pitcher Plant Trail**
- Paved
- Boardwalk
- Natural
- Turkey Creek Trail
- Road
- Stream
- Big Thicket Boundary

**Activities**

- Birding
- Hiking
- Nature Study
- Picnic Area

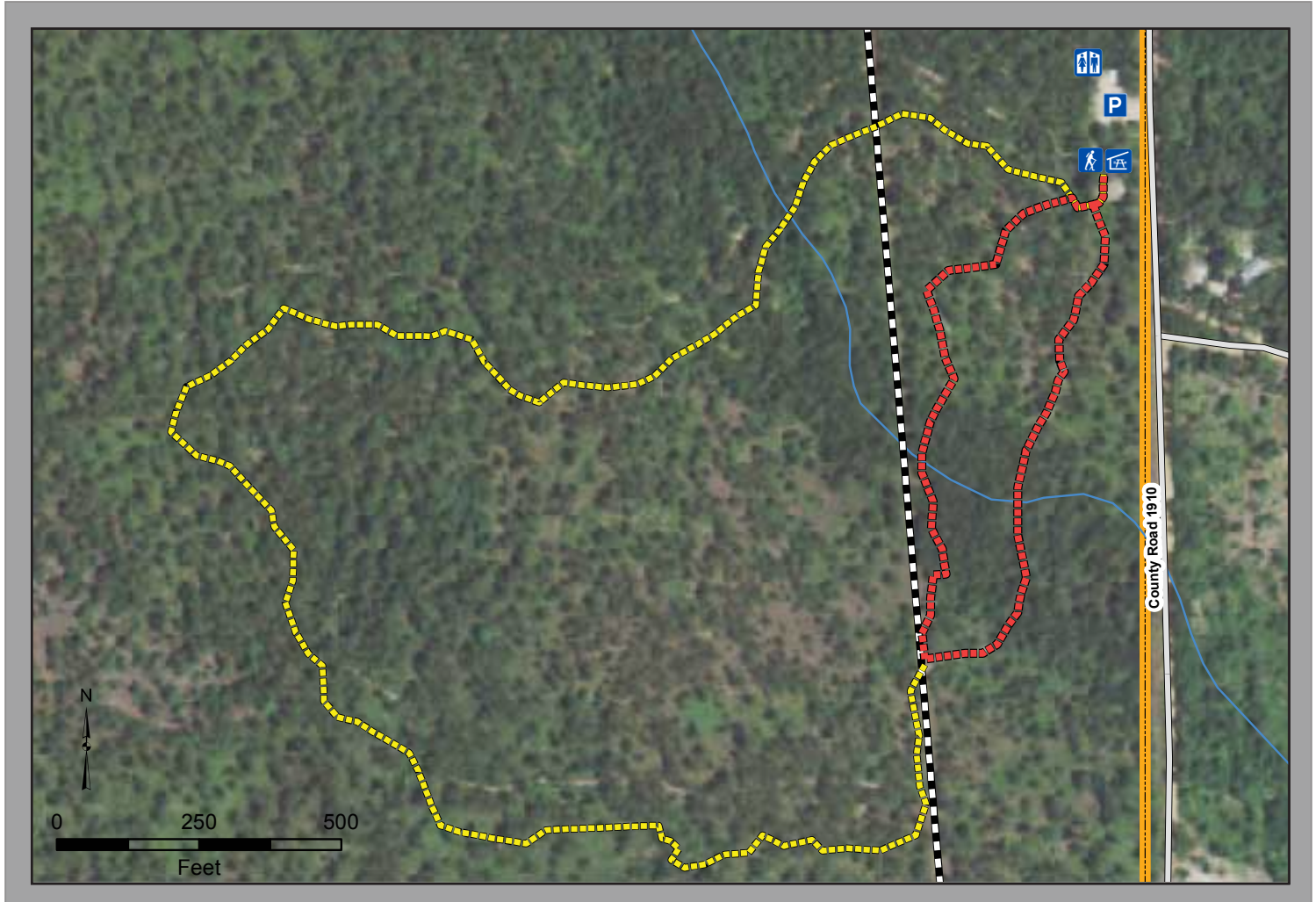


**Trail Length:** 1.0 Mile  
**Trail Surface:** Natural/Boardwalk/Paved  
**Preserve Unit:** Turkey Creek  
**GPS Coordinates:** 30° 34' 57" N 94° 20' 10" W

**Directions:** From the Big Thicket Visitor Center travel north on US Highway 69 for 11 miles to Warren. Turn right onto FM 1943, travel 4 miles then turn right again onto County Road 4850. The trailhead will be on the right in 2.0 miles.







**Trail Length:** Inner Loop - .25 Mile  
Outer Loop - 1.00 Mile

**Trail Surface:** Inner Loop - Paved/Boardwalk  
Outer Loop - Natural/Boardwalk

**GPS Coordinates:** 30° 32' 54" N 94° 24' 35" W

**Preserve Unit:** Hickory Creek Savannah

**Directions:** From the Big Thicket Visitor Center head north on US Highway 69 for 7 miles. Turn left onto FM 2827, then turn left again onto County Road 1910. The trailhead will be on the right in .5 miles.

**Legend**

- Restroom
- Parking
- Pavilion
- Trailhead
- Inner Loop
- Outer Loop
- Pipeline
- Road
- Stream
- Big Thicket Boundary

**BEAUMONT**

[www.beaumontcvb.com](http://www.beaumontcvb.com)

**Activities**

- Hiking
- Picnic Area
- Birding
- Nature Study
















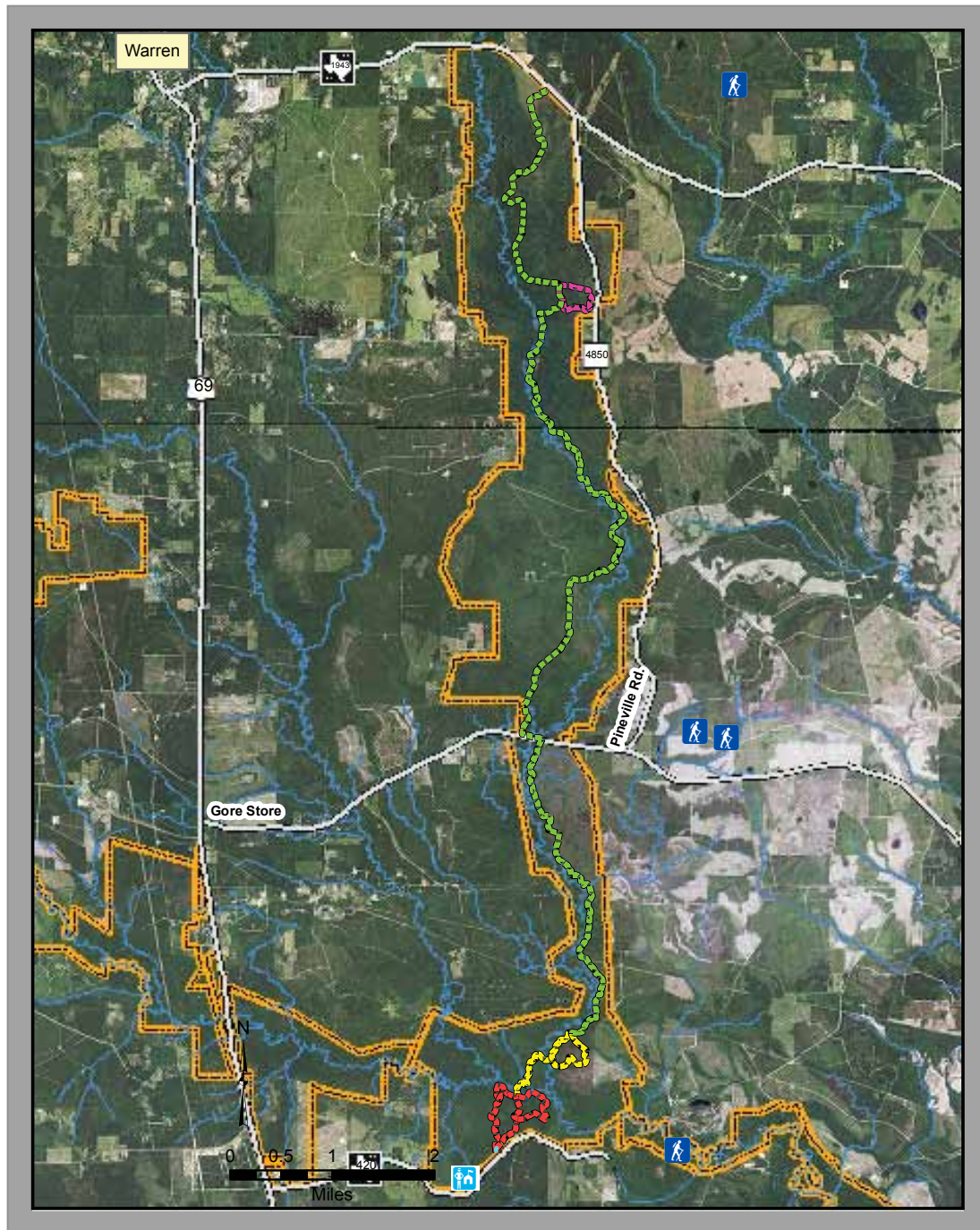
**BEAUMONT**   
www.beaumontcvb.com

**Legend**

-  Trailhead
-  Ranger Station
-  Turkey Creek Trail
-  Pitcher Plant Trail
-  Kirby Nature Trail
-  Sandhill Trail
-  Road
-  Stream
-  Big Thicket Boundary

**Activities**

-  Exercising
-  Hiking
-  Birding
-  Nature Study



**Trail Length:** Kirby - 1.7 - 2.5 Mile  
 Sandhill - 1.25 Mile  
 Pitcher Plant - 0.3 Mile  
 Turkey Creek - 14.5 Mile

**Trail Surface:** Natural/Boardwalk

**Preserve Unit:** Turkey Creek

**GPS Coordinates:** Trailhead 1 off FM 1943 -30° 36' 50" N 94° 20' 38" W  
 Trailhead 2 off Gore Store -30° 31' 20" N 94° 20' 50" W  
 Trailhead 3 off Gore Store -30° 31' 16" N 94° 20' 37" W  
 Trailhead 4 off FM 420 -30° 27' 42" N 94° 21' 4" W