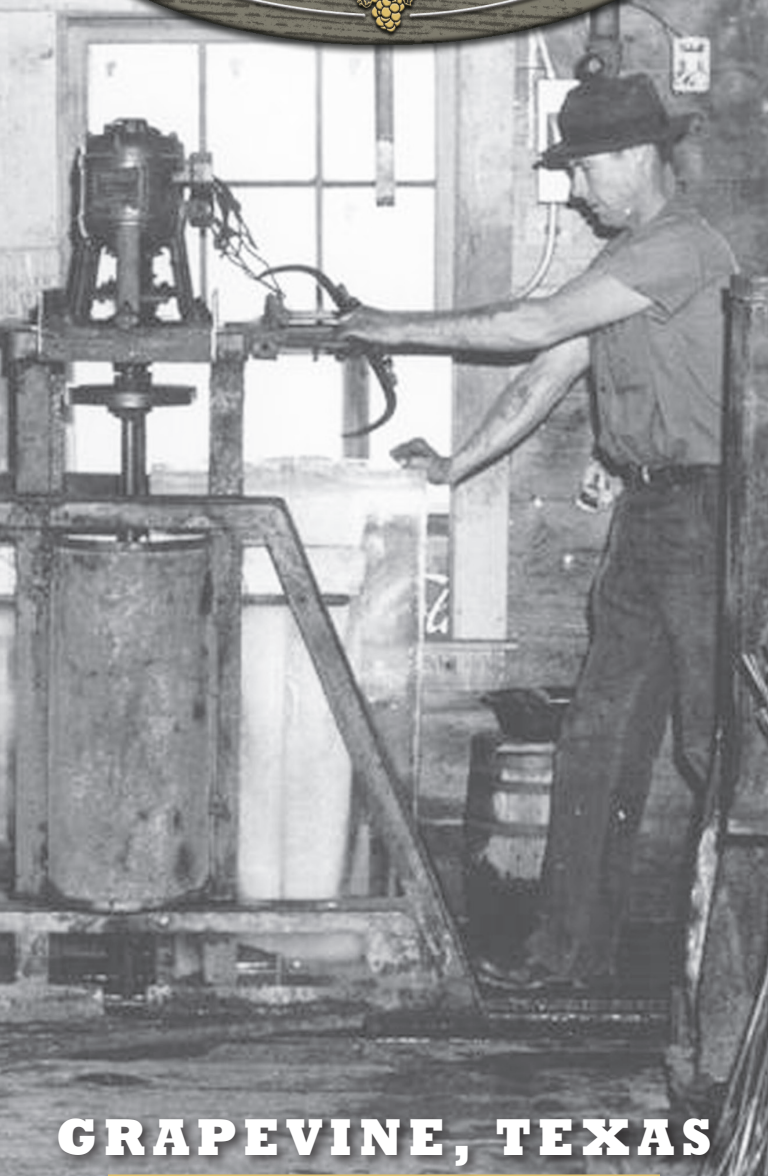


GRAPEVINE Historical MUSEUM



GRAPEVINE, TEXAS

www.GrapevineMuseums.com

GRAPEVINE HISTORICAL MUSEUM

Visitors to the Grapevine Historical Museum explore the cultural and family life of early Grapevine residents in such areas as agriculture, industry, childhood and more.



Museum experience includes:

- A trip through Grandma's attic;
- Childhood memories with 19th century toys and dolls;
- Farm and dairy life exhibit;
- Stories of life on the Grape Vine Prairie;
- Restored wedding gowns from the late 19th century, 1920s and 1940s and
- Much more.



The Grapevine Historical Museum is housed in the replica Grapevine Ice Company building. The Ice House was an important and thriving business in Grapevine well into the 1970s.

The Grapevine Historical Museum is a part of the Settlement to City Museums at Ted R. Ware Plaza. This collection of museums also includes the Keeling House Museum, the Donald Schoolhouse and the Cotton Ginner's Museum.

Admission is free.

206 W. Hudgins St. • 817.410.3526

Open Tuesday — Saturday, 10 a.m. — 4 p.m. and Sunday, Noon — 4 p.m.

Grapevine Visitors Shuttle will stop upon request.