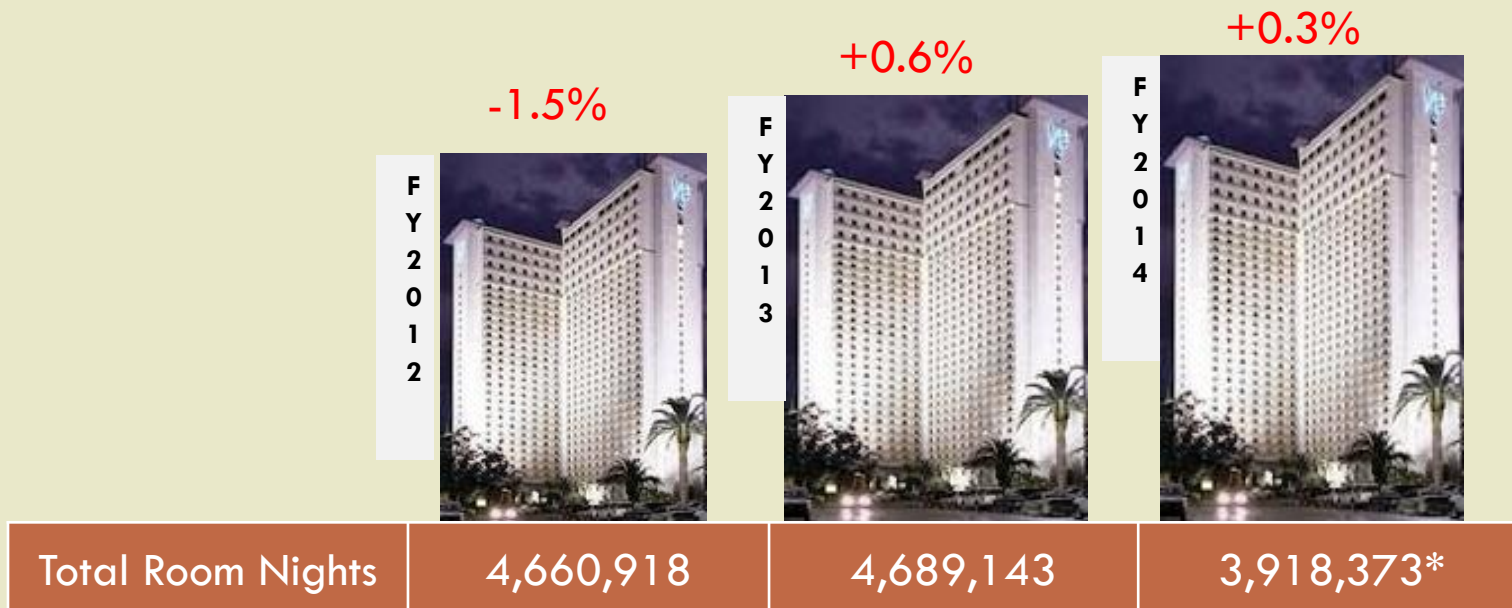




2

HOTEL OCCUPANCY

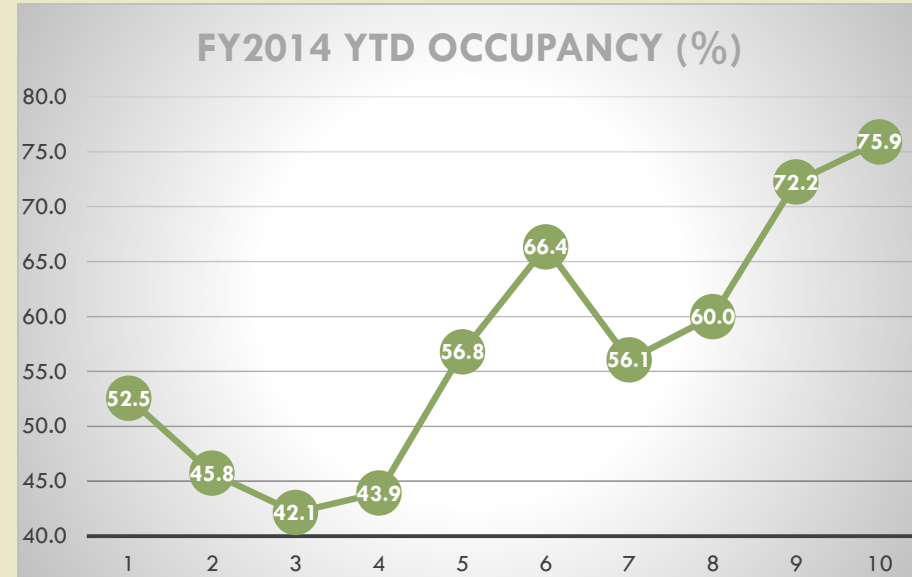


*Note: FY2014 numbers are FY-YTD

Regional Hotel Occupancy

3

Annual	FY2012	FY2013	FY2014*
Occupancy %	63.0	59.4	57.2
% Δ	+2.5%	-5.7%	-3.6%
ADR (\$)	82.00	83.62	85.88
% Δ	-1.3%	+2.0%	+2.7%
RevPAR (\$)	51.93	49.65	49.15
% Δ	+1.1%	-4.4%	-1.0%



FY2014-YTD	Oct	Nov	Dec	Jan	Feb	Mar	Apr	May	Jun	Jul
Occupancy (%)	52.5	45.8	42.1	43.9	56.8	66.4	56.1	60.0	72.2	75.9
ADR	87.45	76.74	75.53	74.59	80.38	84.24	86.61	89.44	94.95	95.54
RevPAR	45.95	35.11	31.84	32.77	45.65	55.90	48.56	53.66	68.60	72.52

*Note: FY2014 numbers are FY-YTD

Occupancy and ADR – August 2014

Weekday vs. Weekend (Running 28 Day)

4

Harrison County	Sun	Mon	Tues	Wed	Thurs	WD	Fri	Sat	WE	Total
Occupancy (%)	55.8	64.9	65.9	66.0	65.9	63.7	86.4	93.4	89.9	71.2
ADR (\$)	85.21	89.11	90.11	89.69	88.94	88.72	106.77	109.23	108.05	95.70
RevPAR (\$)	47.58	57.84	59.35	59.17	58.63	56.51	92.20	102.00	97.10	68.12

Jackson County	Sun	Mon	Tues	Wed	Thurs	WD	Fri	Sat	WE	Total
Occupancy (%)	46.2	53.4	53.9	53.0	52.9	51.9	70.9	76.2	73.5	68.3
ADR (\$)	64.22	67.70	68.21	68.29	65.95	66.95	77.41	78.94	78.21	71.02
RevPAR (\$)	29.68	36.15	36.77	36.20	34.86	34.73	54.89	60.15	57.52	41.24

Gulf Coast Region	Sun	Mon	Tues	Wed	Thurs	WD	Fri	Sat	WE	Total
Occupancy (%)	53.7	62.1	62.9	62.8	63.0	60.9	83.3	90.0	86.7	68.3
ADR	80.95	84.77	85.71	85.42	84.43	84.35	101.17	103.46	102.36	90.89
RevPAR	43.46	52.68	53.89	53.64	53.22	51.38	84.25	93.15	88.70	62.05

5

CASINO OCCUPANCY

Annual	FY2012	FY2013	FY2014*
Total Room Nights	2,057,744	2,021,005	1,545,635
% Δ	+1.0%	-1.8%	+2.2%
Occupancy %	86.7	85.9	88.7
% Δ	+5.2%	-0.8%	+4.7%
ADR (\$)	74.84	83.62	85.88
% Δ	-1.3%	+2.0%	+2.7%
RevPAR (\$)	51.93	49.65	49.15
% Δ	+1.1%	-4.4%	-1.0%

*Note: FY2014 numbers are FY-YTD

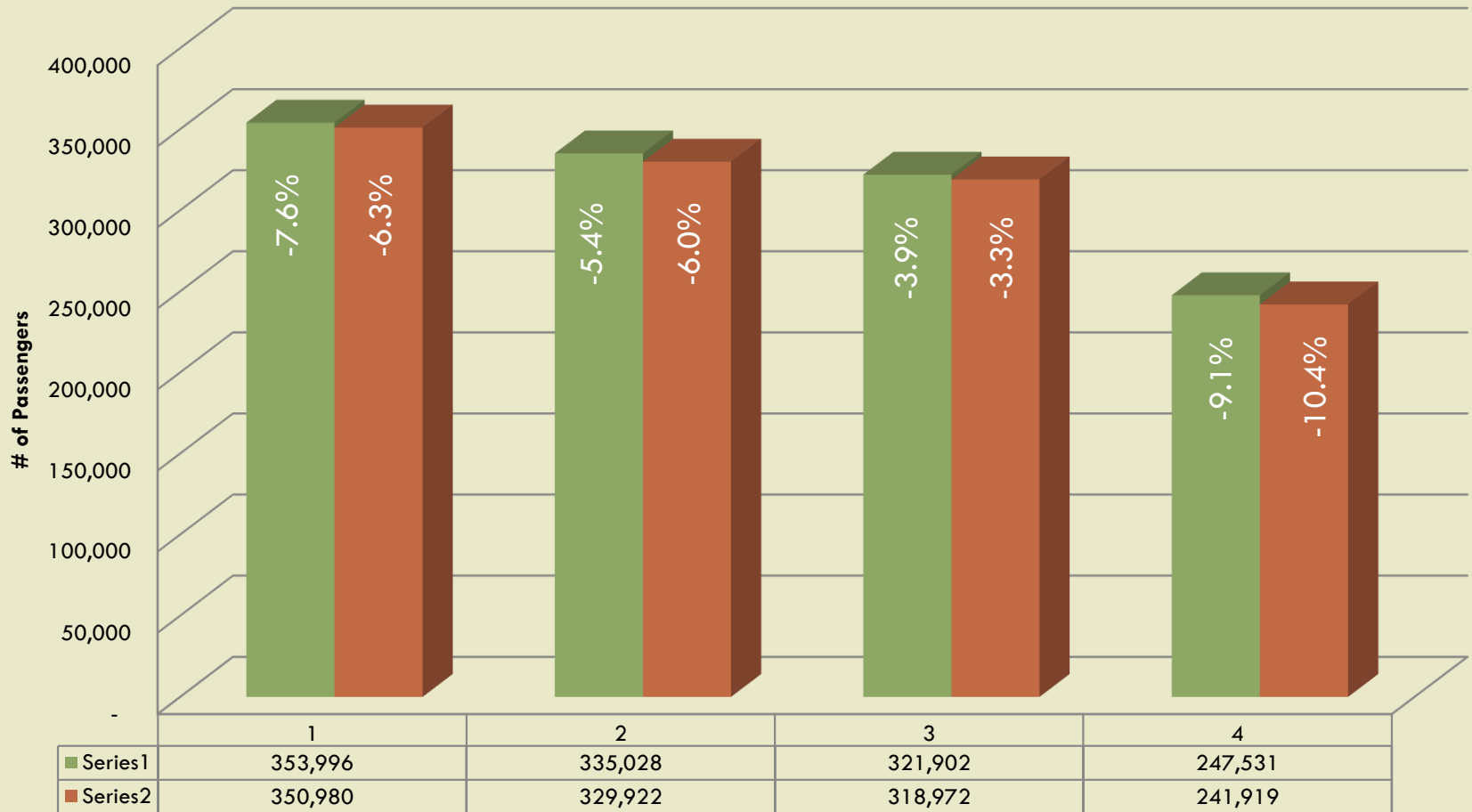
Regional Casino Statistics

Annual	FY2012	FY2013	FY2014*
# of Conferences	832	920	796
% Δ	N/A	+10.6%	+19.0%
Conference Attendees	110,820	121,231	88,779
% Δ	N/A	9.4%	30.7%
Ticketed Show/Concert Attendees	304,993	400,519	365,345
% Δ	N/A	31.3%	37.5%
# of Patrons	14,916,344	14,514,756	11,368,329
% Δ	-4.2%	-2.7%	+3.7%



*Note: FY2014 numbers are FY-YTD

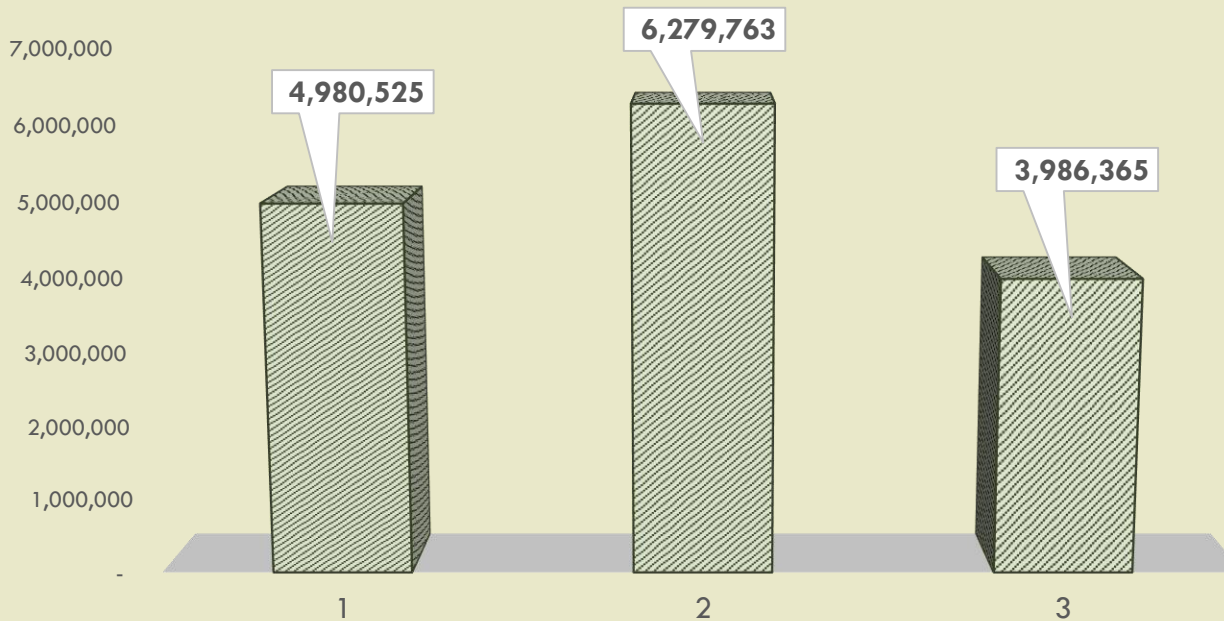
Enplaned/Deplaned



*Note: FY2014 numbers are FY-YTD

MSGC ATTRACTIONS

ATTRACTION VISITORS



*Note: FY2014 numbers are FY-YTD

Number of Attraction Visitors

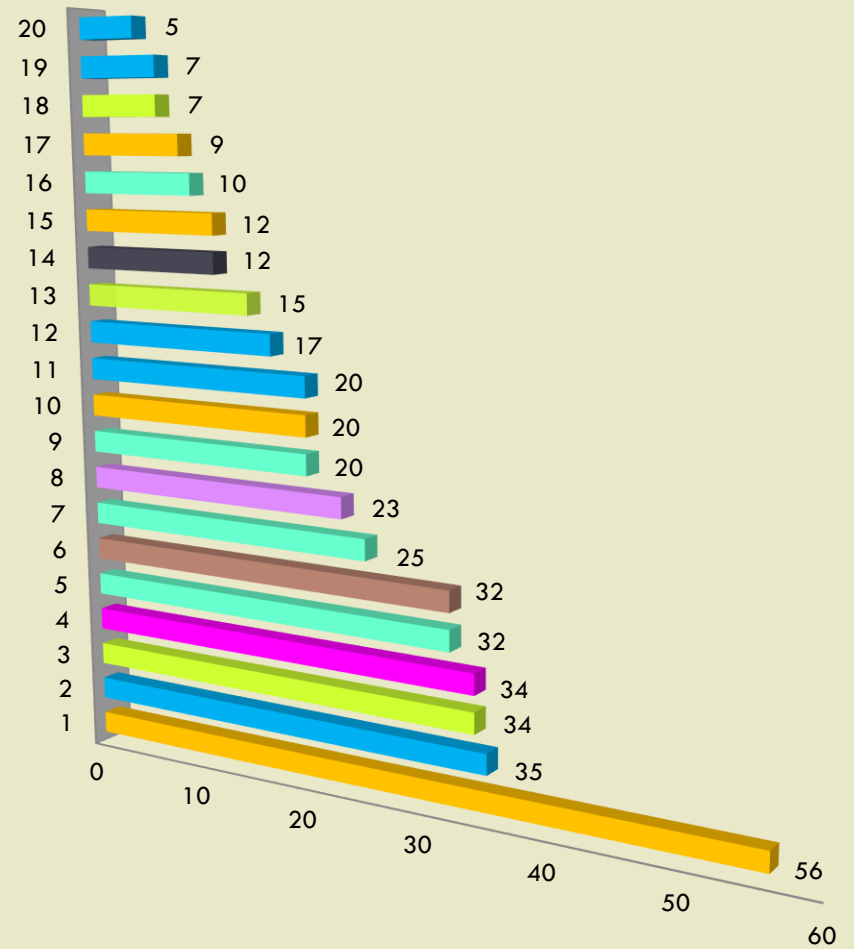
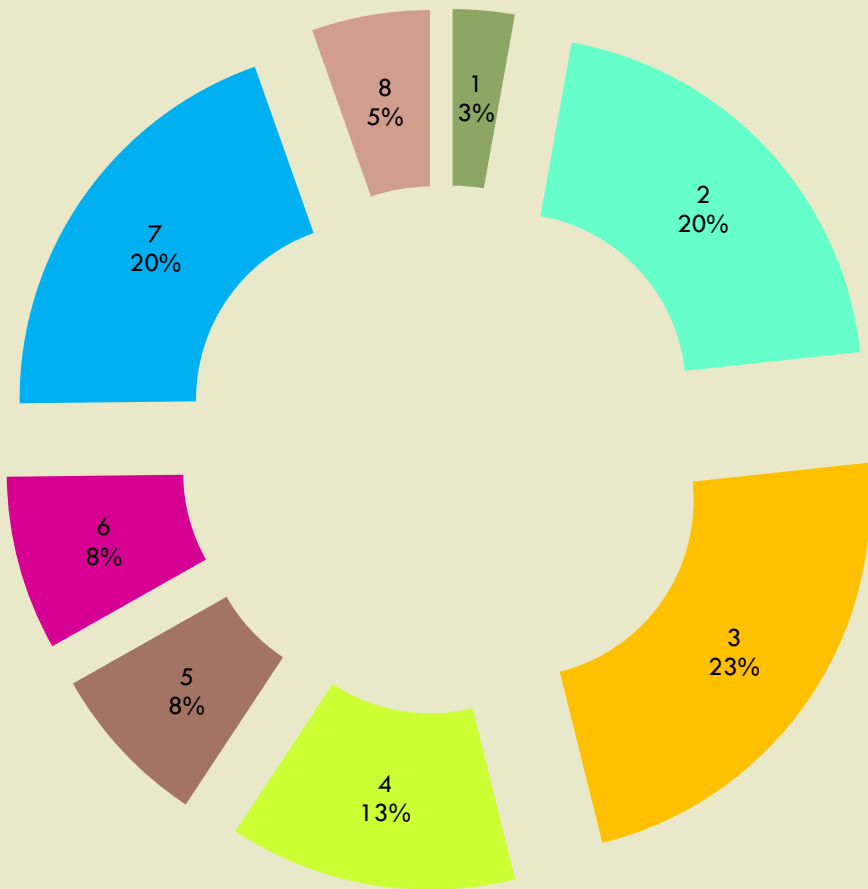
Category	2011	2012	2013	2014 YTD	% Reporting
<i>All Attractions</i>	4,271,770	4,980,525	6,279,762	3,986,364	32%
Arts & Culture	299,608	597,947	1,061,664	577,725	21%
Beaches & Outdoor Activities	171,280	170,229	182,096	135,983	22%
Casinos	301,629	317,102	500,007	168,782	N/A
Family	504,583	907,942	1,533,846	1,129,567	24%
Golf	116,909	108,196	91,980	55,886	18%
Nightlife	2,864,619	2,864,619	2,895,003	1,907,495	15%
Spas	13,141	14,491	15,167	10,927	11%

*Note: FY2014 numbers are FY-YTD

Attraction Segmentation

Category Breakdown

11



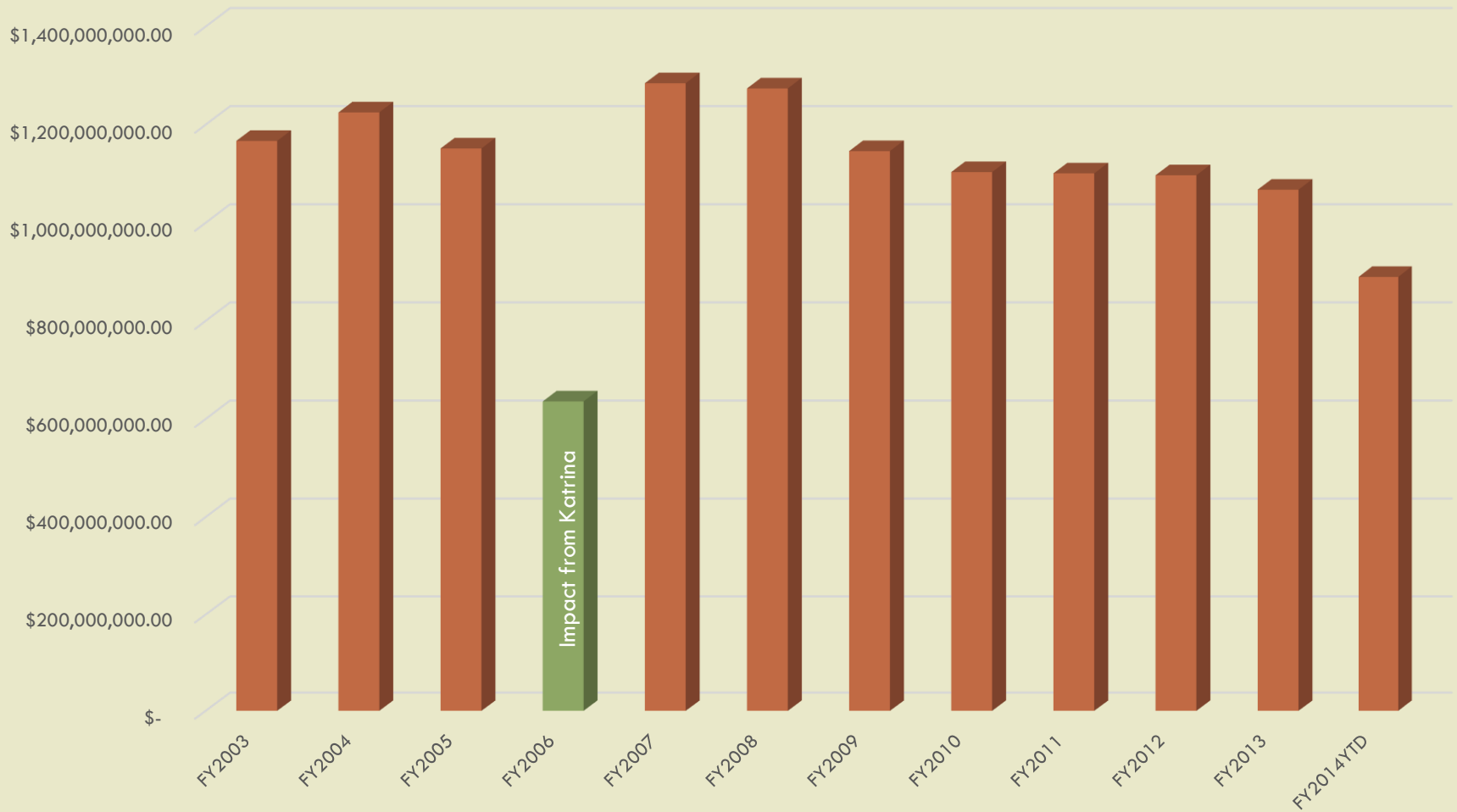
MSGC GAMING REVENUE

Gaming Revenue & Growth Rate:



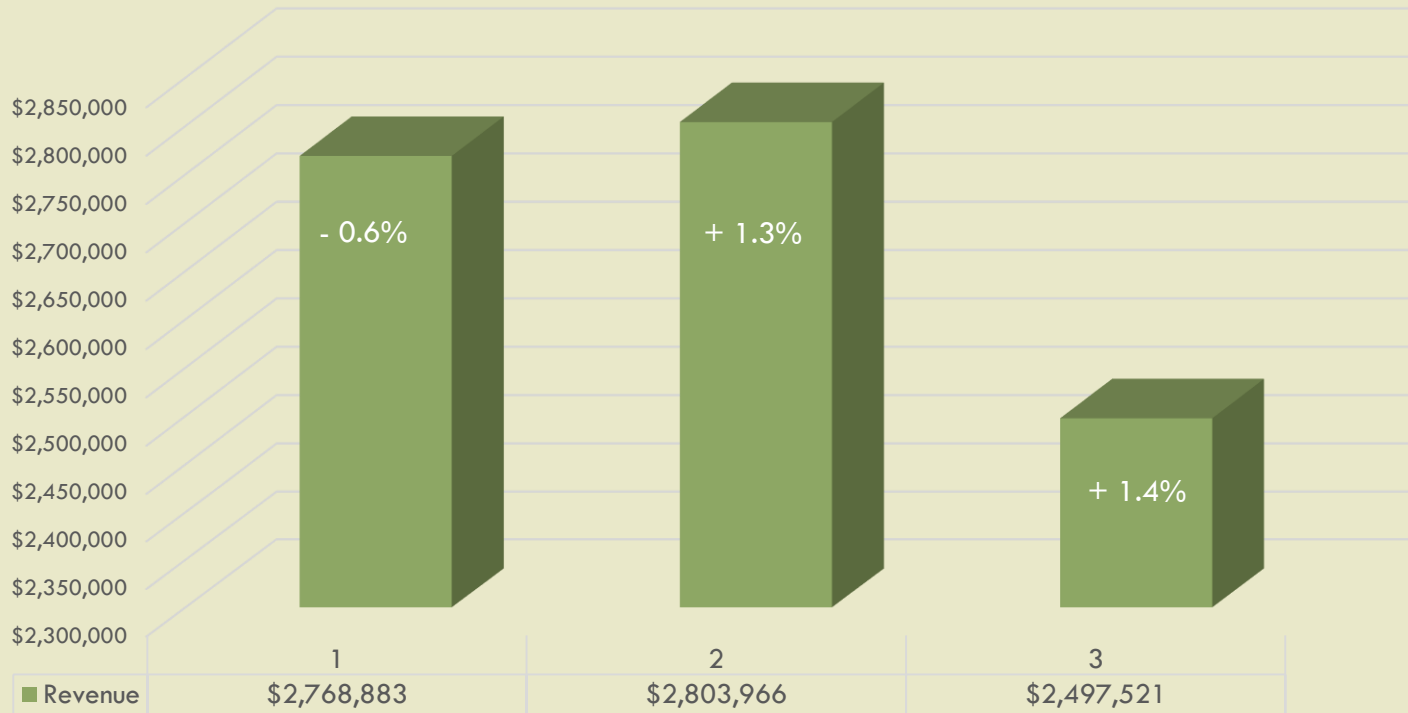
*Note: FY2014 numbers are FY-YTD

Gaming Revenue by FY



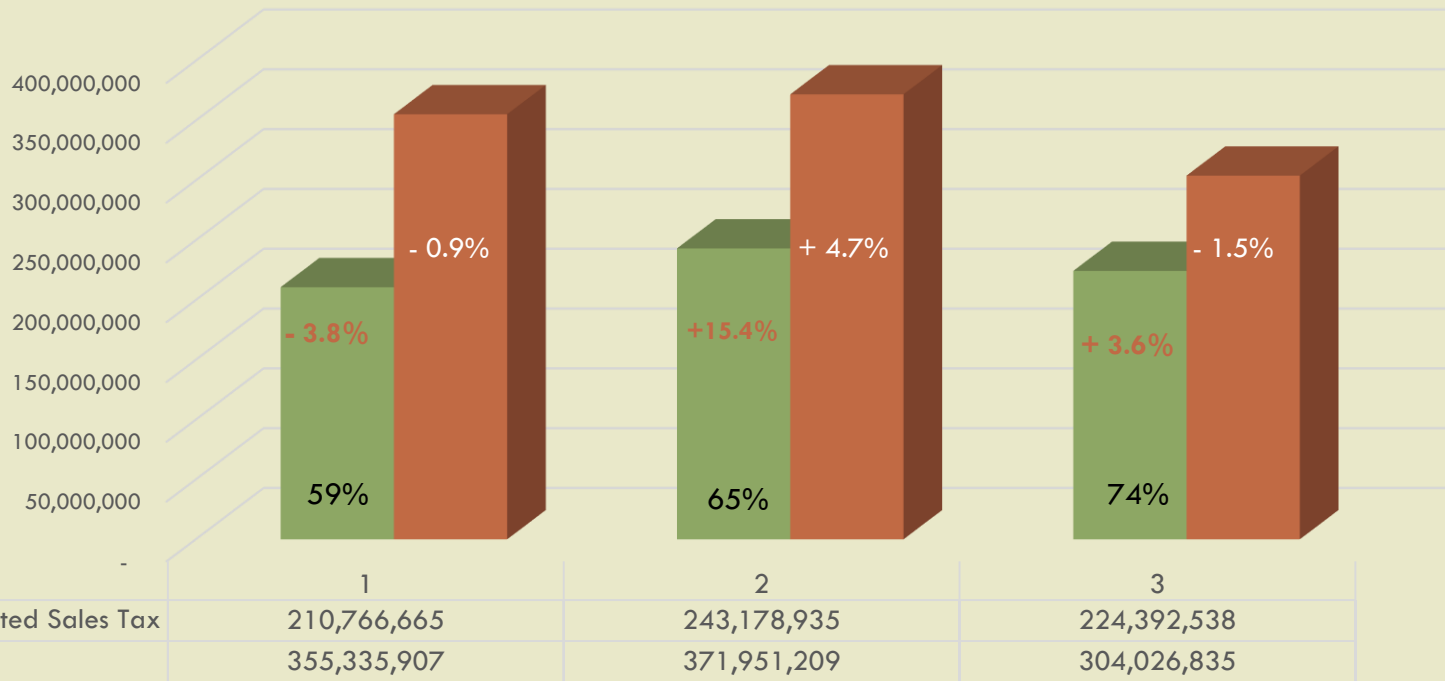
*Note: FY2014 numbers are FY-YTD

HOSPITALITY OCCUPANCY TAX



*Note: FY2014 numbers are FY-YTD

SALES TAX



*State reporting methodology changed in FY2013

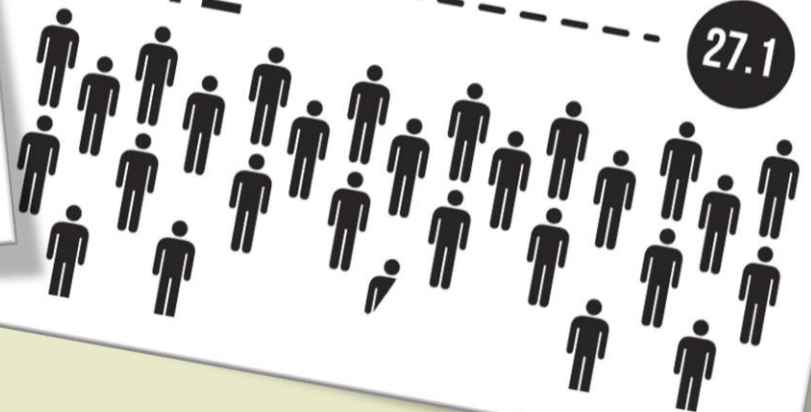
*Note: FY2014 numbers are FY-YTD

HOSPITALITY EMPLOYMENT

2013  = 1,000 EMPLOYEES **27.4**



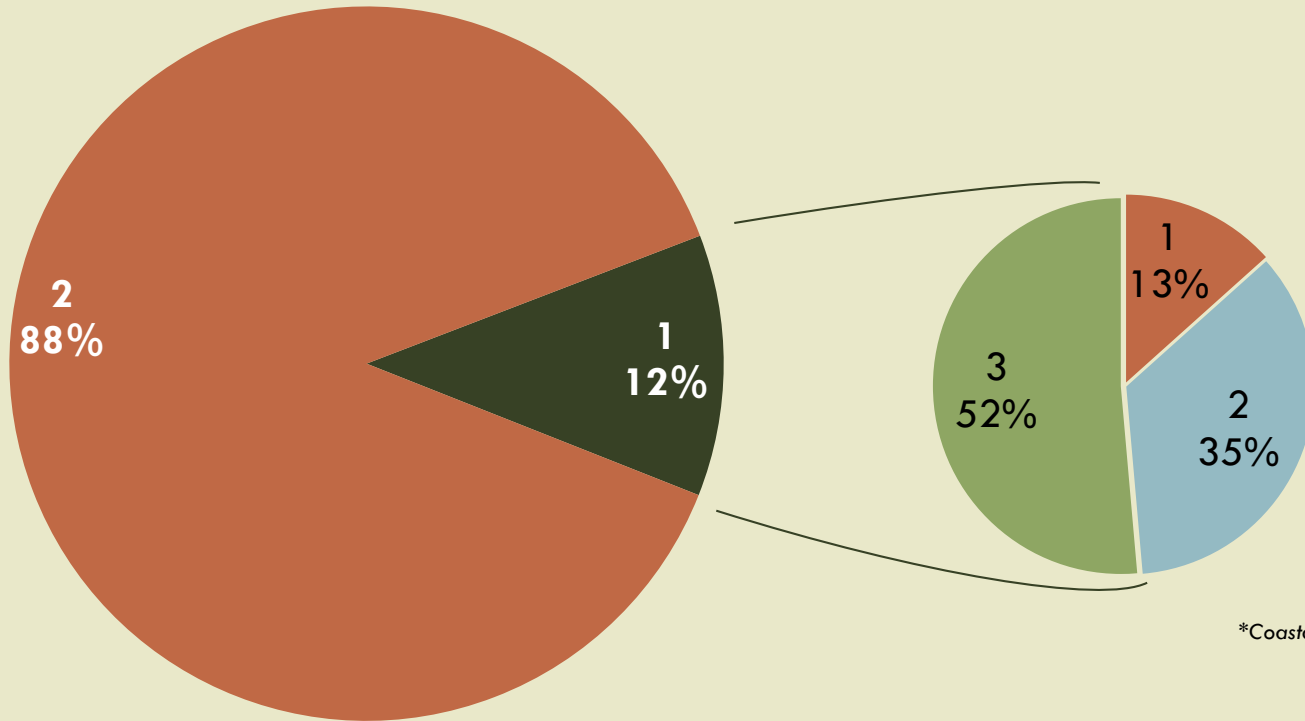
2012



17

COASTAL COUNTY HOUSEHOLDS

of Coastal County Households (2013): 172,207



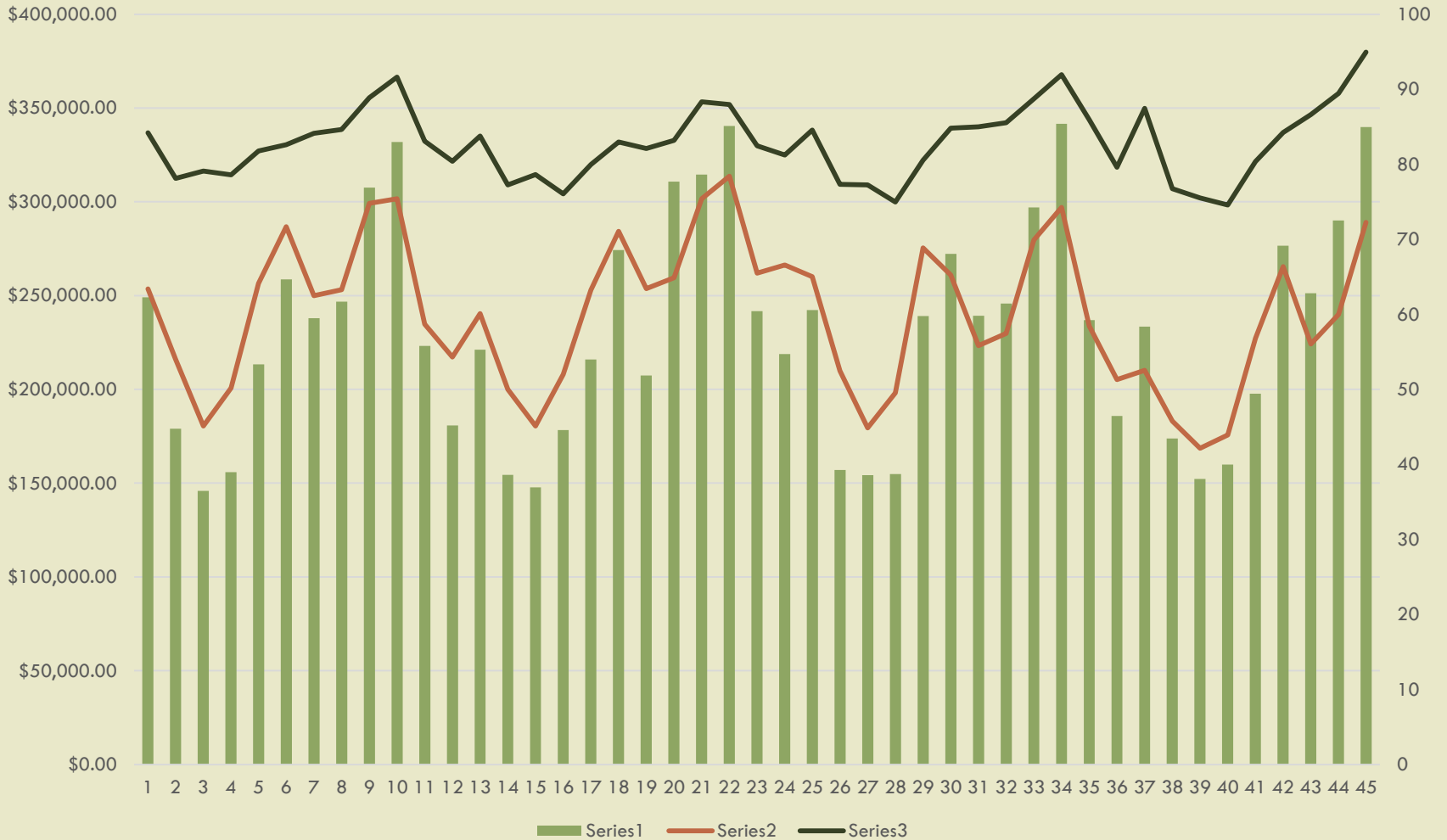
County	# Households
Hancock	23,021
Harrison	88,508
Jackson	60,678

*Coastal Counties include: Hancock, Harrison & Jackson County
Source: US Census Bureau

18

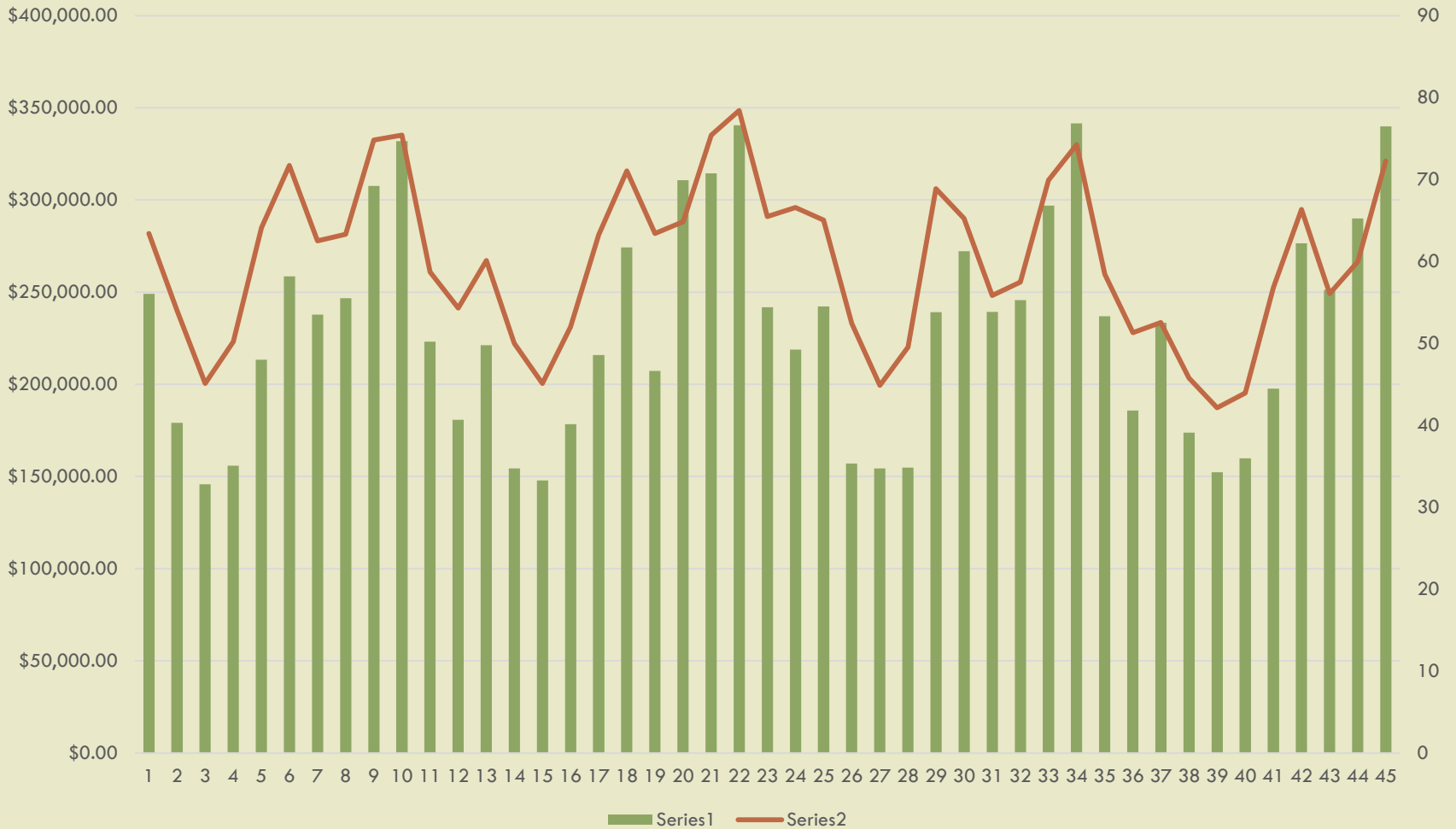
COMPARATIVE DATA

Hotel Occupancy Tax v. Occupancy Rate & ADR



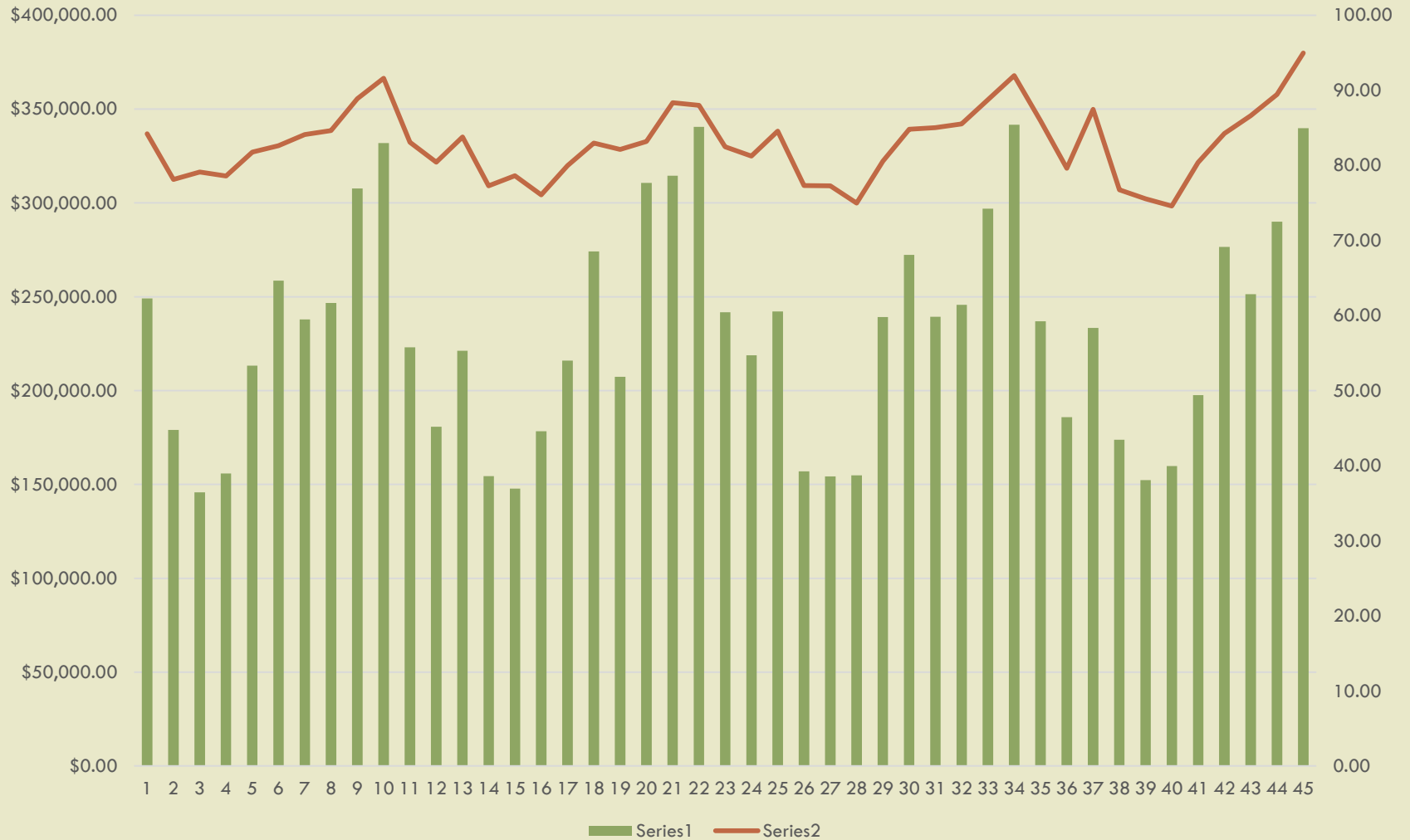
Hotel Occupancy Tax and Occupancy Rate

20

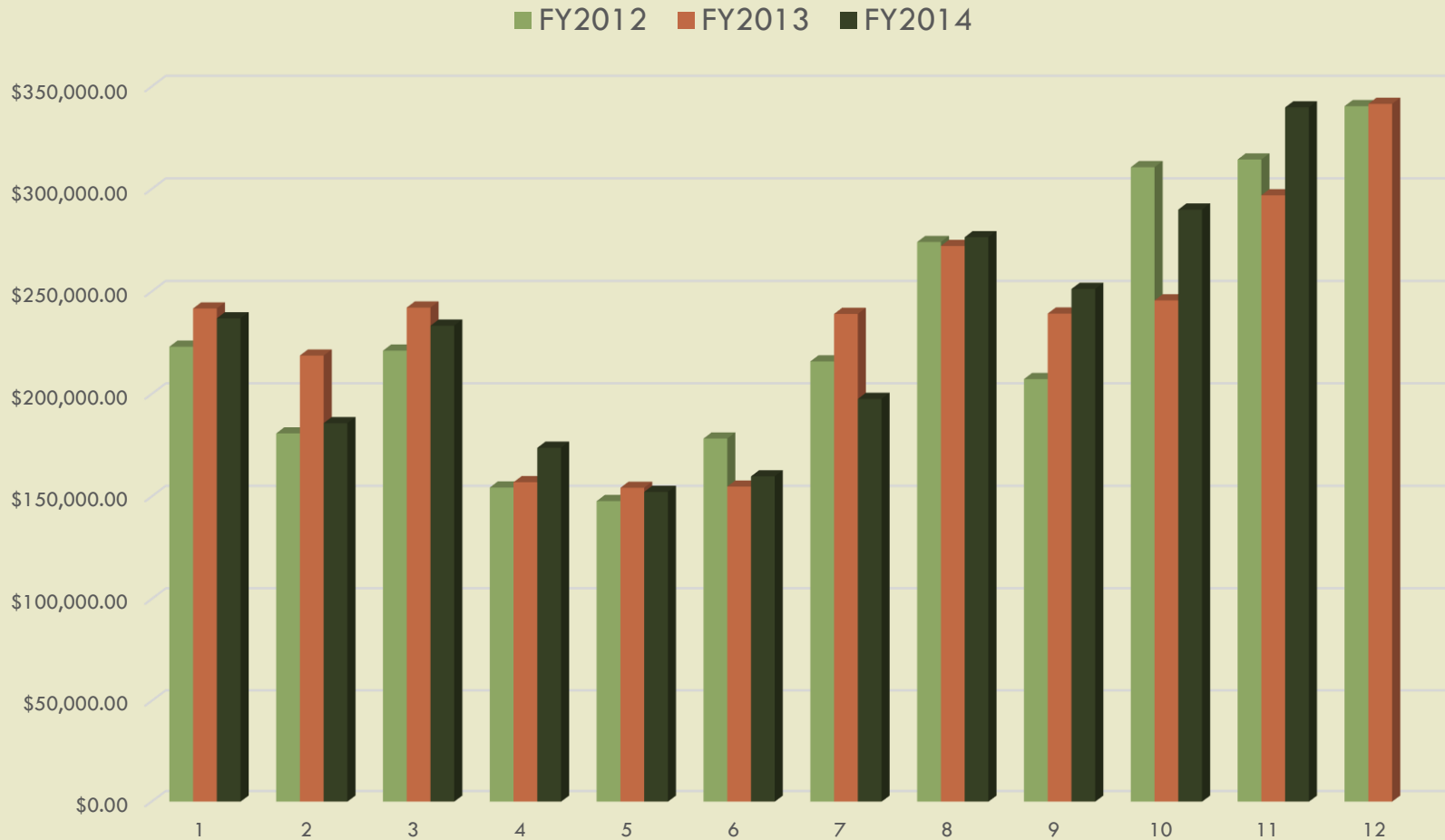


Hotel Occupancy Tax and ADR

21

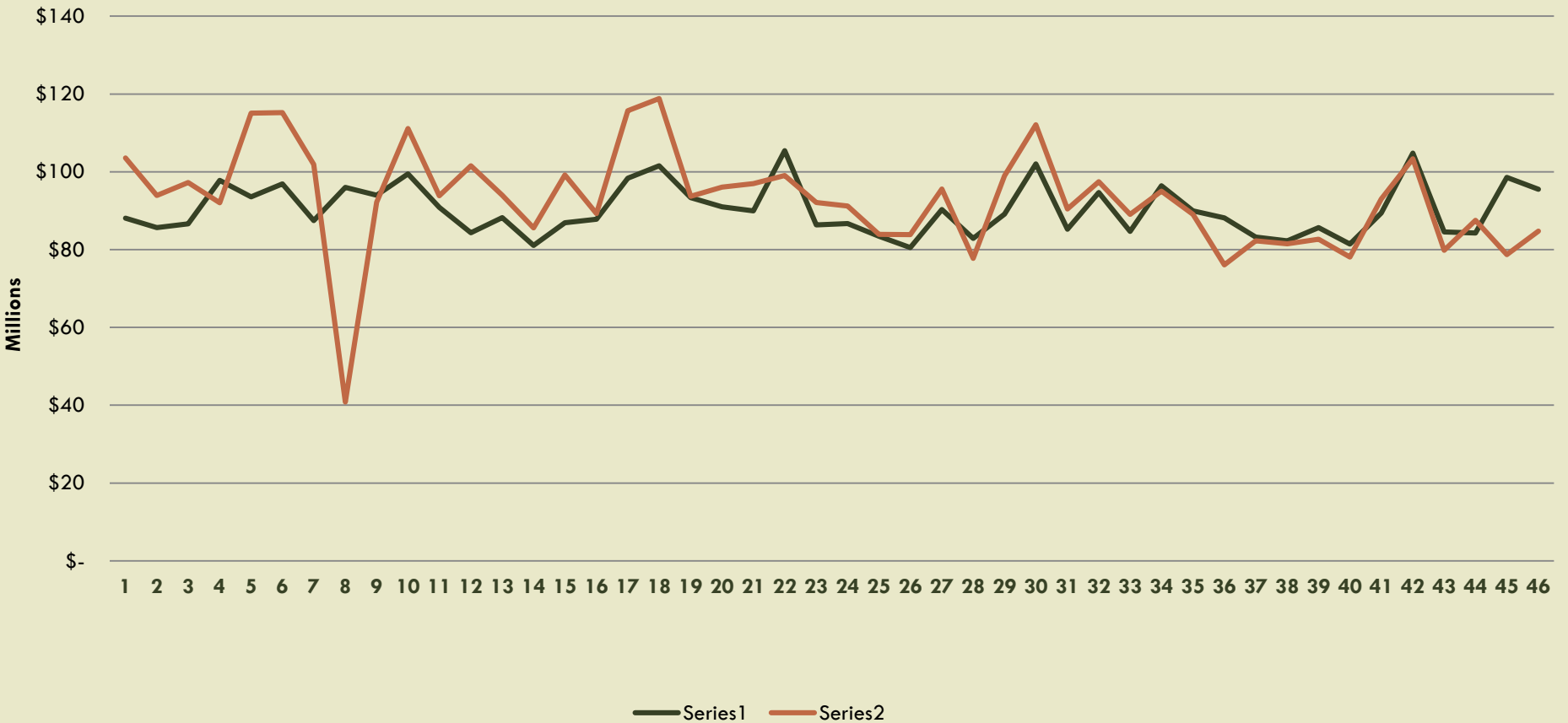


Hotel Occupancy Tax Month to Month



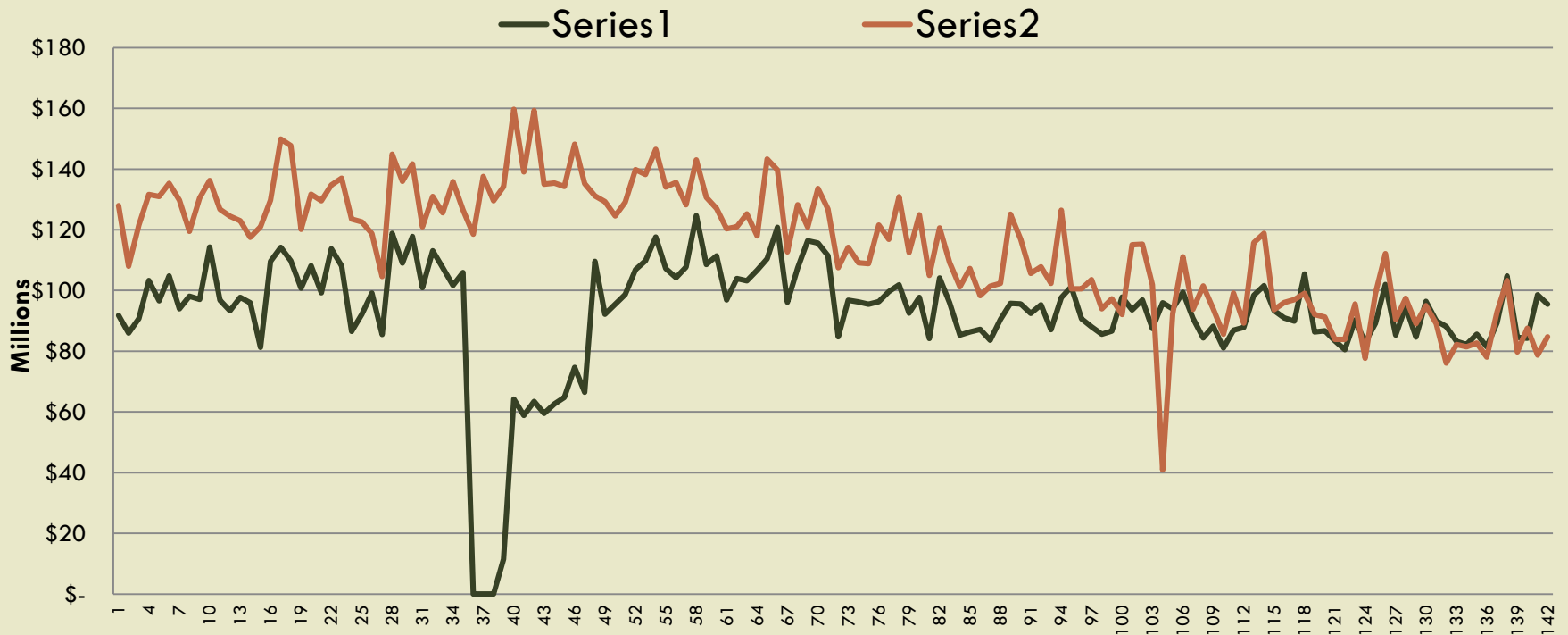
Gulf Coast vs. River Counties Gaming Revenue

23



*Note: FY2014 numbers are FY-YTD

GC vs. River Counties Long Term Gaming Revenue Trend



*Note: FY2014 numbers are FY-YTD