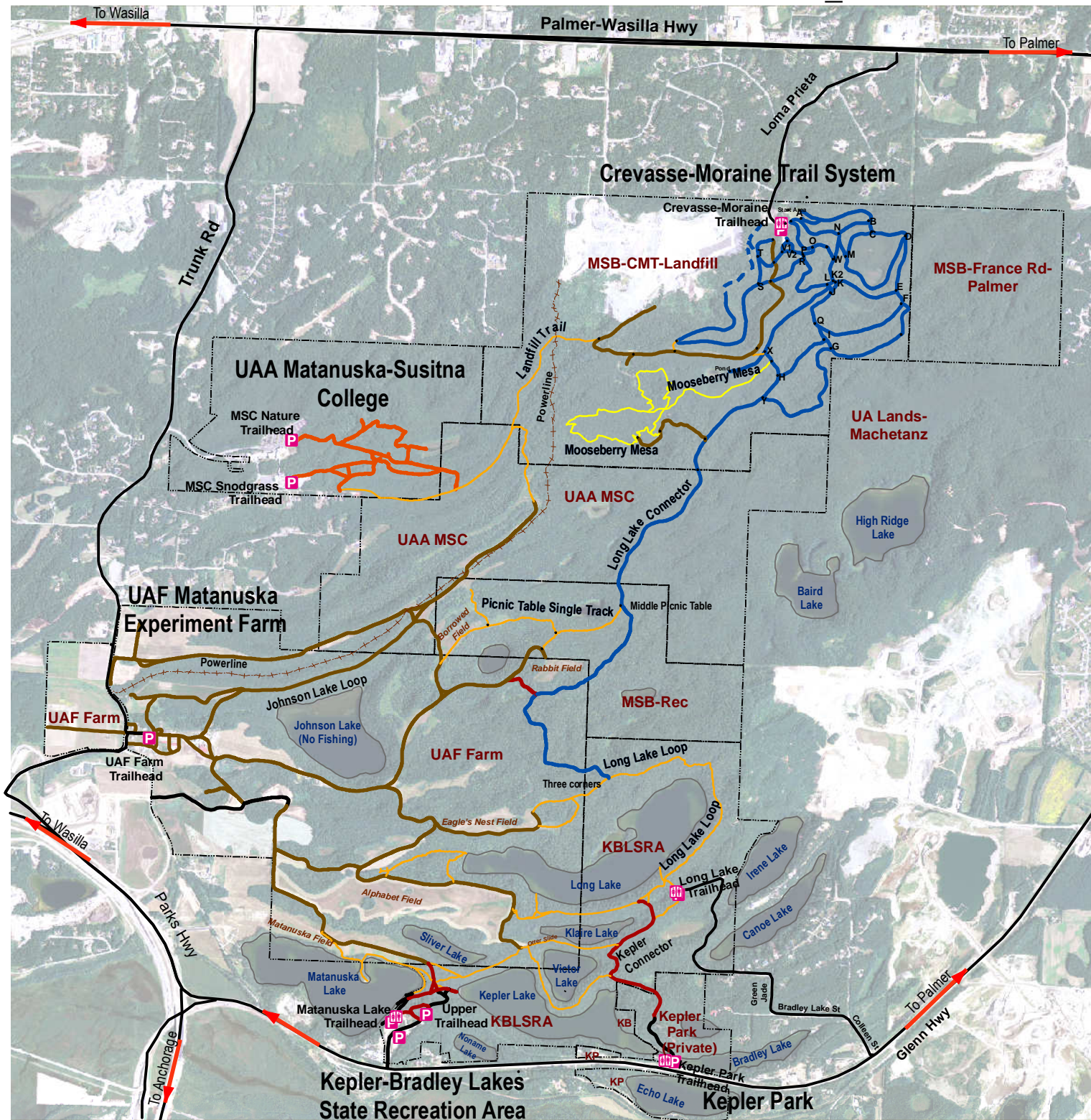


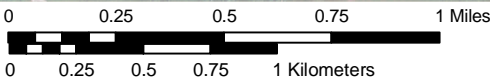
# Matanuska Greenbelt Trails 2009 - Draft 2.1\_user



## Legend

### Trail Tread

- Hardened-asphalt, gravel
- Dirt roads
- Groomable ski
- Wide track
- Wide track-no horses
- Single track
- Single track-no horses
- Lose to landfill 2009



Crevasse-Moraine Trail System (MSB-CMT-Landfill) - Turn south (left coming from Palmer, right coming from Wasilla) on Loma Prieta off Palmer-Wasilla Hwy (opposite Curves drive). Managed by Matanuska-Susitna Borough. MSB also manages recreational lands (MSB-Rec) surrounded by other properties. MSB-France Rd-Palmer is intended for CMT migration as Landfill moves to east. The dashed lines in northwest corner represent areas where the land fill is expected to move during 2009.

Kepler-Bradley Lakes State Recreation Area (KBSLRA) - turn north (left coming from Anchorage, right coming from Palmer) off Glenn Highway about 0.5 mi east of Glenn - Parks interchange. Managed by Alaska Division of Parks and Outdoor Recreation.

University of Alaska Anchorage Matanuska-Susitna College (UAA-MSC) - access parking lots off Trunk Road. Please respect the privilege of being able to access their nature and other trails. Horses are not allowed.

University of Alaska Fairbanks Matanuska Experiment Farm (UAF Farm) - Active research farm. Please respect their fields and on-going research. Be aware that authorized mechanized farm equipment may be in the area as well as pesticide applications. The area is non-motorized for general public. Please respect the privilege of using these areas and stay on trails.

Kepler Park is a private park in southeast corner of greenbelt that encourages non-motorized access. Please check signs at trailhead for more details on access.

Not for navigation or legal purposes.