

Palmer-Moose Creek Railroad Trail

Non-Motorized year-round trail

- Tread:** Gravel and rock surface, 4 - 8' wide
Length: 6.1 miles (9.8 kilometers) one-way
Difficulty: Easy to moderate
Activity: Summer - hiking, mountain biking, horseback riding
Winter - mountain biking, cross-country skiing and skijoring
Trailhead: Street side parking in Palmer, or large parking area at Moose Creek
Manager: MSB Parks and Outdoor Recreation Division (Phone 745-9690)
Volunteer Trail Care Crew: Valley Mountain Bike Association Representative - Mark Gronwald

How to get there

The Palmer-Moose Creek Railroad Trail can be accessed in two locations, from Eagle Street in Palmer and from the Moose Creek State Recreation Wayside on the Glenn Highway.

1) Access to the trail from Palmer - go east on the Glenn Highway, take a right on Eagle Street, follow Eagle Street east for 6 blocks, the trail begins near the intersection with Denali Street. Parking is along the street.

2) Access from Moose Creek - from Palmer, go east 6 miles on the Glenn Highway to the Moose Creek State Recreation Wayside on the north side of the highway. Parking is available in the wayside. Cross the highway, follow the creek side trail to the old railroad bed and trail.

General description

The Palmer-Moose Creek Railroad Trail is a year round non-motorized trail following an old railroad bed located adjacent to the Matanuska River between Palmer and Moose Creek.

The trail is mostly level, the first half passing beneath towering bluffs on the north side of the river. Travel can sometimes be pebbles

tumble down large embankments. The trail has been washed out in recent years due to landslides and has had to be repaired several times.

The second half of the trail (from the Palmer side) is more stable, passing through large stands of cottonwood, birch and spruce. The trail provides views of the Matanuska River and the Chugach Mountain range to the south.

The railroad bed once continued all the way to Chickaloon, but was washed out near Moose Creek. The hiker or biker can exit the trail at Moose Creek by following the creek up to the highway, or return to Palmer along the same route.

Trail uses

The Palmer-Moose Creek Railroad Trail is maintained by volunteers. It is designated for non-motorized uses only. Summer use includes hiking, mountain biking and horse back riding. Winter uses include mountain biking, cross-country skiing and skijoring.

***Take note**

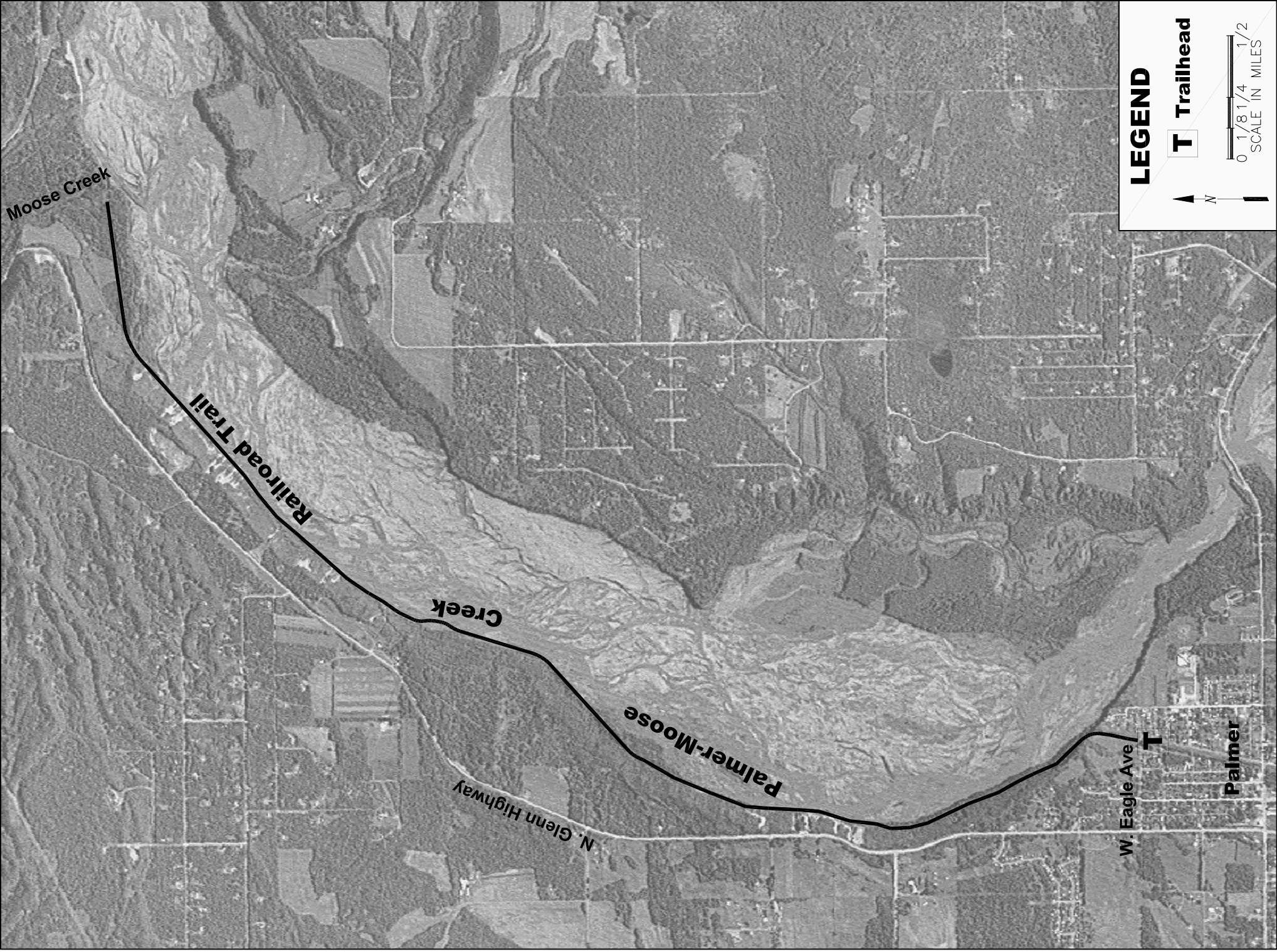
Dogs must be on leash and under your control.

Palmer-Moose Creek Railroad Trail



**Matanuska Susitna Borough
Community Development Department
350 E. Dahlia Avenue
Palmer, Alaska 99645**

**(907) 745-9578
www.matsugov.us**



Moose Creek

Railroad Trail

Creek

Palmer-Moose

N. Glenn Highway

W. Eagle Ave

Palmer

LEGEND

T Trailhead

