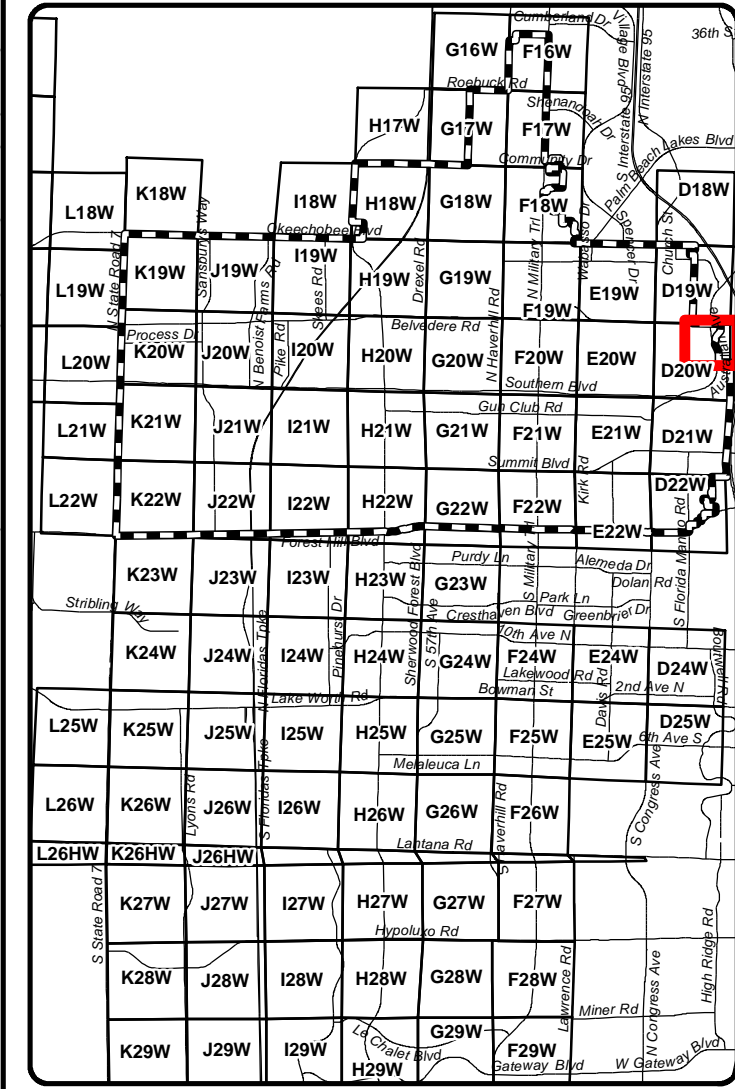


P.B.C.W.U.D. Water Distribution Map Map Grid: **D20NE**

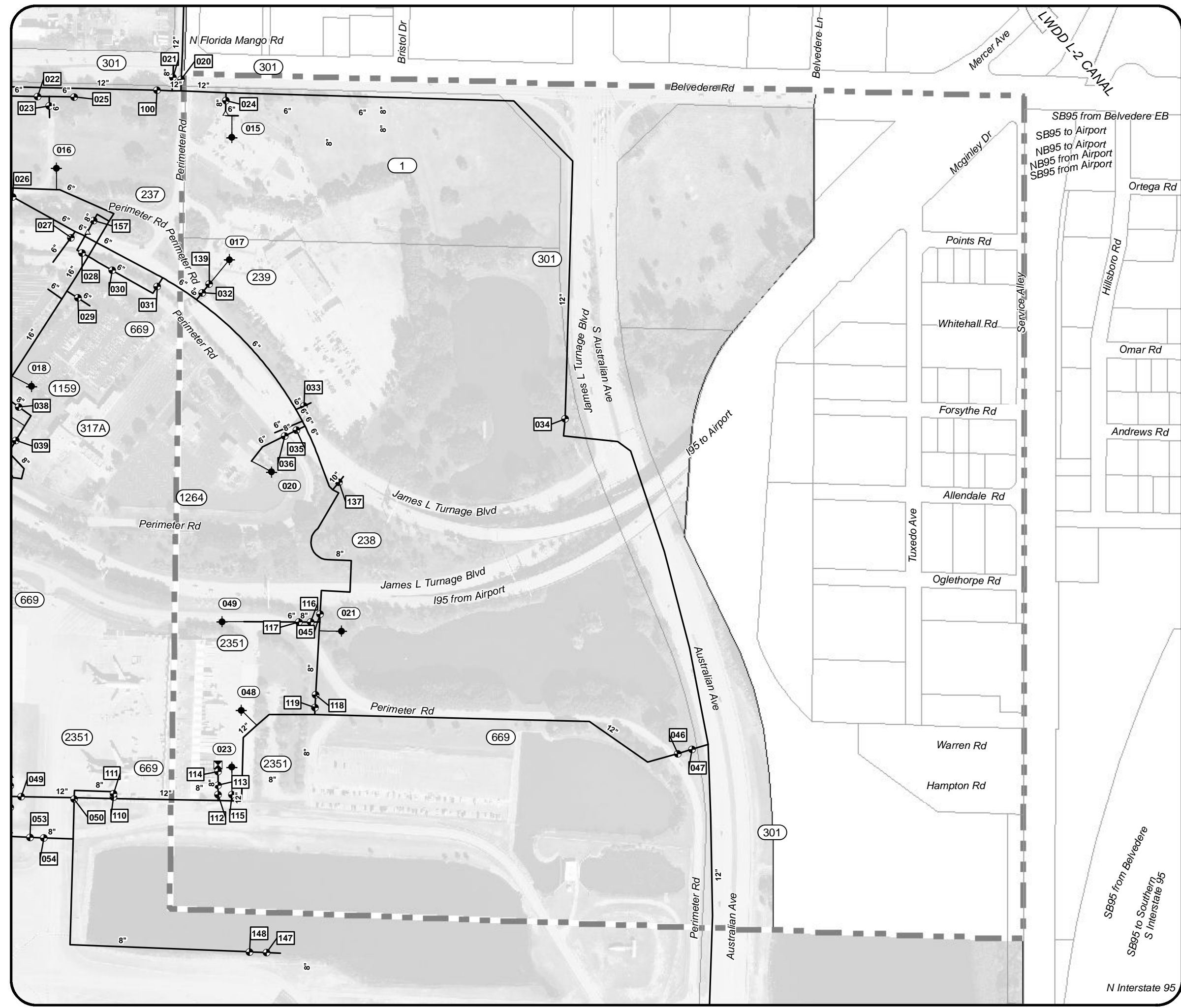
Legend

As-Built No.	Valve Public
Hydrant No.	Valve Private
Valve No.	Air Release Valve
A.R.V. No.	Back Flow Valve
W.M. Public	Reducer
W.M. Private	Meter
Hydrant Line	Display Grid
Fire Line	Parcels
Hydrant Public	Canals
Hydrant Private	Not PBCWUDSA (No Aerial)

Zone 1 - Location Map



RangeTownshipSection: **434332**

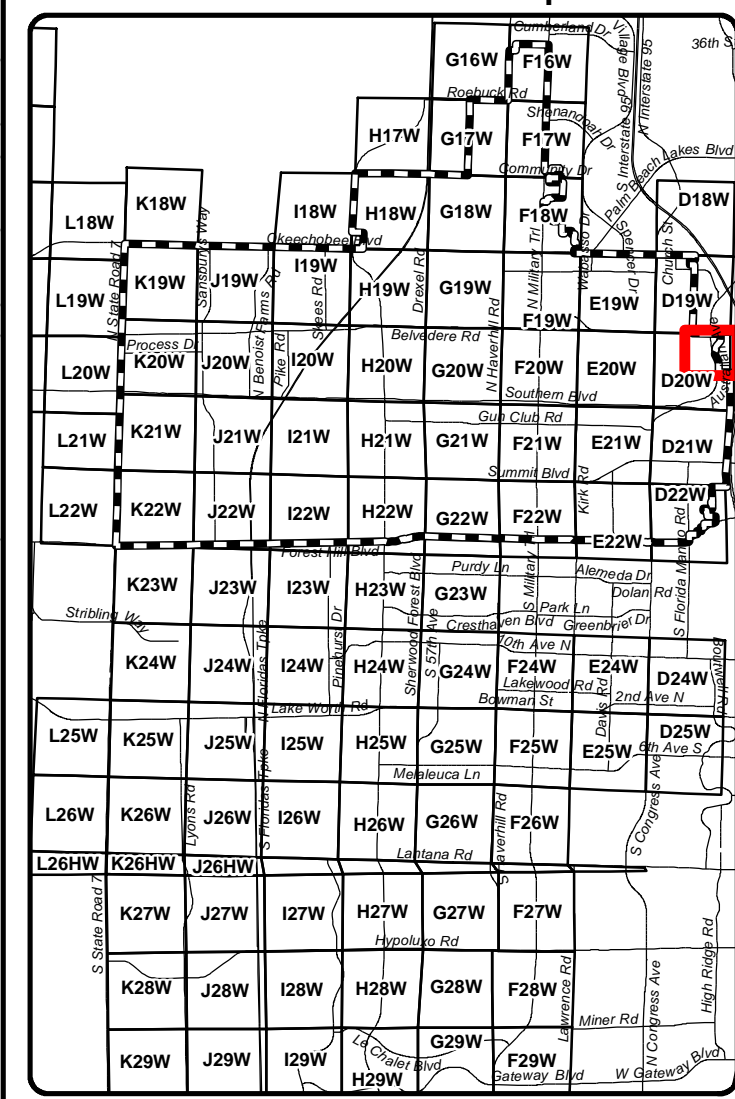


P.B.C.W.U.D. Wastewater Collection Map Map Grid: D20NES

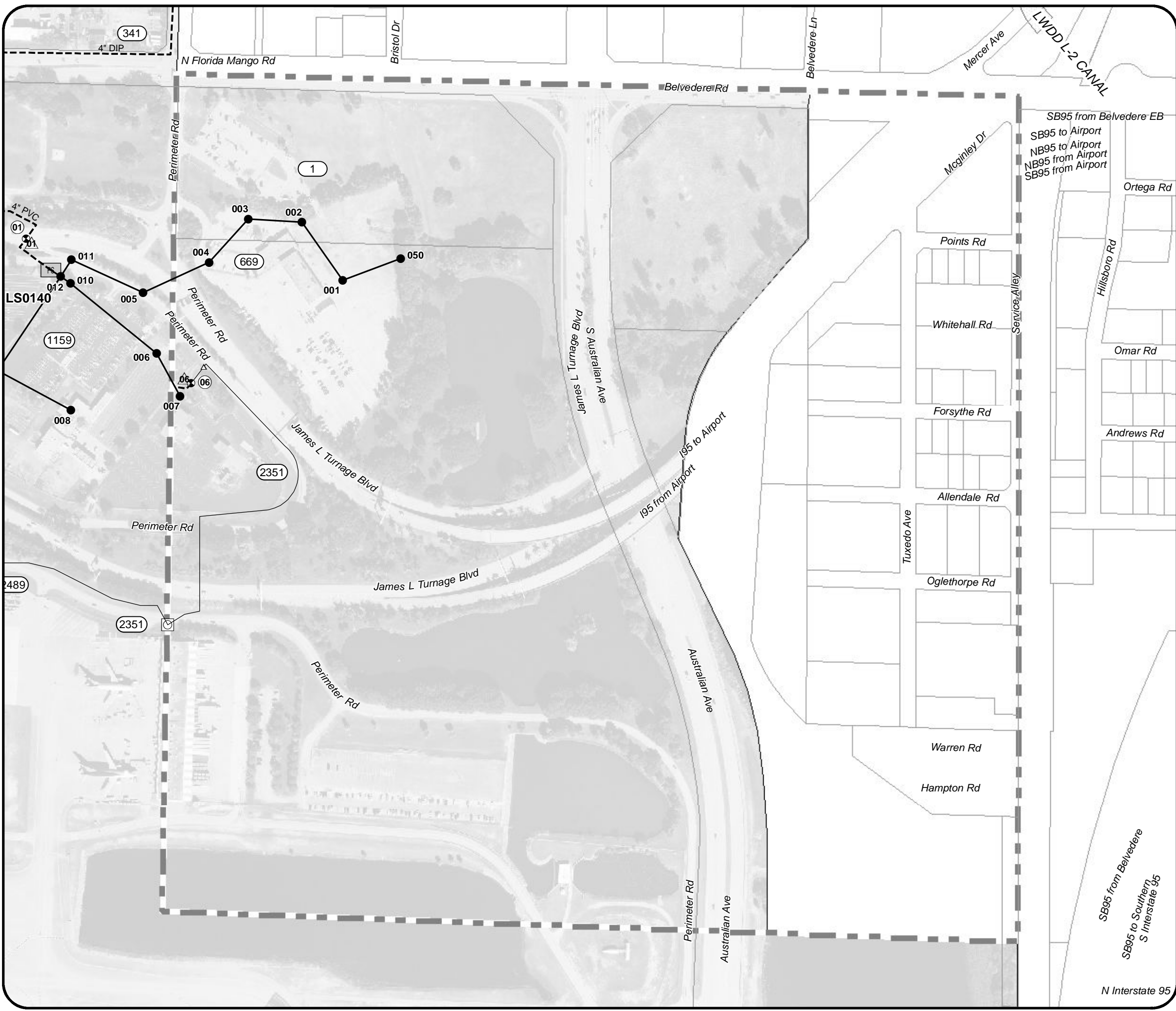
Legend

As-Built No.	Valve Public
Manhole No.	Valve Private
Valve No.	AirRelease Valve
A.R.V. No.	Reducer
F.M. Public	L.S. Public
F.M. Private	L.S. Private
G.M. Public	Display Grid
G.M. Private	Parcels
Manhole Public	Canals
Manhole Private	Not PBCWUDSA (No Aerial)

Zone 1 - Location Map



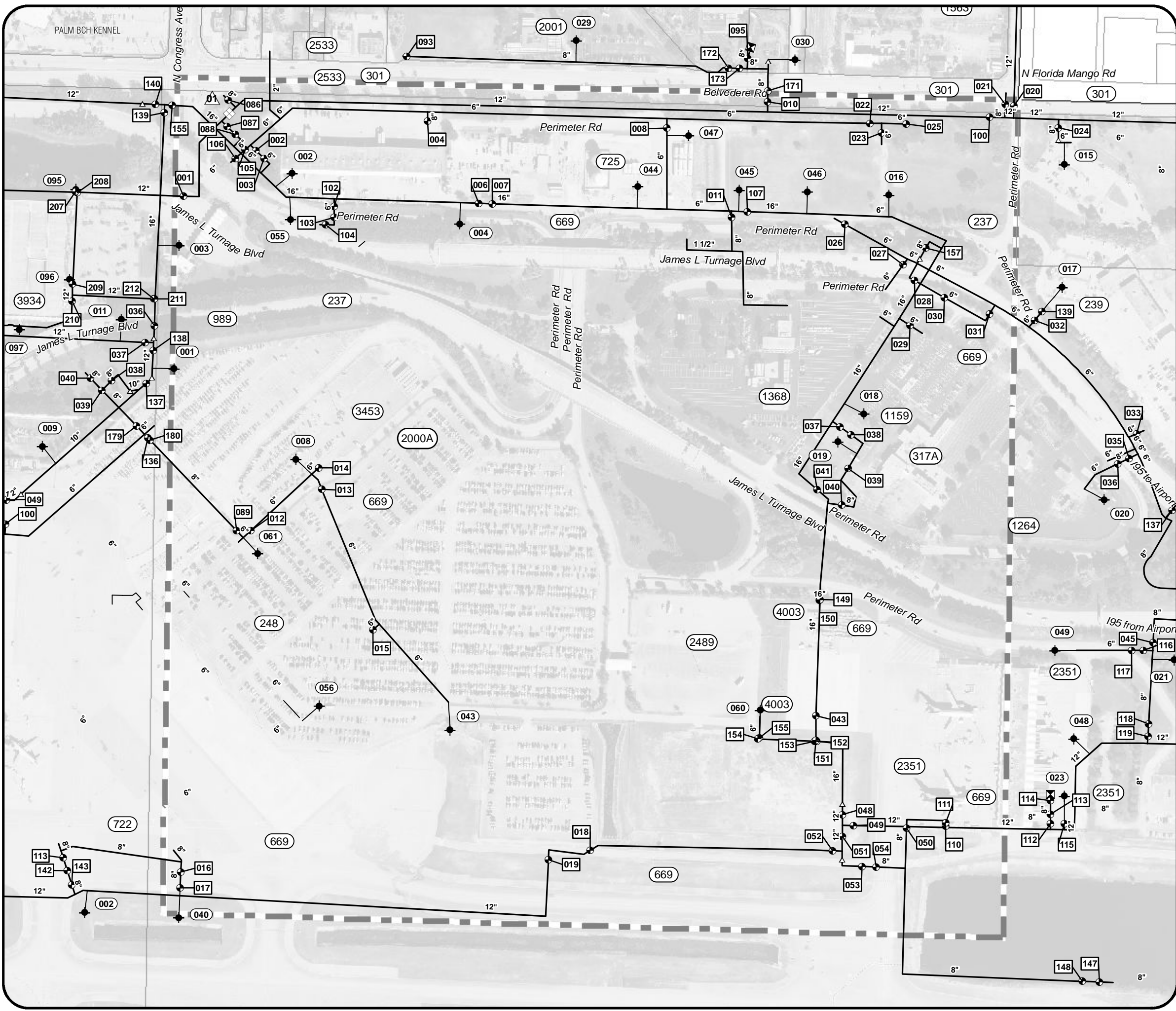
RangeTownshipSection: **434332**



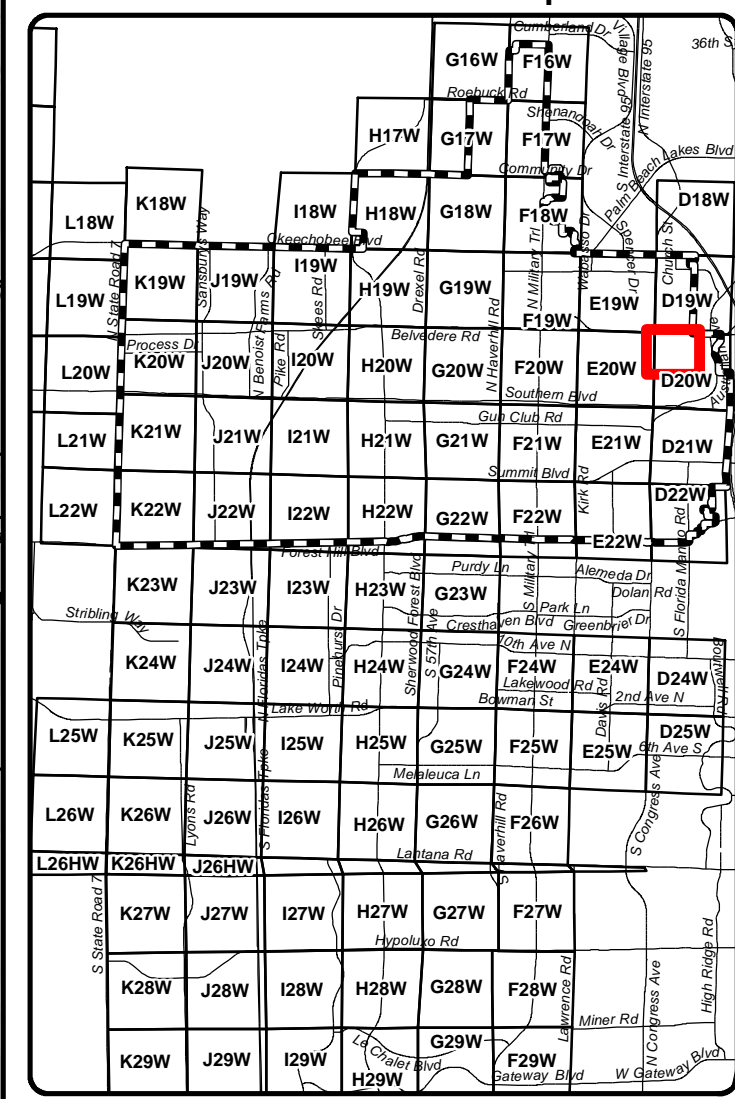
P.B.C.W.U.D. Water Distribution Map Map Grid: D20NW

Legend

As-Built No.	Valve Public
Hydrant No.	Valve Private
Valve No.	Air Release Valve
A.R.V. No.	Back Flow Valve
W.M. Public	Reducer
W.M. Private	Meter
Hydrant Line	Display Grid
Fire Line	Parcels
Hydrant Public	Canals
Hydrant Private	Not PBCWUDSA (No Aerial)



Zone 1 - Location Map



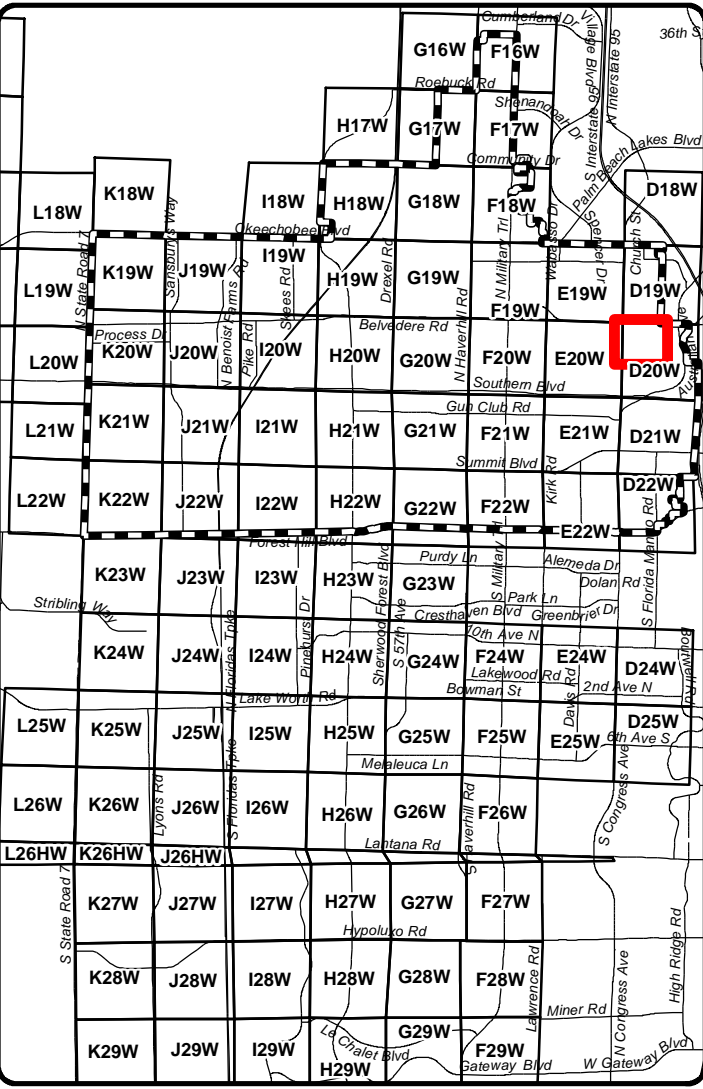
RangeTownshipSection: **434332**

P.B.C.W.U.D. Wastewater Collection Map Map Grid: **D20NWS**

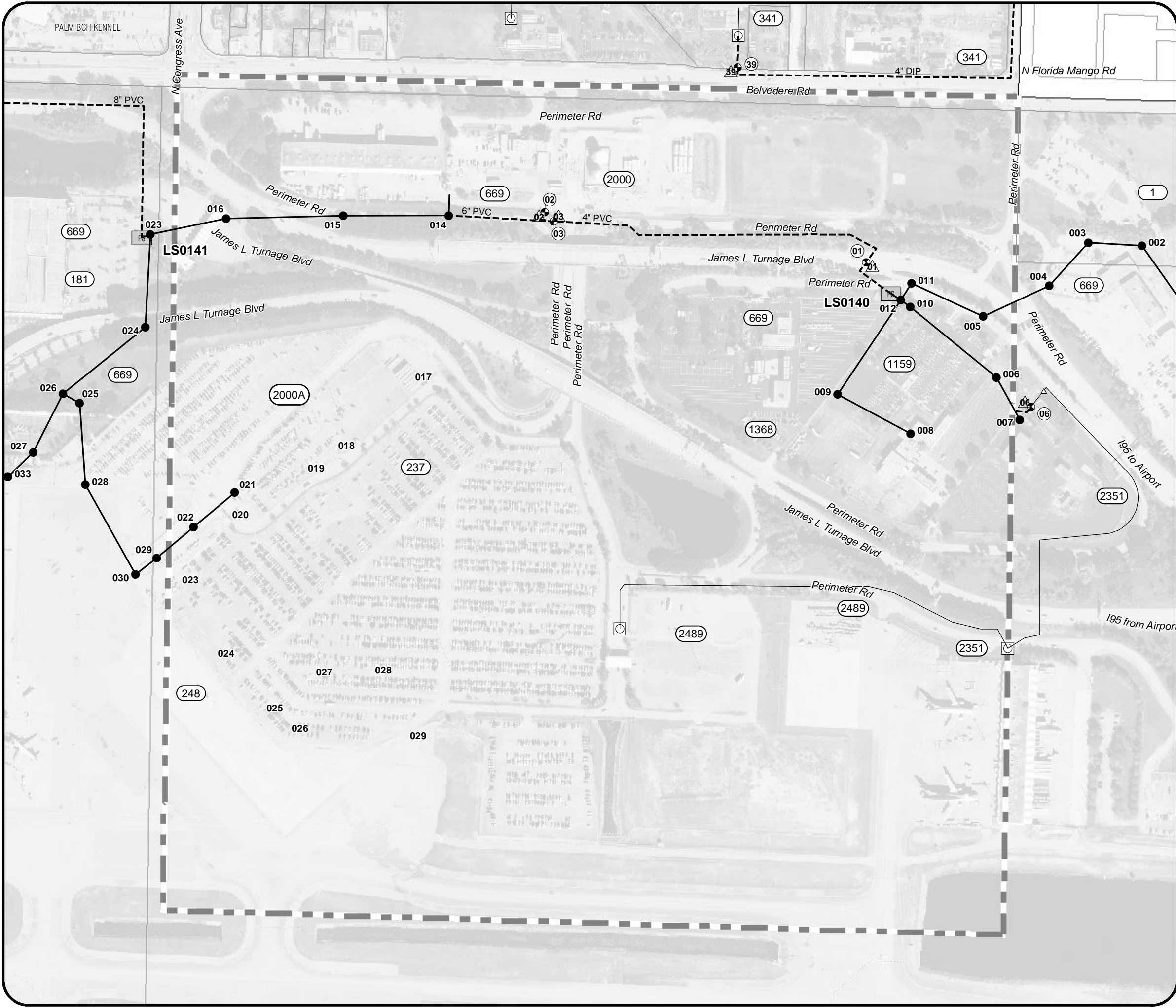
Legend

As-Built No.	Valve Public
Manhole No.	Valve Private
Valve No.	AirRelease Valve
A.R.V. No.	Reducer
F.M. Public	L.S. Public
F.M. Private	L.S. Private
G.M. Public	Display Grid
G.M. Private	Parcels
Manhole Public	Canals
Manhole Private	Not PBCWUDSA (No Aerial)

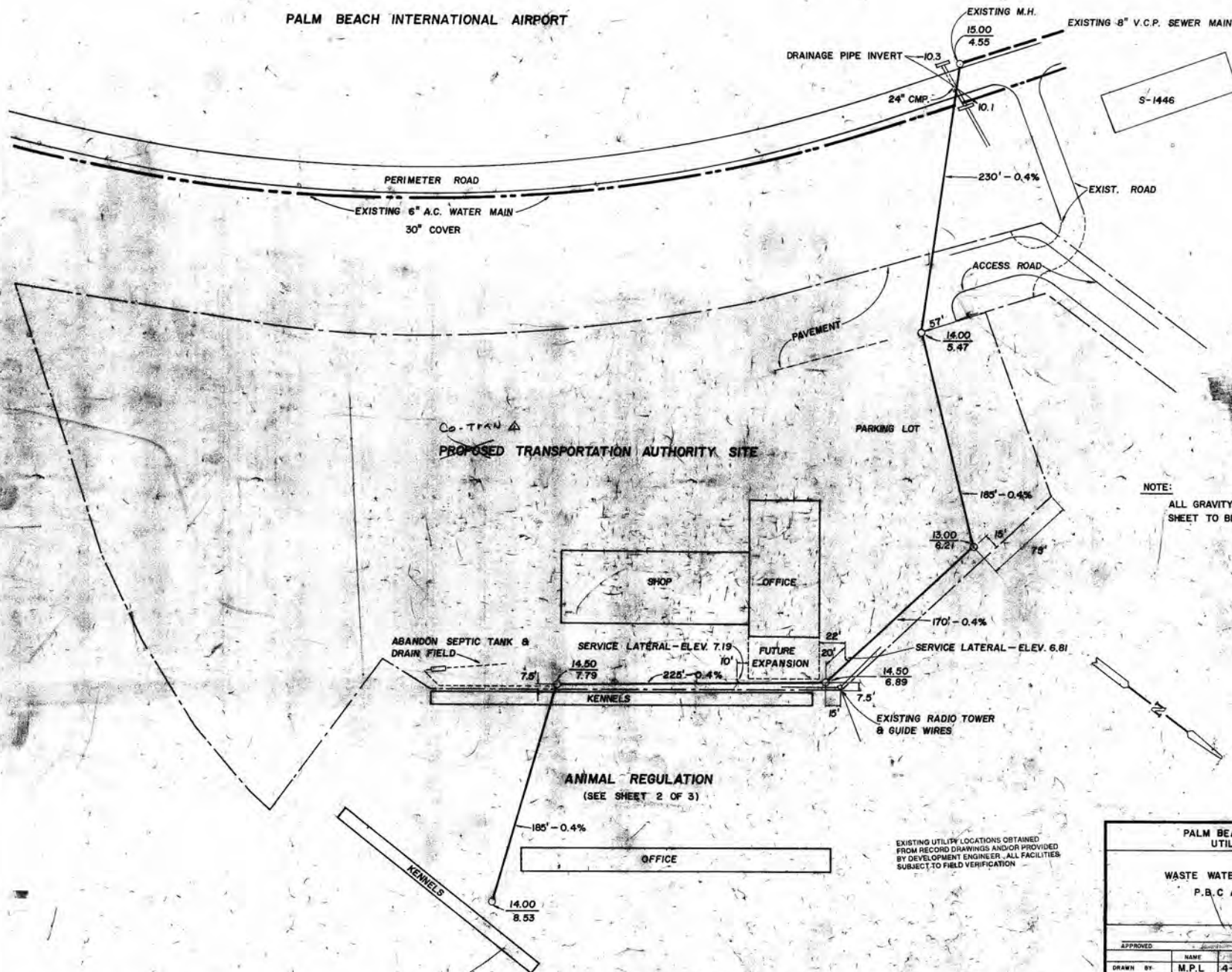
Zone 1 - Location Map



RangeTownshipSection: **434332**



PALM BEACH INTERNATIONAL AIRPORT

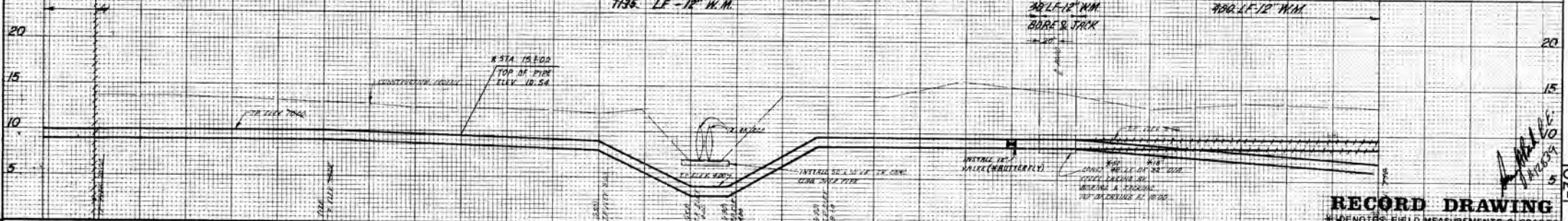
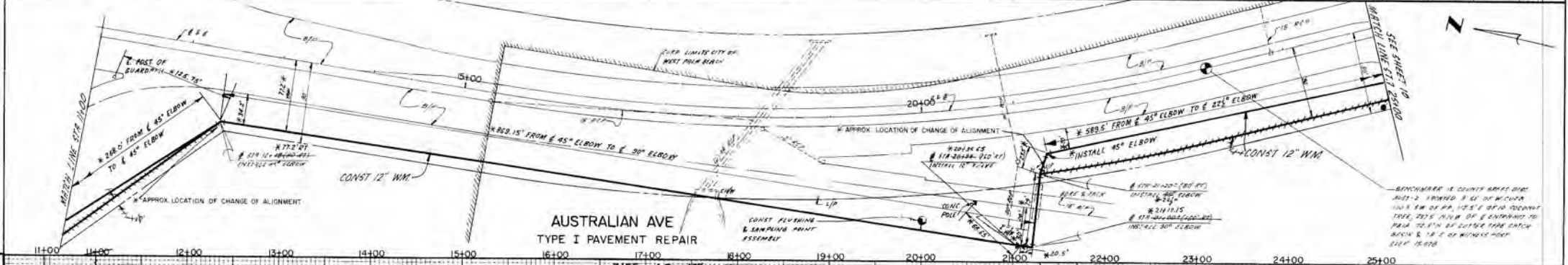
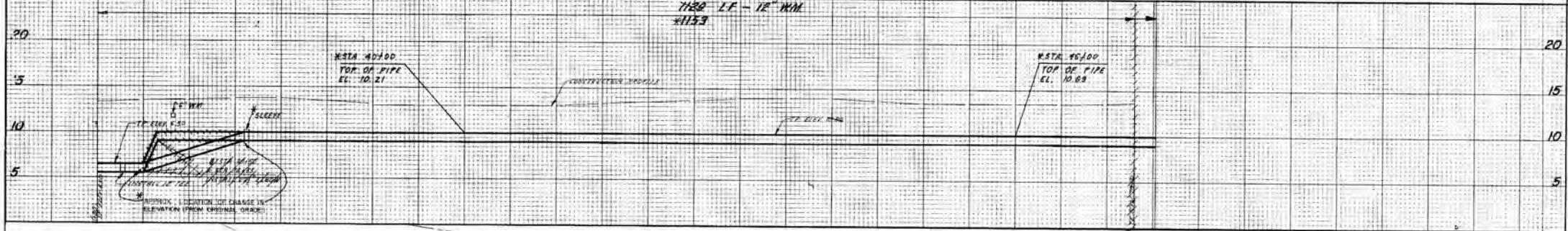
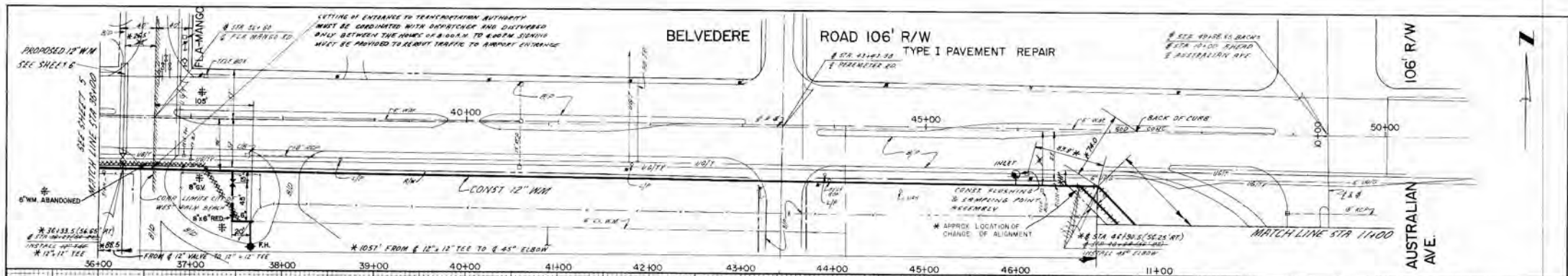


NOTE:
ALL GRAVITY SEWER MAINS THIS SHEET TO BE 6" V.C. PIPE

EXISTING UTILITY LOCATIONS OBTAINED FROM RECORD DRAWINGS AND/OR PROVIDED BY DEVELOPMENT ENGINEER. ALL FACILITIES SUBJECT TO FIELD VERIFICATION

PALM BEACH COUNTY, FLORIDA UTILITIES DIVISION			
WASTE WATER COLLECTION SYSTEM P.B.C ANIMAL REGULATION			
APPROVED	NAME	DATE	SCALE
	M.P.L.	4-12-76	1" = 40'-0"
DRAWN BY	M.P.L.	4-12-76	PROJECT NO.
CHECKED BY			76-U-003
SHEET		OF 3 SHEETS	

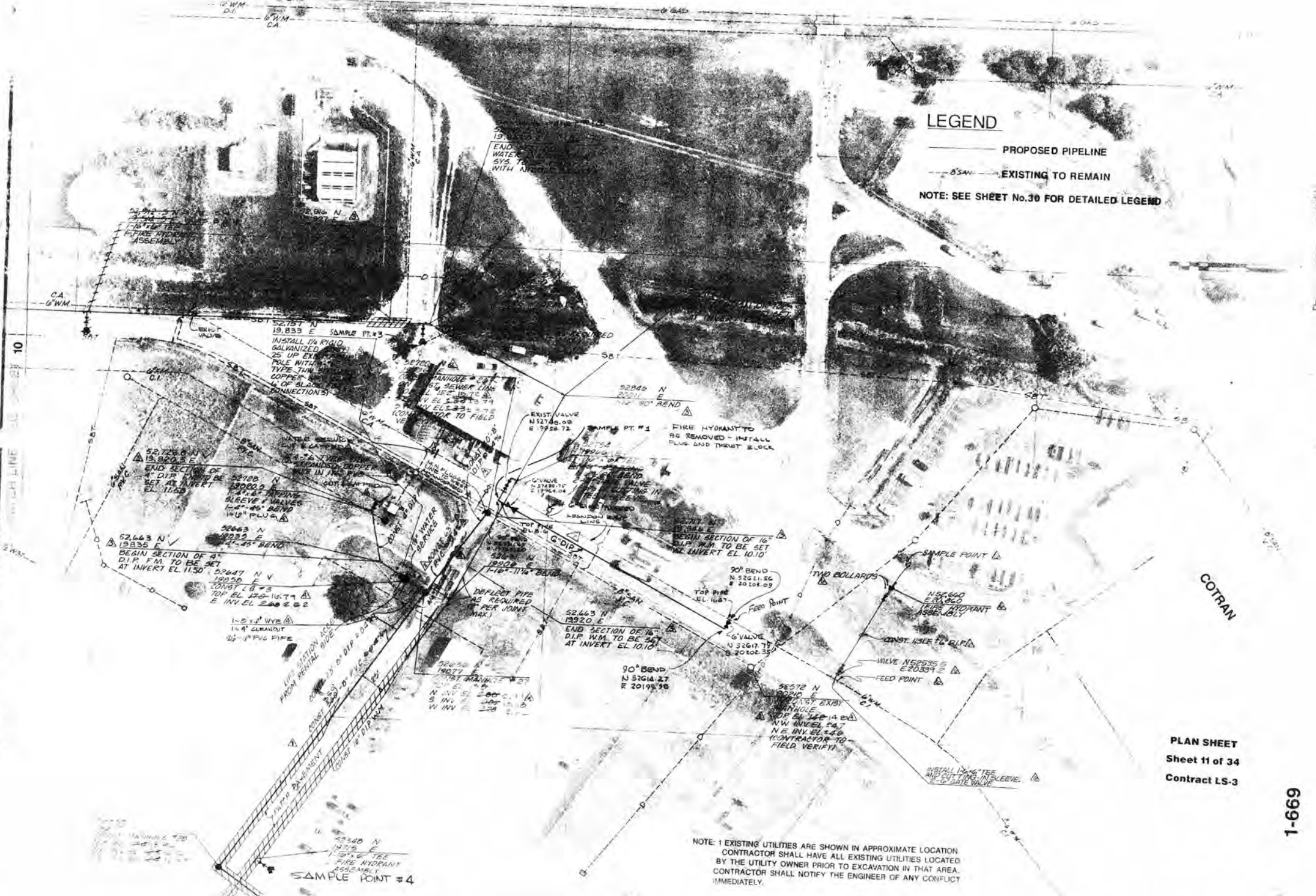
Cal Tran Site 06/00 d.c.r.



RUSSELL & AXON, INCORPORATED ENGINEERS DELRAY BEACH, FLORIDA Approved: <i>[Signature]</i>	BARKER, OSHA & ANDERSON, INC. CONSULTING ENGINEERS, NORTH PALM BEACH, FLORIDA Approved: <i>[Signature]</i>	PALM BEACH COUNTY, FLORIDA Approved: <i>[Signature]</i> ADMINISTRATOR, UTILITIES SERVICES DEPT.	DESIGNED: JW DRAWN: MP CHECKED: S.B./P.S.	PLAN & PROFILE WATER MAIN EXTENSIONS SYSTEM NO. 1 PALM BEACH COUNTY, FLORIDA	DATE: FEB. 1978 SCALE: VERT. 1"=5' FILE NO.: 7-9204-061 SHEET NO.: 9 OF 20 SHEETS														
			<table border="1"> <tr> <th>NO.</th> <th>DESCRIPTION</th> <th>DATE</th> </tr> <tr> <td>1/18</td> <td>ADDED RECORD DWS INFO</td> <td>MP</td> </tr> <tr> <td>1/21/81</td> <td>ADDED RECORD DWS INFO</td> <td>MP</td> </tr> <tr> <td>5/18</td> <td>ADDED RECORD DWS</td> <td>MP</td> </tr> <tr> <td>1/18</td> <td>ADDED TYPE I PAVEMENT REPAIR</td> <td>CJT/TO</td> </tr> <tr> <td>3/15</td> <td>ROBBER VALVE</td> <td>CJT/MP</td> </tr> </table>	NO.	DESCRIPTION	DATE	1/18	ADDED RECORD DWS INFO	MP	1/21/81	ADDED RECORD DWS INFO	MP	5/18	ADDED RECORD DWS	MP	1/18	ADDED TYPE I PAVEMENT REPAIR	CJT/TO	3/15
NO.	DESCRIPTION	DATE																	
1/18	ADDED RECORD DWS INFO	MP																	
1/21/81	ADDED RECORD DWS INFO	MP																	
5/18	ADDED RECORD DWS	MP																	
1/18	ADDED TYPE I PAVEMENT REPAIR	CJT/TO																	
3/15	ROBBER VALVE	CJT/MP																	

LEGEND

- PROPOSED PIPELINE
 - - - EXISTING TO REMAIN
- NOTE: SEE SHEET No.30 FOR DETAILED LEGEND



PLAN SHEET
 Sheet 11 of 34
 Contract LS-3

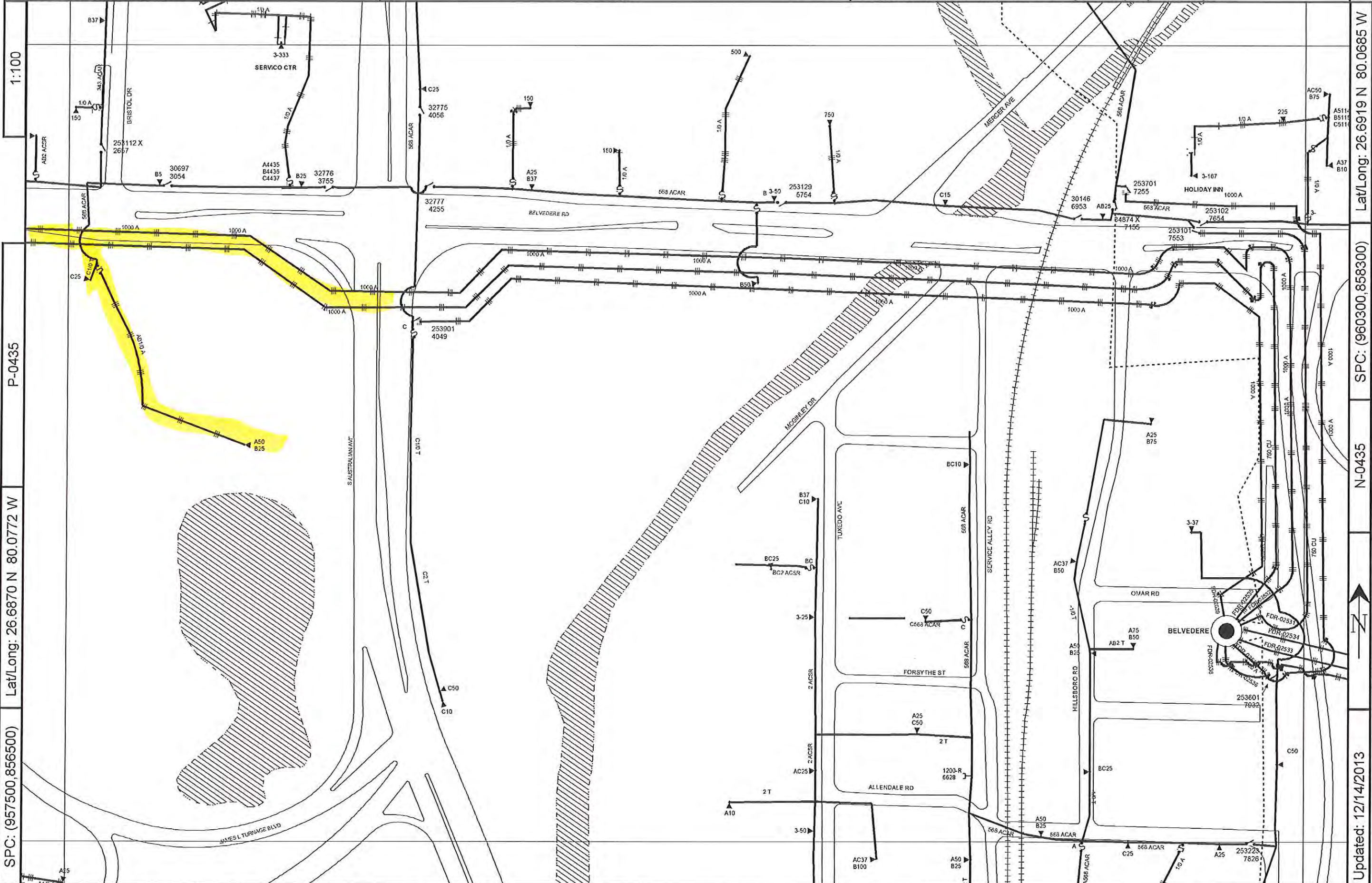
1-669

NOTE: 1 EXISTING UTILITIES ARE SHOWN IN APPROXIMATE LOCATION. CONTRACTOR SHALL HAVE ALL EXISTING UTILITIES LOCATED BY THE UTILITY OWNER PRIOR TO EXCAVATION IN THAT AREA. CONTRACTOR SHALL NOTIFY THE ENGINEER OF ANY CONFLICT IMMEDIATELY.

Call before you dig! 1-800-432-4770

O-0436

Confidential: For Florida Power & Light Company use only.



1:100

P-0435

Lat/Long: 26.6870 N 80.0772 W

SPC: (957500,856500)

Lat/Long: 26.6919 N 80.0685 W

SPC: (960300,858300)

N-0435

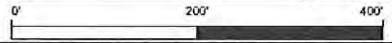
Updated: 12/14/2013

County: Palm Beach

Mgmt Area: West Palm

Svc Ctr: West Palm

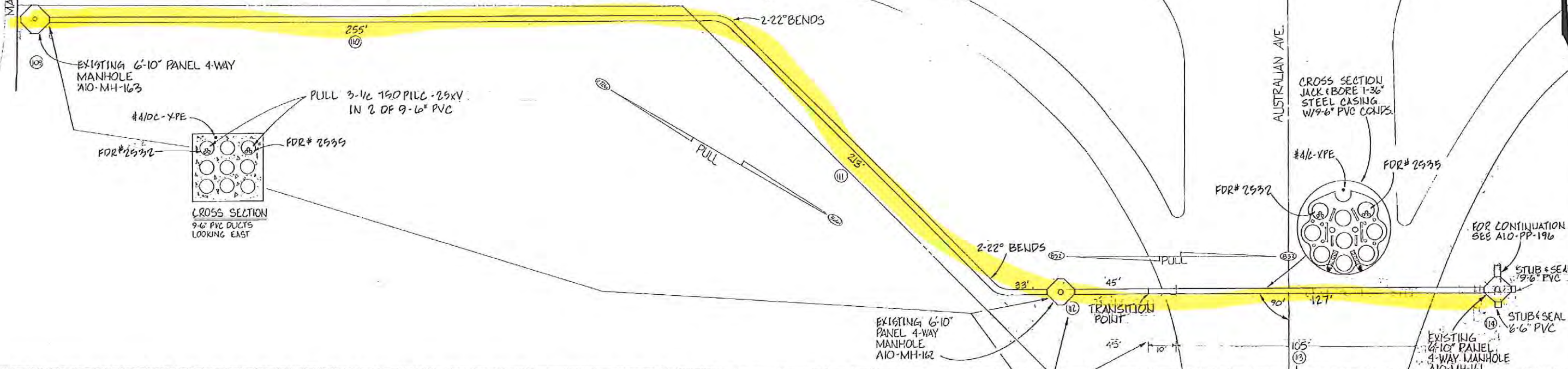
O-0434



Primary Map: O-0435

BELVEDERE RD.

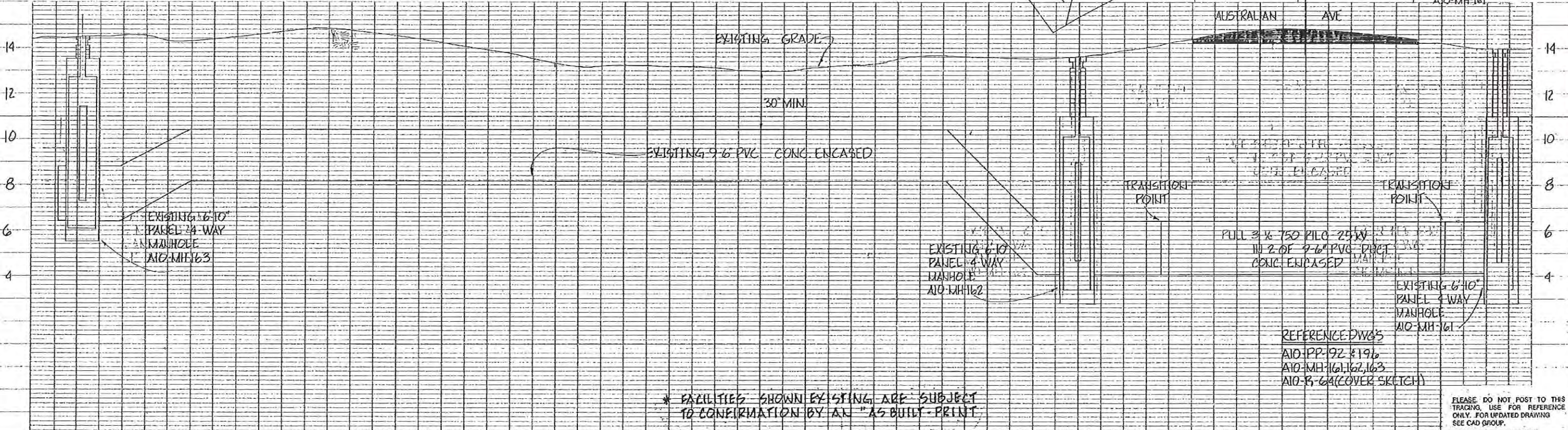
MATCH LINE SEE AIO-PP-192



CROSS SECTION JACK & BORE 1-36" STEEL CASING W/9-6" PVC COILS.

CROSS SECTION 9-6" PVC DUCTS LOOKING EAST

FOR CONTINUATION SEE AIO-PP-196

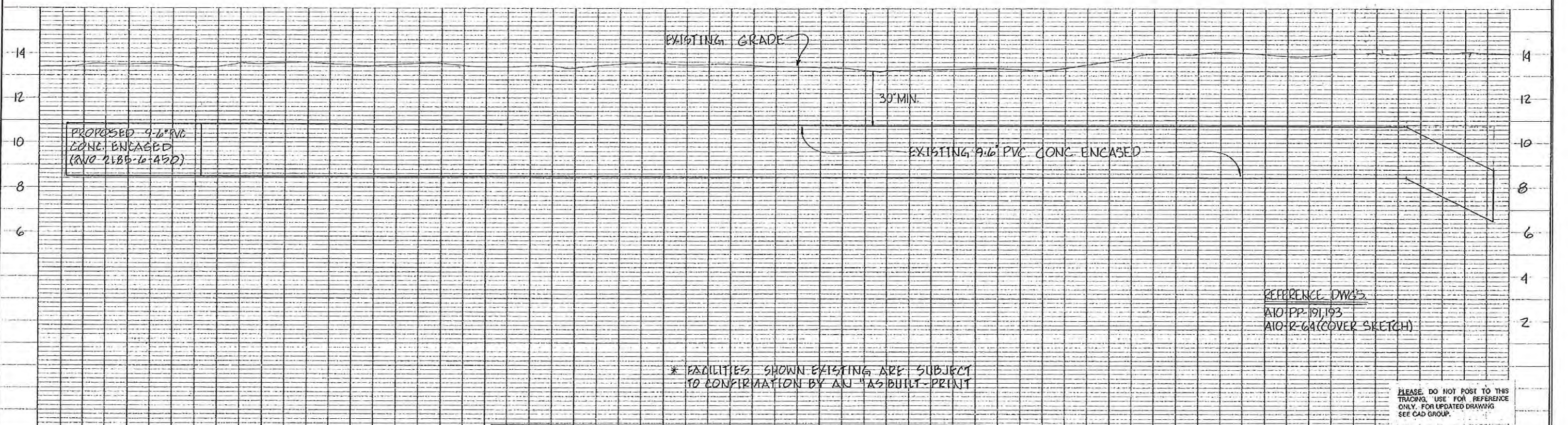
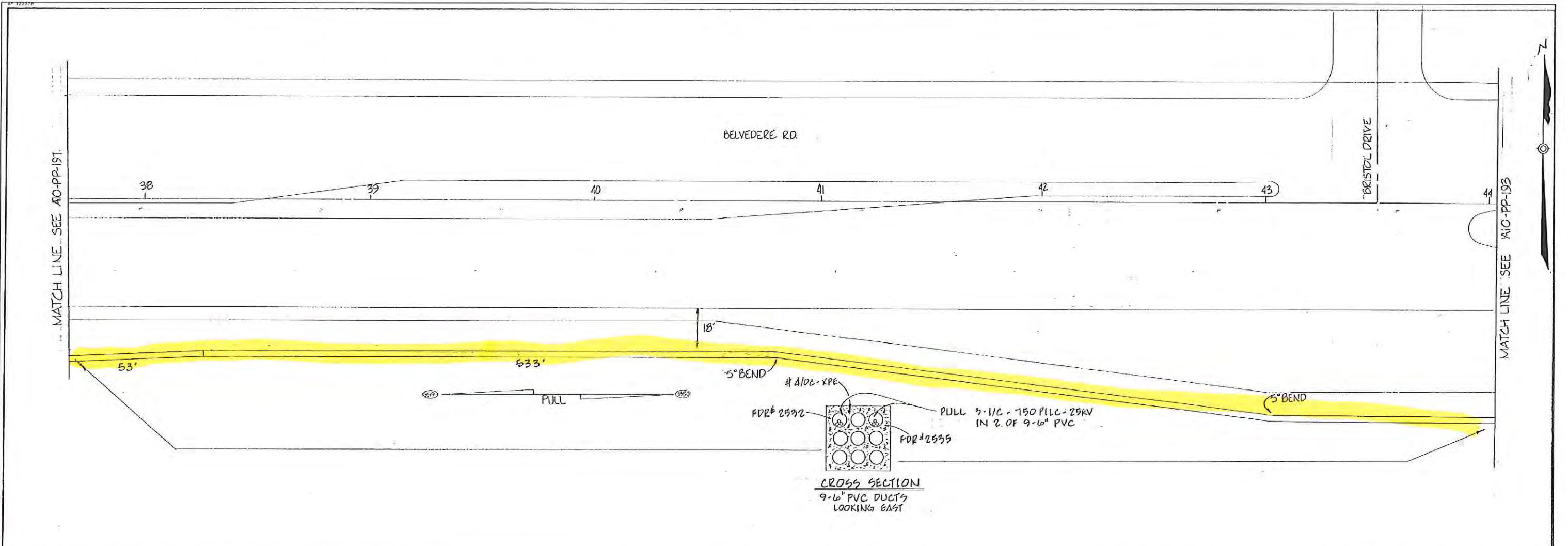


* FACILITIES SHOWN EXISTING ARE SUBJECT TO CONFIRMATION BY AN "AS BUILT" PRINT

REFERENCE DWGS
AIO-PP-192 & 193
AIO-MH-161, 162, 163
AIO-B-64 (COVER SKETCH)

PLEASE DO NOT POST TO THIS TRACING. USE FOR REFERENCE ONLY. FOR UPDATED DRAWING SEE CAD GROUP.

DATE: 1-15-87	SCALE: HOR: 1"=20'	VERT: 1"=2'	WB-OCL-WEST PALM BEACH
		DR: NACHIOLA	CH: JAF
ENGR: SEE REVISION APPROVED: J.T.D.		COR: JPA	COR: CPU
PBI A - DUCT BANK 3310 BELVEDERE RD. AT AUSTRALIAN AVE			2185-6-450 MAP NO. AIO20 AIO-PP-193



AS BUILT	TRENCH FT.	ENGR. BY	AUTH.	NO.	DATE	REVISION	BY	CH	COR	APP	AS BUILT	TRENCH FT.	ENGR. BY	AUTH.	NO.	DATE	REVISION	BY	CH	COR	APP	

DATE: 1-15-87 SCALE HOR: 1"=20' VERT: 1"=2'

WB-OCL-WEST PALM BEACH

2185-6-450

MAP NO. A1020

REV. NO. 1

PBIA - DUCT BANK

S/S/O BELVEDERE RD. AT BRISTOL DRIVE

AIO-PP-192

DR. MACHIELA CH. JAF

ENGR. SEE REVISION COR. JPH CPW

APPROVED D.T.D.

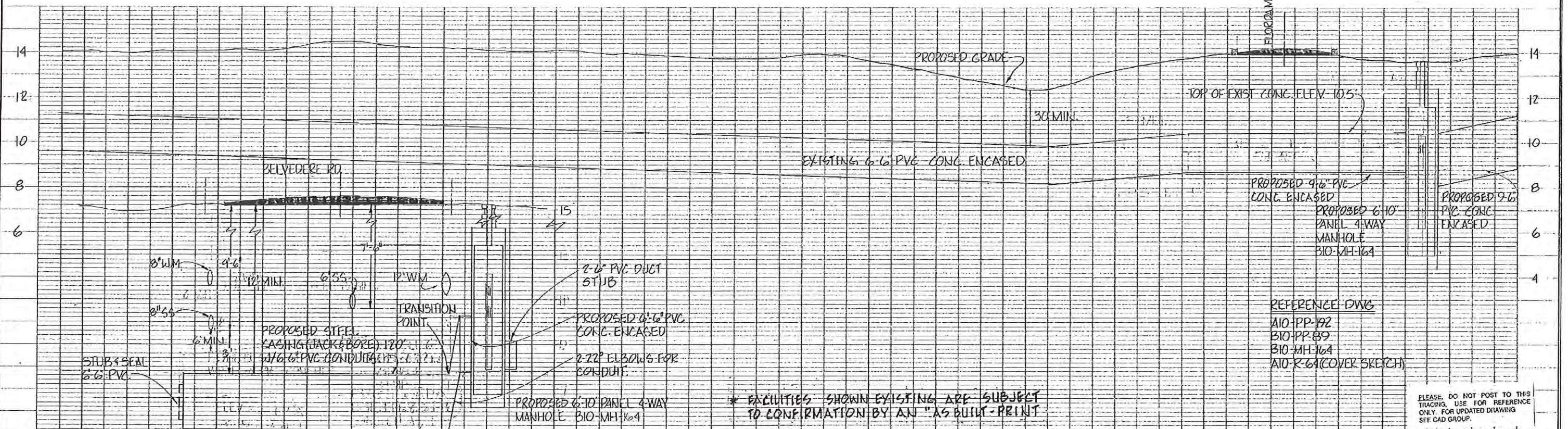
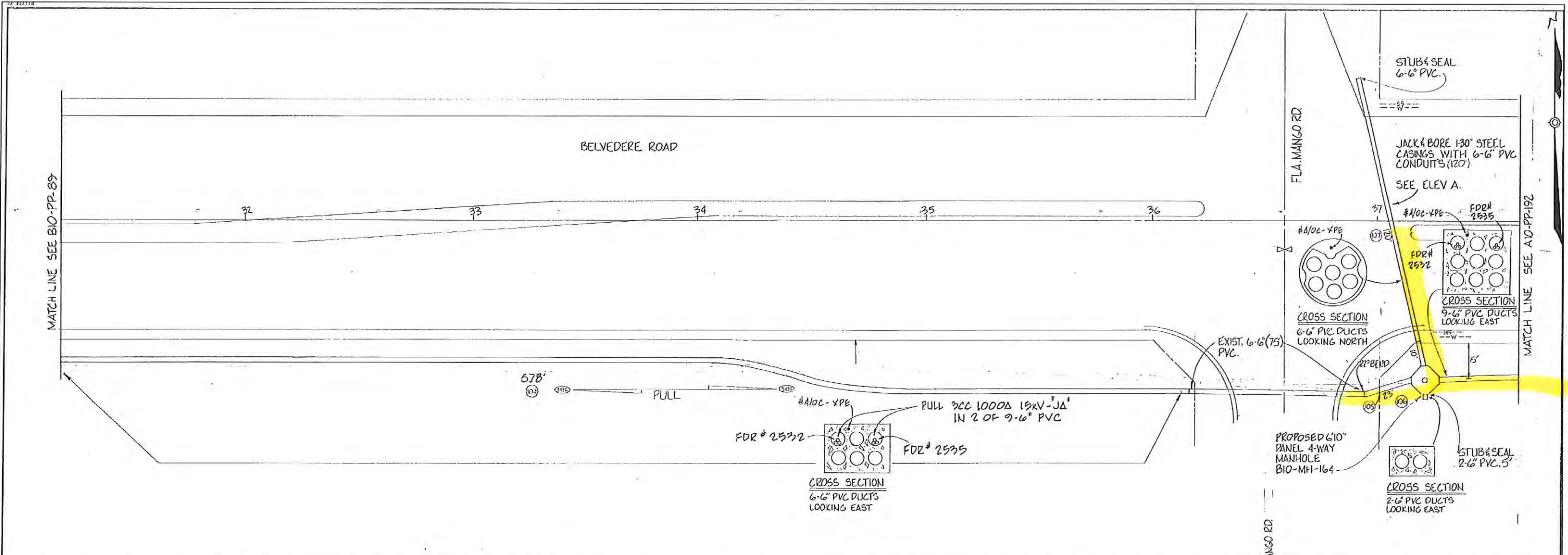
FLORIDA POWER & LIGHT COMPANY

PLEASE DO NOT POST TO THIS TRACING. USE FOR REFERENCE ONLY. FOR UPDATED DRAWING SEE CAD GROUP.

* FACILITIES SHOWN EXISTING ARE SUBJECT TO CONFIRMATION BY AN "AS BUILT" PRINT

REFERENCE DWG'S
AIO-PP-191, 193
AIO-R-64 (COVER SKETCH)

PROPOSED 9.6" PVC CONC. ENCASED (RNO 2185-6-450)



AS BUILT TRENCH FT		ENGR. BY	AUTH.	NO.	DATE	REVISION	BY	CH	COR	APP	AS BUILT TRENCH FT	ENGR. BY	AUTH.	NO.	DATE	REVISION	BY	CH	COR	APP	DATE	SCALE	HOR.	VERT.	WB-OCL-WEST PALM BEACH	2185-6-450	MAP NO. A1020	REV. NO. 2		
		GUTIERREZ WOODER	2185-6-450	5	3-8-88	INST. MH-164 & DUCT 63' EAST & 75' WEST PARTIAL AS-BUILT RECD 3-8-88, JOB TO BE COMP.						GUTIERREZ WOODER	2185-6-450	2	3-2-87	REVISE DIMENSIONS ON DUCT BANK					1-14-87	1"=20'	1"=2'							
												GUTIERREZ WOODER	2185-6-450	1	1-14-87	INST. DUCT BANK & MH 35, 36, 161, 162, 163, 164														

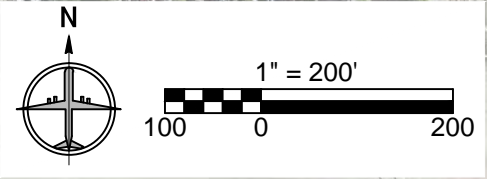
* FACILITIES SHOWN EXISTING ARE SUBJECT TO CONFIRMATION BY AN "AS BUILT-PRINT"

PLEASE, DO NOT POST TO THIS TRACING, USE FOR REFERENCE ONLY, FOR UPDATED DRAWING SEE CAD GROUP.



DR. MACHIELA
ENGR. SEE REVISION
APPROVED P.T.D.

PBIA - DUCTBANK
ALONG BELVEDERE RD.
AT FLORIDA MANGO RD.



FLORIDA MANGO ENTRANCE

BELVEDERE ROAD

AUSTRALIAN AVE.

P.B.I.A. LEASE PARCEL N-11 WPB
SEE PBC DRAWING S-3-14-3524
12.02 ACRES

CITY OF WPB LIMITS
UNINCORPORATED PBC LIMITS

P.B.I.A. LEASE PARCEL N-11 PBC
9.98 ACRES
(NO INTERIOR IMPROVEMENTS LOCATED)

P.B.I.A. LEASE
PARCEL N-11 LAKE
6.67 ACRES

TURNAGE BLVD.

HORIZONTAL SURFACE ELEV. 169'
MINIMUM FINISHED FLOOR ELEVATION = 14.53'
MAXIMUM STRUCTURE HEIGHT = 154.47'

NOTE: ELEVATIONS BASED ON NORTH AMERICAN VERTICAL DATUM OF 1988 (NAVD 88)

LEGEND:
— 169 — PART 77 CONTOURS
- - - PARCEL BOUNDARY
X^{12.50} EXISTING GROUND ELEVATION

169
160
150
140
130

