



**Broward County Board of County Commissioners
Port Everglades Department
January 2015
Revenue and Activity Reports (unaudited)**



Prepared by the Finance Division

TABLE OF CONTENTS

<u>REVENUE VARIANCE SUMMARY</u>	<u>1</u>
<u>REVENUE REPORT DASHBOARD.....</u>	<u>3</u>
<u>REVENUE REPORTS BY REVENUE CENTER</u>	<u>4</u>
REVENUE VS. PRIOR YEAR ACTUAL	5
REVENUE VS. BUDGET	6
<u>PETROLEUM REVENUE REPORTS</u>	<u>7</u>
REVENUE VS. PRIOR YEAR ACTUAL	8
REVENUE VS. BUDGET	9
PETROLEUM THROUGHPUT REPORT	10
PETROLEUM THROUGHPUT- DOMESTIC VS. FOREIGN	12
<u>CONTAINER REVENUE REPORTS.....</u>	<u>13</u>
REVENUE VS. PRIOR YEAR ACTUAL	14
REVENUE VS. BUDGET	15
CONTAINER OPERATOR THROUGHPUT	16
TERMINAL OPERATORS MINIMUM GUARANTEE	17
MONTHLY LOADED TEUS	18
<u>CRUISE REVENUE REPORTS.....</u>	<u>19</u>
REVENUE VS. PRIOR YEAR ACTUAL	20
REVENUE VS. BUDGET	21
CRUISE OPERATORS MINIMUM GUARANTEE	22
<u>BULK & BREAK BULK REVENUE REPORTS.....</u>	<u>23</u>
BULK & BREAK BULK REVENUE REPORTS	24
REVENUE VS. BUDGET	25
<u>REAL ESTATE REVENUE REPORTS</u>	<u>26</u>
REVENUE VS. PRIOR YEAR ACTUAL	27
REVENUE VS. BUDGET	29
<u>OTHER REVENUE CENTERS REPORTS</u>	<u>31</u>
REVENUE VS. PRIOR YEAR ACTUAL	32
REVENUE VS. BUDGET	33

**PORT EVERGLADES DEPARTMENT
FINANCE DIVISION**

Date: March 4, 2015

To: Steven Cernak, Chief Executive & Port Director
Glenn A. Wiltshire, Deputy Port Director
David Anderton, Assistant Director of Strategic Planning and Development
Neil Kutchera, Assistant to the Port Director – Petroleum
Robert J. Flint, Director of Operations
Jorge Hernandez, Director of Business Administration
Jim Pyburn, Director of Business Development

From: Leah Brasso, Director of Finance 

Subject: January 2015 Revenue Variance Summary (Unaudited)

This report includes the Revenue Report Dashboard and Revenue Reports by Revenue Center, as well as detail reports for Petroleum, Container, Cruise, Bulk & Break Bulk, Real Estate, and Other Revenue Centers.

Operating revenues through January totaled \$59,250,906, which represents a year-over-year increase of \$1,291,464, or 2%. After consultation with Port management, a summary of variances over 5% are as follows:

Cruise – Cruise revenues through January decreased year-over-year by a total of (\$2,231,830), or (9%). As reported in the previous months, this decrease was primarily due to the dry docking of Royal Caribbean’s Oasis of the Seas in Europe for the month of October. Additionally, Port User Charge revenues from Royal Caribbean decreased by \$8.1186 per passenger due to the expiration of the Capital Cost Recovery Charge on January 1, 2014. The year-over-year cumulative impact of these events on Port revenues from Royal Caribbean was (\$5,762,507). This decrease was partially offset by revenue generated in the amount of \$2,118,357 from 4, 5, and 7 day itineraries for the Caribbean Princess that were not offered as of January of the prior year, and an overall year-over-year increase in passenger volumes for multi-day and daily cruises of 9%.

Petroleum – Petroleum revenues through January increased year-over-year by a total of \$917,507, or 9%. As reported in the previous months, in addition to a 3% tariff increase and the new fire suppression fees which went into effect on October 1, 2014, this increase was also due to an overall year-over-year volume increase in petroleum barrels of 866,905, or 2%.

Real Estate – Real Estate revenues through January increased year-over-year by a total of \$576,510, or 12%. This increase was primarily due to rent adjustments associated with the appraisal of land leased by Chiquita and MSC pursuant to their lease agreements, as well as the expansion of King Ocean in Midport. In addition, the first quarter of FY2015 includes payments-

in-lieu of rent totaling \$52,064 from the Florida East Coast Railway, L.L.C. (FEC) in connection with the operation of the Intermodal Container Transfer Facility (ICTF) which opened in July of 2014.

Midport Parking Garage – Parking revenues through January for the Midport Garage increased year-over-year by a total of \$341,104 or 15%. As reported in the previous months, this was primarily due to an increase in the number of shorter-term cruises which has a positive impact on the number of passengers choosing to park at the Port.

Northport Parking Garage – Parking revenues through January for the Northport Garage increased year-over-year by a total of \$300,244, or 28%. As in the previous months, and like the Midport Garage, this variance was primarily due to an increase in the number of shorter-term cruises which has a positive impact on the number of passengers choosing to park at the Port. The Northport Garage was additionally impacted by a 6% increase in parking for the Boat Show compared to the prior year. Also, during November, there was an overflow in all parking areas in Midport for the Thanksgiving cruises which resulted in guests being directed to park in the Northport garage.

Break Bulk – Break Bulk revenues through January increased year-over-year by a total of \$403,151 or 46%. This increase was primarily due to increases in steel imports.

Bulk – Bulk revenues through January increased year-over-year by a total of \$238,732 or 35%. This increase was primarily due to increases in aggregate/cement and coal imports that increased by 57,000 ton and 35,697 tons respectively.

**BROWARD COUNTY BOARD OF COUNTY COMMISSIONERS
PORT EVERGLADES DEPARTMENT
REVENUE REPORT DASHBOARD
Month Ended January 2015**

FISCAL PERIOD	MONTH	YEAR TO DATE		YTD
	January-15	January-15	January-14	% Change
TOTAL OPERATING REVENUE	\$ 16,771,891	\$ 59,250,906	\$ 57,959,442	2%
Cruise	\$ 7,797,329	\$ 23,471,466	\$ 25,703,296	(-9%)
Containerized Cargo	\$ 2,867,031	\$ 12,800,510	\$ 12,142,166	5%
Petroleum	\$ 2,795,506	\$ 10,750,879	\$ 9,833,372	9%
Real Estate	\$ 1,370,239	\$ 5,234,753	\$ 4,658,243	12%
Midport Garage	\$ 755,585	\$ 2,590,926	\$ 2,249,822	15%
Northport Garage	\$ 432,990	\$ 1,355,642	\$ 1,055,398	28%
Break Bulk	\$ 300,170	\$ 1,276,341	\$ 873,190	46%
Bulk	\$ 239,902	\$ 923,136	\$ 684,404	35%
Lay-In (Includes Navy)	\$ 56,534	\$ 407,372	\$ 385,329	6%
Finance	\$ 14,115	\$ 62,792	\$ 33,556	87%
Foreign Trade Zone	\$ 121,907	\$ 293,415	\$ 278,619	5%
Rail Revenues (Ethanol - FEC/Motiva)	\$ -	\$ -	\$ -	N/A
Public Safety Services	\$ 20,583	\$ 83,674	\$ 62,047	35%
TOTAL SHIP CALLS	348	1,382	1,463	(-6%)
Cruise Ships - Multi Day	97	308	284	8%
Cruise Ships - Daily	22	99	68	46%
Container Ships	136	566	642	(-12%)
Cargo Ships	18	82	65	26%
Petroleum Vessels - Barges	18	74	80	(-8%)
Petroleum Vessels - Tankers	29	110	115	(-4%)
Other (Other Tugs, Bunkers, Repairs)	28	143	209	(-32%)
TOTAL CRUISE PASSENGERS	543,707	1,737,366	1,589,681	9%
Cruise Ships - Multi Day	535,392	1,694,564	1,559,836	9%
Cruise Ships - Daily	8,315	42,802	29,845	43%
TOTAL CONTAINERIZED CARGO (tons) *	599,542	2,205,540	2,071,556	6%
TOTAL BULK & BREAK BULK (tons) *	148,435	522,839	392,668	33%
TOTAL TEUs	93,629	356,467	324,658	10%
TEUs Empty-Inbound	19,025	70,903	59,528	19%
TEUs Empty-Outbound	11,267	33,594	33,525	0%
Total TEUs Empty	30,292	104,497	93,053	12%
TEUs Loaded-Inbound	28,927	106,293	104,875	1%
TEUs Loaded-Outbound	34,410	145,677	126,730	15%
Total TEUs Loaded	63,337	251,970	231,605	9%
ICTF - Domestic Cargo Billable Revenue	\$ 16,277	\$ 52,064	\$ -	N/A
ICTF - Domestic Cargo (Billable)	3,617	13,842	-	N/A
ICTF - International/Railroad Cargo (Non-Billable)	5,275	20,466	-	N/A
TOTAL PETROLEUM (Barrels)	9,767,141	38,493,651	37,626,746	2%
Petroleum - (Waterborne Barrels)	9,140,876	36,544,954	35,965,899	2%
Petroleum - (Truck & Rail Barrels)	626,265	1,948,697	1,660,847	17%
Petroleum - Percentage Domestic	63%	70%	72%	(-3%)
Accounts Receivable - Percentage Current	99.2%	99.2%	97.3%	2%

*Tonnage is measured in 2,000-pound short tons.

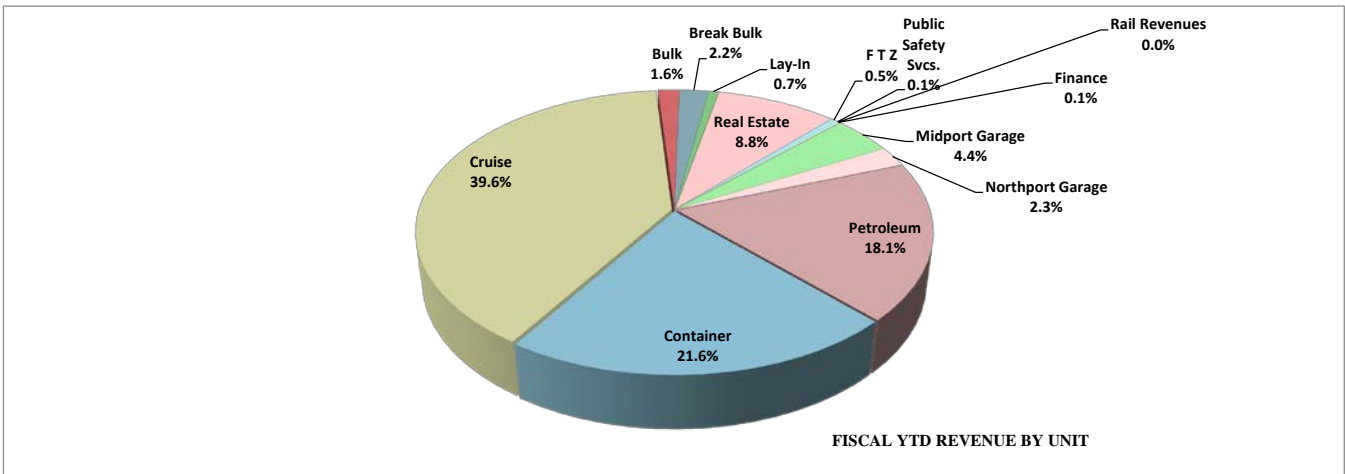
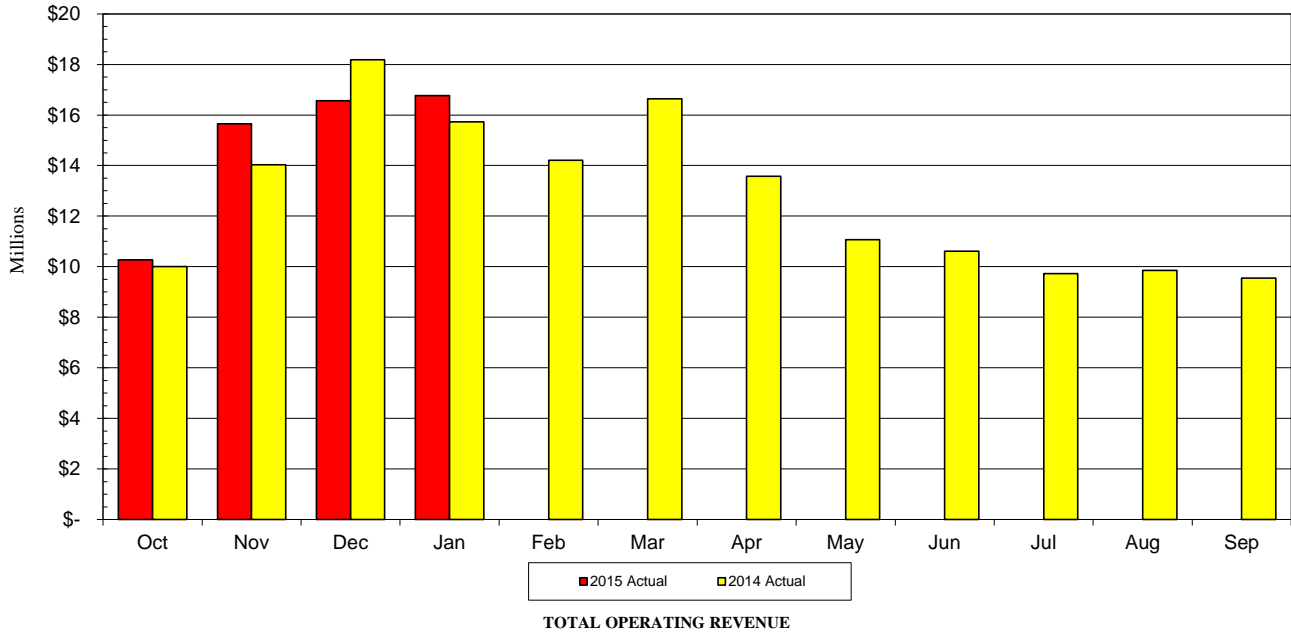
Revenue Reports By Revenue Center

PORT EVERGLADES DEPARTMENT

FISCAL YEAR 2015 REVENUE TO FISCAL YEAR 2014 REVENUE REPORT

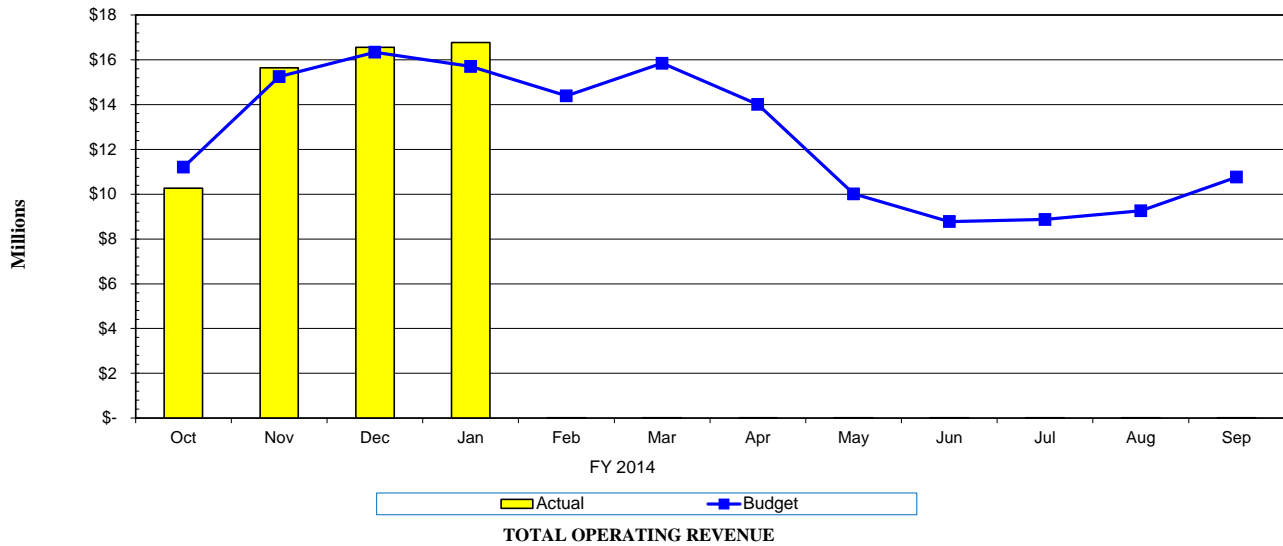
JANUARY 2015

FISCAL MONTH				F Y T D				
<u>2015 Actual</u>	<u>2014 Actual</u>	<u>Variance</u>		<u>2015 Actual</u>	<u>2014 Actual</u>	<u>Variance</u>	<u>% Inc/(Dcr)</u>	
\$2,795,506	\$2,688,444	\$107,062	1010	Petroleum	\$10,750,879	\$9,833,372	\$917,507	9%
2,867,031	2,951,073	(84,042)	1015	Container	12,800,510	12,142,166	658,344	5%
7,797,329	7,296,254	501,075	1020	Cruise	23,471,466	25,703,296	(2,231,830)	(-9%)
239,902	176,286	63,616	1025	Bulk	923,136	684,404	238,732	35%
300,170	245,091	55,079	1030	Break Bulk	1,276,341	873,190	403,151	46%
56,534	31,594	24,940	1045	Lay-In	407,372	385,329	22,043	6%
1,370,239	1,190,443	179,796	1050	Real Estate	5,234,753	4,658,243	576,510	12%
121,907	113,534	8,373	1055	F T Z	293,415	278,619	14,796	5%
20,583	17,554	3,029	1060	Public Safety Svcs.	83,674	62,047	21,627	35%
0	0	0	2060	Rail Revenues	0	0	0	0%
14,115	10,903	3,212	3000	Finance	62,792	33,556	29,236	87%
755,585	698,974	56,611	2010	Midport Garage	2,590,926	2,249,822	341,104	15%
432,990	310,533	122,457	2020	Northport Garage	1,355,642	1,055,398	300,244	28%
<u>\$16,771,891</u>	<u>\$15,730,683</u>	<u>\$1,041,208</u>		TOTAL OPERATING REVENUE	<u>\$59,250,906</u>	<u>\$57,959,442</u>	<u>\$1,291,464</u>	<u>2%</u>



**PORT EVERGLADES DEPARTMENT
FISCAL YEAR 2015 REVENUE TO BUDGET REPORT
JANUARY 2015**

FISCAL MONTH				FYTD				
<u>Actual</u>	<u>Budget</u>	<u>Variance</u>			<u>Actual</u>	<u>Budget</u>	<u>Variance</u>	<u>% Inc/(Dcr)</u>
\$2,795,506	\$2,470,707	\$324,799	1010	Petroleum	\$10,750,879	\$9,882,828	\$868,051	9%
2,867,031	2,980,797	(113,766)	1015	Container	12,800,510	11,611,098	1,189,412	10%
7,797,329	7,553,700	243,629	1020	Cruise	23,471,466	26,675,700	(3,204,234)	(-12%)
239,902	175,500	64,402	1025	Bulk	923,136	683,300	239,836	35%
300,170	94,200	205,970	1030	Break Bulk	1,276,341	718,200	558,141	78%
56,534	86,642	(30,108)	1045	Lay-In	407,372	346,568	60,804	18%
1,370,239	1,206,268	163,971	1050	Real Estate	5,234,753	4,880,442	354,311	7%
121,907	108,500	13,407	1055	F T Z	293,415	316,800	(23,385)	(-7%)
20,583	14,000	6,583	1060	Public Safety Svcs.	83,674	56,000	27,674	49%
0	0	0	2060	Rail Revenues	0	0	0	-
14,115	12,500	1,615	3000	Finance	62,792	50,000	12,792	26%
755,585	695,500	60,085	2010	Midport Garage	2,590,926	2,256,600	334,326	15%
<u>432,990</u>	<u>310,000</u>	<u>122,990</u>	2020	Northport Garage	<u>1,355,642</u>	<u>1,040,200</u>	<u>315,442</u>	<u>30%</u>
<u>\$16,771,891</u>	<u>\$15,708,314</u>	<u>\$1,063,577</u>		TOTAL OPERATING REVENUE	<u>\$59,250,906</u>	<u>\$58,517,736</u>	<u>\$733,170</u>	<u>1%</u>



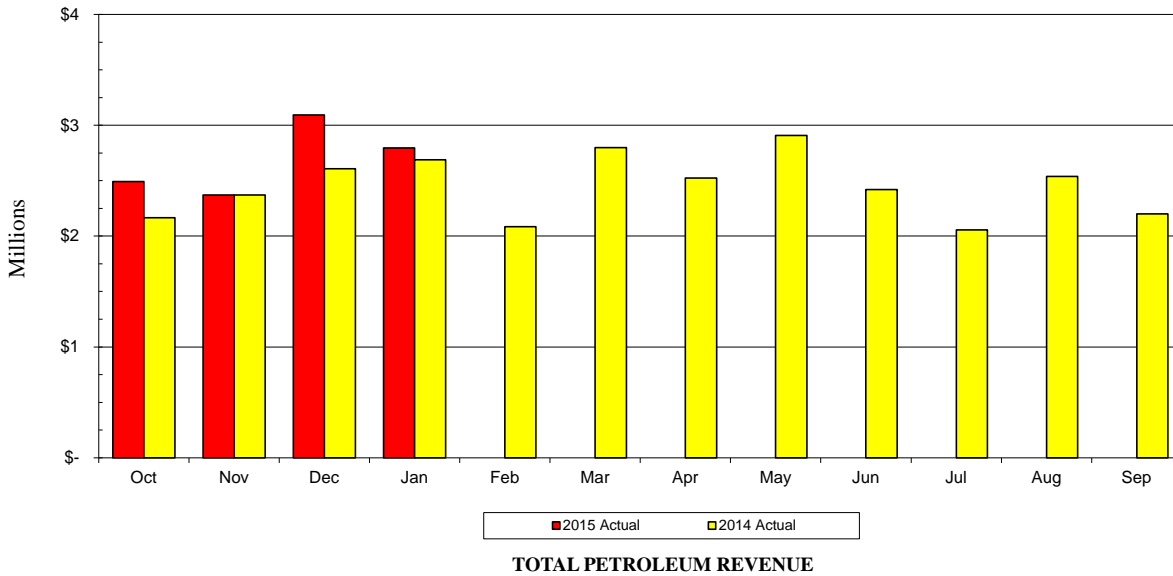
Petroleum Revenue Reports

PORT EVERGLADES DEPARTMENT

FISCAL YEAR 2015 REVENUE TO FISCAL YEAR 2014 REVENUE REPORT

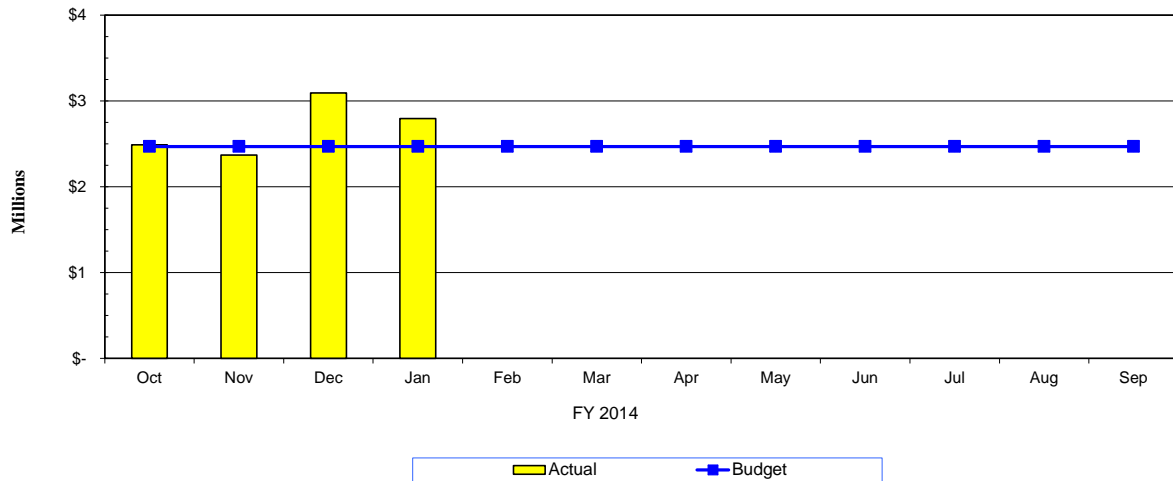
JANUARY 2015

FISCAL MONTH			FYTD				
<u>2015 Actual</u>	<u>2014 Actual</u>	<u>Variance</u>			<u>2015 Actual</u>	<u>2014 Actual</u>	<u>Variance</u>
			1010 Petroleum				
\$1,464,369	\$1,572,126	(\$107,757)	4511	Cargo Wharfage	\$5,851,268	\$5,591,512	\$259,756
225,001	247,698	(22,697)	4517	Fire Protection Service	897,669	880,984	16,685
84,693	84,741	(48)	4522	Security Fees	324,314	316,656	7,658
176,231	144,698	31,533	4525	Truck & Rail Whfg.	548,363	456,570	91,793
619,960	526,888	93,072	4531	Dockage	2,235,030	2,111,171	123,859
24,723	24,675	48	4541	Harbormaster	97,090	105,636	(8,546)
59,857	51,889	7,968	4542	Linehandlers	225,436	212,749	12,687
36,099	31,975	4,124	4543	Tug Fees	152,170	134,206	17,964
1,293	1,016	277	4572	Penalties	16,107	13,135	2,972
5,608	2,738	2,870	4581	Fresh Water	18,495	10,753	7,742
0	0	0	4583	Sewage Disposal	0	0	0
0	0	0	4589	Reimburse Labor	0	0	0
<u>97,672</u>	<u>0</u>	<u>97,672</u>	6310	Special Assessment	<u>384,937</u>	<u>0</u>	<u>384,937</u>
<u>\$2,795,506</u>	<u>\$2,688,444</u>	<u>\$107,062</u>	Total Petroleum Revenue		<u>\$10,750,879</u>	<u>\$9,833,372</u>	<u>\$917,507</u>



**PORT EVERGLADES DEPARTMENT
FISCAL YEAR 2015 REVENUE TO BUDGET REPORT
JANUARY 2015**

FISCAL MONTH			F Y T D				
<u>Actual</u>	<u>Budget</u>	<u>Variance</u>			<u>Actual</u>	<u>Budget</u>	<u>Variance</u>
			1010	Petroleum			
\$1,464,369	\$1,401,420	\$62,949	4511	Cargo Wharfage	\$5,851,268	\$5,605,680	\$245,588
225,001	312,507	(87,506)	4517	Fire Protection Service	897,669	1,250,028	(352,359)
84,693	72,100	12,593	4522	Security Fees	324,314	288,400	35,914
176,231	117,220	59,011	4525	Truck & Rail Whfg.	548,363	468,880	79,483
619,960	469,600	150,360	4531	Dockage	2,235,030	1,878,400	356,630
24,723	23,900	823	4541	Harbormaster	97,090	95,600	1,490
59,857	49,960	9,897	4542	Linehandlers	225,436	199,840	25,596
36,099	22,000	14,099	4543	Tug Fees	152,170	88,000	64,170
1,293	0	1,293	4572	Penalties	16,107	0	16,107
5,608	2,000	3,608	4581	Fresh Water	18,495	8,000	10,495
0	0	0	4583	Sewage Disposal	0	0	0
0	0	0	4589	Reimburse Labor	0	0	0
<u>97,672</u>	<u>0</u>	<u>97,672</u>	6310	Special Assessment	<u>384,937</u>	<u>0</u>	<u>384,937</u>
<u>\$2,795,506</u>	<u>\$2,470,707</u>	<u>\$324,799</u>		Total Petroleum Revenue	<u>\$10,750,879</u>	<u>\$9,882,828</u>	<u>\$868,051</u>



TOTAL PETROLEUM REVENUE

PORT EVERGLADES
Petroleum Throughput - Operator Report
FYTD Summary
Fiscal Year 2015
January 2015

TERMINAL	Barrels of Petroleum												Total Bbls	Total Bbls
	Oct	Nov	Dec	Jan	Feb	Mar	Apr	May	Jun	Jul	Aug	Sep	FYTD 2015	FYTD 2014
Amerada Hess Corp													-	1,343,570
Amoco Oil Co	244,290	258,968	447,347	166,130									1,116,735	1,382,964
Chevron USA	888,514	615,512	1,300,444	948,611									3,753,080	4,769,034
Citgo/Champlin	121,373	78,035	40,134	154,227									393,769	266,515
Citgo Petroleum Corp	808,117	583,255	1,057,337	933,209									3,381,918	2,620,951
High Sierra Terminaling	31,747	-	-	42,487									74,234	-
Buckeye (MABU)	270,038	244,524	402,098	254,295									1,170,955	-
Marathon Oil Co Eisenhower (MARO)	698,485	639,586	1,004,692	952,816									3,295,579	3,572,952
Marathon Oil Co Spangler (Mant)	798,499	641,250	1,073,521	918,260									3,431,530	3,459,572
SemGroup LP													-	-
Mobil Oil Corp	744,901	1,045,161	772,223	808,019									3,370,304	3,029,838
Motiva Terminal East(GATX)	683,524	274,256	349,110	364,994									1,671,884	731,519
Motiva Enterprises South(STAR)	1,548,666	1,230,541	1,369,272	1,207,273									5,355,753	5,116,936
Valero Marketing & Supply Co.	1,485,710	1,432,346	2,116,044	2,019,354									7,053,454	5,776,701
Targa Midstream Svcs	17,310	-	35,698	-									53,008	89,890
Transmontaigne Products (N)	616,814	1,180,610	975,716	762,584									3,535,724	4,921,071
Transmontaigne Product Svc	210,901	127,430	262,511	234,882									835,724	545,233
Port Wide Total Barrels	9,168,887	8,351,475	11,206,148	9,767,141	-	-	-	-	-	-	-	-	38,493,651	37,626,746

PORT EVERGLADES
Petroleum Throughput - Product Report
FYTD Summary
Fiscal Year 2015
January 2015

PRODUCT	Barrels of Petroleum												Total Bbls	Total Bbls
	Oct	Nov	Dec	Jan	Feb	Mar	Apr	May	Jun	Jul	Aug	Sep	FYTD 2015	FYTD 2014
Asphalt	31,747	35,718	-	42,487									109,952	142,804
Aviation Gasoline	24,001	-	21,292	35,795									81,088	82,004
Bio-diesel	-	-	-	-									-	-
Crude Oil Loaded	-	91,437	92,094	-									183,531	285,141
Diesel Fuel	1,093,100	1,022,396	1,408,884	1,202,806									4,727,185	4,473,136
Ethanol	207,843	110,154	76,855	19,991									414,843	367,495
Fuel Oil	73,447	311,849	365,128	569,521									1,319,946	1,965,924
Gasoline	4,663,955	4,256,930	5,885,329	4,578,760									19,384,975	19,328,726
Jet Fuel	2,638,627	2,088,326	2,851,956	2,691,516									10,270,426	9,230,781
Propane	17,310	-	35,698	-									53,008	89,890
Truck & Rail WHF-Ethanol	418,857	434,664	468,911	626,265									1,948,697	1,660,847
Grand Total**	9,168,887	8,351,475	11,206,148	9,767,141	-	-	-	-	-	-	-	-	38,493,651	37,626,746

**Petroleum Throughput - Domestic vs. Foreign
FYTD - January 2015**

Commodity Code	Commodity Name	Domestic Barrels	Domestic %	Foreign Barrels	Foreign %	Total Barrels
PE00	WHARFAGE ASPHALT	35,718	32	74,234	68	109,952
PE01	WHARFAGE AVGAS	81,088	100	-	-	81,088
PE02	WHARFAGE DIESEL	4,611,934	98	115,251	2	4,727,185
PE03	WHARFAGE FUEL OIL	103,560	8	1,216,385	92	1,319,946
PE04	WHARFAGE GASOLINE	17,866,538	92	1,518,437	8	19,384,975
PE05	WHARFAGE JET FUEL	1,709,972	17	8,560,454	83	10,270,426
PE09	WHARFAGE PROPANE	53,008	100	-	-	53,008
PE13	WHARFAGE CRUDE OIL (LOADED)	183,531	100	-	-	183,531
PE14	WHARFAGE ETHANOL	337,988	81	76,855	19	414,843
PTR1	TRUCK & RAIL - ETHANOL	1,948,697	100	-	-	1,948,697
TOTALS		26,932,035	70%	11,561,616	30%	38,493,651

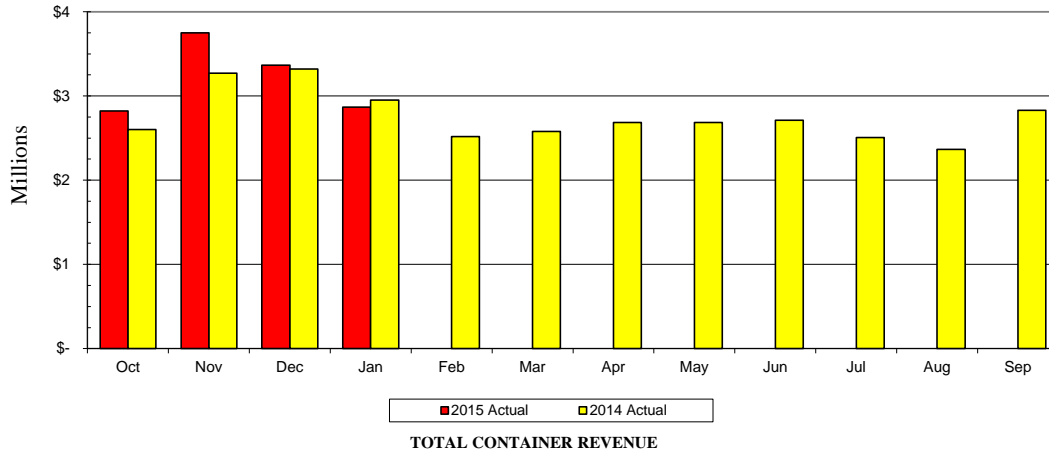
Container Revenue Reports

PORT EVERGLADES DEPARTMENT

FISCAL YEAR 2015 REVENUE TO FISCAL YEAR 2014 REVENUE REPORT

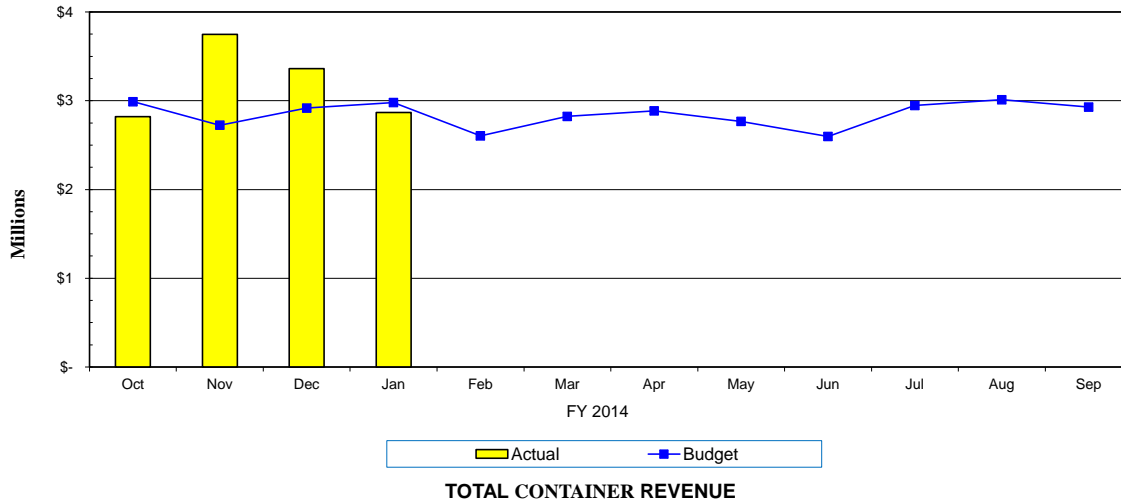
JANUARY 2015

FISCAL MONTH			F Y T D				
<u>2015 Actual</u>	<u>2014 Actual</u>	<u>Variance</u>			<u>2015 Actual</u>	<u>2014 Actual</u>	<u>Variance</u>
			1015	Container			
\$207,535	\$347,977	(\$140,442)	4511	Cargo Wharfage	\$850,794	\$1,382,063	(\$531,269)
25,620	39,966	(14,346)	4512	Box Wharfage	102,024	143,933	(41,909)
(520)	(291)	(229)	4519	Whrg. Vol. Incentives	(874)	(1,381)	507
1,461,247	1,370,397	90,850	4520	Minimum Payments	5,808,495	5,450,224	358,271
437,552	304,612	132,940	4521	Terminal Oper. Revenues	3,064,385	1,750,073	1,314,312
228,265	210,153	18,112	4522	Security Fees	876,105	828,859	47,246
57,740	166,897	(109,157)	4531	Dockage	316,520	579,613	(263,093)
0	0	0	4539	Dockage Vol. Incentives	0	0	0
9,822	14,281	(4,459)	4541	Harbormaster	46,516	62,424	(15,908)
151,515	179,754	(28,239)	4542	Linehandlers	640,905	705,693	(64,788)
30,398	41,136	(10,738)	4543	Tug Fees	124,430	160,411	(35,981)
0	0	0	4551	Storage	0	0	0
0	0	0	4552	Demurrage	0	0	0
84,053	93,985	(9,932)	4553	Grid Rental	345,445	370,277	(24,832)
149,869	159,096	(9,227)	4566	Crane Rental	572,616	617,326	(44,710)
0	0	0	4568	Crane/Heavy Lift	0	0	0
(12,943)	(9,942)	(3,001)	4569	Crane Vol. Incentives	(46,156)	(31,985)	(14,171)
571	1,322	(751)	4572	Penalties	15,776	20,010	(4,234)
6,941	7,885	(944)	4581	Fresh Water	32,421	36,019	(3,598)
0	0	0	4583	Sewage Disposal	0	0	0
29,366	12,095	17,271	4587	Reefer Electricity	38,608	43,188	(4,580)
0	0	0	4588	Reimb. Electricity	0	0	0
0	0	0	4589	Reimburse Labor	0	419	(419)
0	12,500	(12,500)	4601	Marketing Fees	12,500	25,000	(12,500)
0	(750)	750	6990	Misc. Revenue	0	0	0
<u>\$2,867,031</u>	<u>\$2,951,073</u>	<u>(\$84,042)</u>		Total Container Revenue	<u>\$12,800,510</u>	<u>\$12,142,166</u>	<u>\$658,344</u>



**PORT EVERGLADES DEPARTMENT
FISCAL YEAR 2015 REVENUE TO BUDGET REPORT
JANUARY 2015**

FISCAL MONTH			FYTD				
Actual	Budget	Variance	1015 Container		Actual	Budget	Variance
\$207,535	\$291,300	(\$83,765)	4511	Cargo Wharfage	\$850,794	\$1,296,900	(\$446,106)
25,620	32,920	(7,300)	4512	Box Wharfage	102,024	138,280	(36,256)
(520)	(2,950)	2,430	4519	Whrg. Vol. Incentives	(874)	(4,200)	3,326
1,461,247	1,679,520	(218,273)	4520	Minimum Payments	5,808,495	6,194,480	(385,985)
437,552	200,000	237,552	4521	Terminal Oper. Revenues	3,064,385	700,000	2,364,385
228,265	202,600	25,665	4522	Security Fees	876,105	816,400	59,705
57,740	112,020	(54,280)	4531	Dockage	316,520	481,180	(164,660)
0	0	0	4539	Dockage Vol. Incentives	0	0	0
9,822	13,800	(3,978)	4541	Harbormaster	46,516	58,000	(11,484)
151,515	134,610	16,905	4542	Linehandlers	640,905	659,540	(18,635)
30,398	30,000	398	4543	Tug Fees	124,430	149,300	(24,870)
0	0	0	4551	Storage	0	0	0
0	0	0	4552	Demurrage	0	0	0
84,053	94,990	(10,937)	4553	Grid Rental	345,445	420,560	(75,115)
149,869	155,400	(5,531)	4566	Crane Rental	572,616	605,800	(33,184)
0	9,230	(9,230)	4568	Crane-Heavy Lift	0	9,230	(9,230)
(12,943)	(2,900)	(10,043)	4569	Crane Vol. Incentives	(46,156)	(22,400)	(23,756)
571	1,167	(596)	4572	Penalties	15,776	4,668	11,108
6,941	11,930	(4,989)	4581	Fresh Water	32,421	41,020	(8,599)
0	0	0	4583	Sewage Disposal	0	0	0
29,366	3,760	25,606	4587	Reefer Electricity	38,608	35,340	3,268
0	0	0	4588	Reimb. Electricity	0	0	0
0	0	0	4589	Reimburse Labor	0	0	0
0	12,500	(12,500)	4601	Marketing Fees	12,500	25,000	(12,500)
0	900	(900)	4544	Other Revenue	0	2,000	(2,000)
\$2,867,031	\$2,980,797	(\$113,766)	Total Container Revenue		\$12,800,510	\$11,611,098	\$1,189,412



PORT EVERGLADES
Container Operator Throughput
Fiscal Year 2015
FYTD Summary
January 2015

OPERATOR	TEUs		Tons		FY 2015 ACRES			Avg. Mthly TEUs/Acre		Avg. Mthly Tons/Acre	
	FYTD 2015	FYTD 2014	FYTD 2015	FYTD 2014	Leased	Grid	Total	FYTD 2015	FYTD 2014	FYTD 2015	FY 2014
Chiquita Brands Company	3,707	21,942	29,197	165,564	13.10	-	13.10	70.7	418.7	557.2	3,159.6
Coleary Transport Co., Inc.	713	-	4,408	-	-	2.80	2.80	63.7	-	393.6	-
Crowley Liner Services	113,789	94,386	646,968	539,326	74.00	-	74.00	384.4	295.0	2,185.7	1,685.4
Dole Fresh Fruits	2,626	5,644	14,225	32,632	5.34	-	5.34	122.9	264.2	666.0	1,527.7
Florida International Terminal	49,858	48,416	341,907	385,734	36.03	5.00	41.03	303.8	295.0	2,083.3	2,350.3
Florida Transportation Services	89	212	18	834	-	2.00	2.00	-	46.5	-	182.9
Hyde Shipping	18,582	12,608	84,826	53,522	7.00	-	7.00	663.6	450.3	3,029.5	1,911.5
King Ocean Services, LTD (Cayman Islands) Inc.	54,507	45,430	238,376	203,657	41.15	5.10	46.25	294.6	291.7	1,288.5	1,307.5
Port Everglades Terminal	66,376	48,000	603,138	434,807	39.18	-	39.18	423.5	306.3	3,848.5	2,774.4
Portus - PEV LLC	7,345	24,776	52,168	135,369	-	9.08	9.08	202.2	279.9	1,590.1	1,528.8
Sea Star Line	-	3,089	-	19,035	-	-	-	-	110.3	-	679.8
Seafreight Line	24,392	20,155	117,694	101,034	25.00	-	25.00	243.9	201.6	1,392.2	1,010.3
Sol Shipping Services, Inc.	14,483	-	72,615	-	5.34	-	5.34	678.0	-	3,399.6	-
Unassigned	-	-	-	42	-	-	-	-	-	-	-
Grand Total	356,467	324,658	2,205,540	2,071,556	246.14	23.98	270.12	329.9	284.5	2,041.3	1,815.4

PORT EVERGLADES**Terminal Operators Minimum Guarantee for Contract Year to Date****January 2015**

OPERATOR	Next Contract Year End	Minimum Guaranteed units	Minimum Guaranteed Amount	Tier	Contract YTD January-15 Amount
Crowley Liner Services	12/31/2015	Containers	115,000 115,001 -120,750	Tier 1 Tier 2	13,976
Florida International Terminal	7/7/2015	Containers	75,000		51,355
King Ocean Services, LTD (Cayman Islands) Inc.	1/31/2015	Containers	60,000 60,001-72,000	Tier 1 Tier 2	60,000 42,519
Mediterranean Shipping Company	10/31/2015	Containers	75,000		30,699
Seafreight Agencies USA	5/31/2015	Containers	46,305		26,822
Chiquita Fresh North America	9/30/2015	Tons	262,000		29,198
Dole Fresh Fruits	8/31/2015	Tons	106,800		24,257
Hyde Shipping	6/30/2015	Tons	140,000		110,509
Sol Shipping Services, Inc. (Agrix)	10/31/2015	Tons	133,500		72,615

**Port Everglades Department of Broward County
Monthly Loaded TEUs Report**

		Fiscal Year 2015												TOTAL
		OCT	NOV	DEC	JAN	FEB	MAR	APR	MAY	JUN	JUL	AUG	SEP	TOTAL
Inbound	Empty	18,318	18,940	14,620	19,025									70,903
	Loaded	23,429	26,091	27,846	28,927									106,293
Total Inbound		41,747	45,031	42,466	47,952	-	-	-	-	-	-	-	-	177,196
Outbound	Empty	6,683	6,145	9,499	11,267									33,594
	Loaded	38,244	40,625	32,398	34,410									145,677
Total Outbound		44,927	46,770	41,897	45,677	-	-	-	-	-	-	-	-	179,271
Total Empty		25,001	25,085	24,119	30,292	-	-	-	-	-	-	-	-	104,497
Total Loaded		61,673	66,716	60,244	63,337	-	-	-	-	-	-	-	-	251,970
Total TEUs		86,674	91,801	84,363	93,629	-	-	-	-	-	-	-	-	356,467

		Fiscal Year 2014												TOTAL
		OCT	NOV	DEC	JAN	FEB	MAR	APR	MAY	JUN	JUL	AUG	SEP	TOTAL
Inbound	Empty	16,240	17,544	13,607	12,137	12,499	12,801	11,938	13,937	14,011	16,478	16,390	15,810	173,392
	Loaded	23,366	25,394	29,069	27,047	28,176	34,000	33,434	30,567	25,388	26,158	26,680	23,363	332,641
Total Inbound		39,606	42,937	42,676	39,184	40,675	46,801	45,372	44,504	39,399	42,636	43,070	39,173	506,033
Outbound	Empty	4,436	6,540	10,793	11,756	11,091	13,859	12,157	8,906	5,278	5,715	7,832	6,018	104,381
	Loaded	32,997	35,664	28,820	29,249	30,853	35,281	32,758	35,279	34,867	34,253	38,607	34,302	402,930
Total Outbound		37,433	42,204	39,613	41,005	41,944	49,140	44,915	44,185	40,145	39,967	46,439	40,321	507,311
Total Empty		20,676	24,084	24,400	23,893	23,590	26,660	24,095	22,843	19,289	22,192	24,222	21,828	277,773
Total Loaded		56,363	61,058	57,889	56,296	59,029	69,281	66,192	65,846	60,255	60,411	65,287	57,665	735,572
Total TEUs		77,039	85,141	82,289	80,189	82,619	95,941	90,287	88,689	79,544	82,603	89,509	79,494	1,013,344

		Calendar Year 2015												TOTAL
		JAN	FEB	MAR	APR	MAY	JUN	JUL	AUG	SEP	OCT	NOV	DEC	TOTAL
Inbound	Empty	19,025												19,025
	Loaded	28,927												28,927
Total Inbound		47,952	-	-	-	-	-	-	-	-	-	-	-	47,952
Outbound	Empty	11,267												11,267
	Loaded	34,410												34,410
Total Outbound		45,677	-	-	-	-	-	-	-	-	-	-	-	45,677
Total Empty		30,292	-	-	-	-	-	-	-	-	-	-	-	30,292
Total Loaded		63,337	-	-	-	-	-	-	-	-	-	-	-	63,337
Total TEUs		93,629	-	-	-	-	-	-	-	-	-	-	-	93,629

		Calendar Year 2014												TOTAL
		JAN	FEB	MAR	APR	MAY	JUN	JUL	AUG	SEP	OCT	NOV	DEC	TOTAL
Inbound	Empty	12,137	12,499	12,801	11,938	13,937	14,011	16,478	16,390	15,810	18,318	18,940	14,620	177,879
	Loaded	27,047	28,176	34,000	33,434	30,567	25,388	26,158	26,680	23,363	23,429	26,091	27,846	332,179
Total Inbound		39,184	40,675	46,801	45,372	44,504	39,399	42,636	43,070	39,173	41,747	45,031	42,466	510,058
Outbound	Empty	11,756	11,091	13,859	12,157	8,906	5,278	5,715	7,832	6,018	6,683	6,145	9,499	104,939
	Loaded	29,249	30,853	35,281	32,758	35,279	34,867	34,253	38,607	34,302	38,244	40,625	32,398	416,716
Total Outbound		41,005	41,944	49,140	44,915	44,185	40,145	39,967	46,439	40,321	44,927	46,770	41,897	521,655
Total Empty		23,893	23,590	26,660	24,095	22,843	19,289	22,192	24,222	21,828	25,001	25,085	24,119	282,818
Total Loaded		56,296	59,029	69,281	66,192	65,846	60,255	60,411	65,287	57,665	61,673	66,716	60,244	748,895
Total TEUs		80,189	82,619	95,941	90,287	88,689	79,544	82,603	89,509	79,494	86,674	91,801	84,363	1,031,713

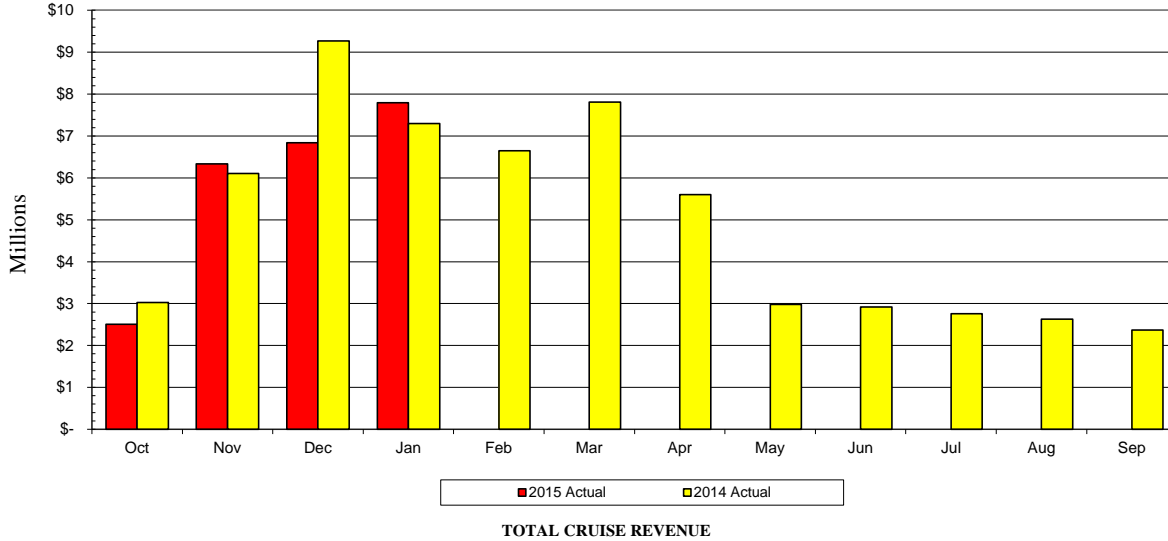
Cruise Revenue Reports

PORT EVERGLADES DEPARTMENT

FISCAL YEAR 2015 REVENUE TO FISCAL YEAR 2014 REVENUE REPORT

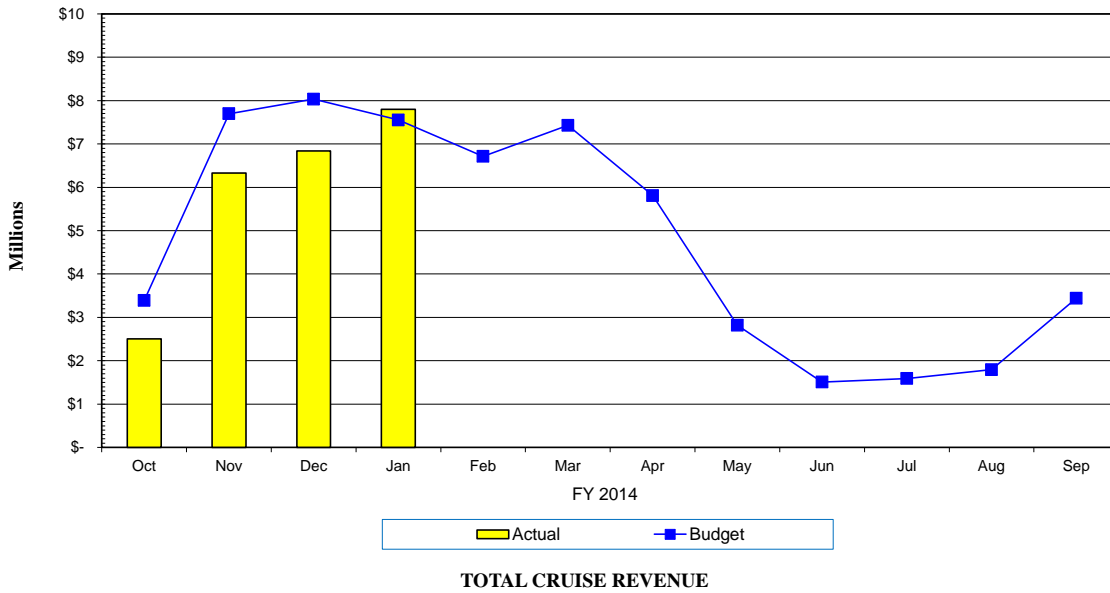
JANUARY 2015

FISCAL MONTH			F Y T D				
<u>2015 Actual</u>	<u>2014 Actual</u>	<u>Variance</u>			<u>2015 Actual</u>	<u>2014 Actual</u>	<u>Variance</u>
			1020	Cruise			
\$25,905	\$9,396	\$16,509	4514	Cruise Wharfage	\$87,620	\$57,679	\$29,941
0	0	0	4515	Ferry Wharfage	12,351	0	12,351
0	0	0	4518	Wharfage Discount	0	0	0
5,928	1,425	4,503	4523	Term. Sec. Reimb.	30,780	12,056	18,724
7,666,134	7,210,242	455,892	4524	Port User Charge	22,887,217	25,307,204	(2,419,987)
0	0	0	4526	Port User Charge CCRC *	0	0	0
30,000	30,000	0	4527	Ferry Service Revenue	120,000	120,000	0
24,559	8,707	15,852	4531	Dockage	174,134	63,081	111,053
0	0	0	4539	Dockage Discount	0	0	0
1,601	389	1,212	4541	Harbormaster	6,604	3,110	3,494
5,060	1,395	3,665	4542	Linehandlers	26,395	10,825	15,570
4,453	9,690	(5,237)	4543	Tug Fees	22,305	44,023	(21,718)
0	0	0	4568	Crane/Heavy Lift	0	0	0
9,592	0	9,592	4572	Penalties	11,950	5,893	6,057
2,410	1,824	586	4581	Fresh Water	10,043	5,522	4,521
0	0	0	4583	Sewage Disposal	1,788	0	1,788
0	0	0	4587	Reefer Electricity	0	0	0
522	132	390	4588	Reimburse Electric	3,655	1,089	2,566
1,942	491	1,451	4589	Reimburse Labor	10,260	4,095	6,165
19,223	22,563	(3,340)	4602	Electric Forklift/Cruise	66,364	68,719	(2,355)
0	0	0	6990	Misc Revenue	0	0	0
<u>\$7,797,329</u>	<u>\$7,296,254</u>	<u>\$501,075</u>		Total Cruise Revenue	<u>\$23,471,466</u>	<u>\$25,703,296</u>	<u>(\$2,231,830)</u>



**PORT EVERGLADES DEPARTMENT
FISCAL YEAR 2015 REVENUE TO BUDGET REPORT
JANUARY 2015**

FISCAL MONTH			F Y T D				
Actual	Budget	Variance	1020 Cruise		Actual	Budget	Variance
\$25,905	\$26,000	(\$95)	4514	Cruise Wharfage	\$87,620	\$71,300	\$16,320
0	0	0	4515	Ferry Wharfage	12,351	0	12,351
0	0	0	4518	Whrg. Vol. Incentives	0	0	0
5,928	15,000	(9,072)	4523	Term. Sec. Reimb.	30,780	40,900	(10,120)
7,666,134	7,408,100	258,034	4524	Port User Charge	22,887,217	26,227,600	(3,340,383)
30,000	30,000	0	4527	Ferry Service Revenue	120,000	120,000	0
24,559	32,200	(7,641)	4531	Dockage	174,134	84,300	89,834
0	0	0	4539	Dockage Vol. Incentives	0	0	0
1,601	1,800	(199)	4541	Harbormaster	6,604	4,800	1,804
5,060	3,300	1,760	4542	Linehandlers	26,395	8,700	17,695
4,453	0	4,453	4543	Tug Fees	22,305	0	22,305
0	0	0	4568	Crane/Heavy Lift	0	0	0
9,592	0	9,592	4572	Penalties	11,950	0	11,950
2,410	5,300	(2,890)	4581	Fresh Water	10,043	15,600	(5,557)
0	0	0	4583	Sewage Disposal	1,788	0	1,788
0	0	0	4587	Reefer Electricity	0	0	0
522	800	(278)	4588	Reimburse Electric	3,655	2,000	1,655
1,942	2,600	(658)	4589	Reimburse Labor	10,260	6,700	3,560
19,223	21,900	(2,677)	4602	Electric Forklift Cruise	66,364	67,000	(636)
0	6,700	(6,700)	4544	Other Revenue	0	26,800	(26,800)
\$7,797,329	\$7,553,700	\$243,629	Total Cruise Revenue		\$23,471,466	\$26,675,700	(\$3,204,234)



PORT EVERGLADES**Cruise Operators Minimum Guarantee for Contract Year to Date
January 2015**

OPERATOR	Next Contract Year End	Minimum Guaranteed units	Minimum Guaranteed Amount	Tiers	Contract YTD Amount
Carnival Corporation	09/01/15	Passengers Movement	1,700,000		831,852
Royal Caribbean Cruises Limited	12/31/15	Guaranteed Payment	\$ 30,570,064.45		\$ 3,772,515
		Passengers Movement	2,180,652	Note 1	269,104
Balearia Caribbean Ltd., Corp	11/30/15	Passengers Movement	1 - 75,000	Tier 1	22,801
			75,001 - 150,000	Tier 2	
			150,001 - 225,000	Tier 3	
			Over - 225,000	Tier 4	

Note 1: Effective January 1, 2015, RCL's forecasted passenger movement for the contact year ending 12/31/15 was 2,180,652.

Bulk & Break Bulk Revenue Reports

**PORT EVERGLADES DEPARTMENT
FISCAL YEAR 2015 REVENUE TO FISCAL YEAR 2014 REVENUE REPORT**

JANUARY 2015

FISCAL MONTH								F Y T D			
<u>2015 Actual</u>	<u>2014 Actual</u>	<u>Variance</u>						<u>2015 Actual</u>	<u>2014 Actual</u>	<u>Variance</u>	
			1025	Bulk							
\$136,240	\$81,609	\$54,631	4511	Cargo Wharfage					\$452,467	\$334,235	\$118,232
0	0	0	4519	Whrg. Vol. Incentives					0	0	0
9,511	8,056	1,455	4522	Security Fees					39,890	29,843	10,047
79,100	75,827	3,273	4531	Dockage					381,279	271,751	109,528
2,782	2,230	552	4541	Harbormaster					10,559	9,862	697
7,260	5,631	1,629	4542	Linehandlers					23,599	25,027	(1,428)
3,953	2,615	1,338	4543	Tug Fees					11,905	12,218	(313)
0	0	0	4553	Grid Rental					0	0	0
940	0	940	4572	Penalties					940	0	940
116	318	(202)	4581	Fresh Water					2,497	1,468	1,029
0	0	0	4588	Reimburse Electric					0	0	0
0	0	0	4589	Reimburse Labor					0	0	0
<u>0</u>	<u>0</u>	<u>0</u>	6990	Misc. Revenue					<u>0</u>	<u>0</u>	<u>0</u>
<u>\$239,902</u>	<u>\$176,286</u>	<u>\$63,616</u>	Total Bulk Revenue					<u>\$923,136</u>	<u>\$684,404</u>	<u>\$238,732</u>	
			1030	Break Bulk							
\$92,626	\$68,663	\$23,963	4511	Cargo Wharfage					\$389,690	\$263,448	\$126,242
0	0	0	4512	Box Wharfage					14	0	14
0	0	0	4519	Whrg. Vol. Incentives					0	0	0
8,583	10,911	(2,328)	4522	Security Fees					45,153	37,014	8,139
66,631	112,571	(45,940)	4531	Dockage					426,582	372,533	54,049
3,752	4,031	(279)	4541	Harbormaster					19,749	12,563	7,186
12,367	13,005	(638)	4542	Linehandlers					53,399	49,894	3,505
3,812	6,985	(3,173)	4543	Tug Fees					15,630	18,658	(3,028)
106,311	24,423	81,888	4551	Storage					297,982	92,658	205,324
0	0	0	4552	Demurrage					0	0	0
5,439	4,123	1,316	4566	Crane Rental					25,218	21,194	4,024
0	0	0	4568	Crane/Heavy Lift					0	0	0
0	0	0	4569	Crane Vol. Incentives					0	0	0
0	0	0	4572	Penalties					0	851	(851)
649	379	270	4581	Fresh Water					2,924	4,049	(1,125)
0	0	0	4583	Sewage Disposal					0	0	0
0	0	0	4588	Reimburse Electric					0	0	0
0	0	0	4589	Reimburse Labor					0	328	(328)
<u>0</u>	<u>0</u>	<u>0</u>	6990	Misc. Revenue					<u>0</u>	<u>0</u>	<u>0</u>
<u>\$300,170</u>	<u>\$245,091</u>	<u>\$55,079</u>						<u>\$1,276,341</u>	<u>\$873,190</u>	<u>\$403,151</u>	

**PORT EVERGLADES DEPARTMENT
FISCAL YEAR 2015 REVENUE TO BUDGET REPORT
JANUARY 2015**

FISCAL MONTH			F Y T D				
<u>Actual</u>	<u>Budget</u>	<u>Variance</u>			<u>Actual</u>	<u>Budget</u>	<u>Variance</u>
			1025	Bulk			
\$136,240	\$90,100	\$46,140	4511	Cargo Wharfage	\$452,467	\$342,700	\$109,767
0	0	0	4519	Whrg. Vol. Incentives	0	0	0
9,511	6,900	2,611	4522	Security Fees	39,890	28,600	11,290
79,100	66,000	13,100	4531	Dockage	381,279	261,800	119,479
2,782	2,700	82	4541	Harbormaster	10,559	10,300	259
7,260	5,600	1,660	4542	Linehandlers	23,599	25,000	(1,401)
3,953	3,200	753	4543	Tug Fees	11,905	12,700	(795)
0	0	0	4553	Grid Rental	0	0	0
940	0	940	4572	Penalties	940	0	940
116	1,000	(884)	4581	Fresh Water	2,497	2,200	297
0	0	0	4588	Reimburse Electric	0	0	0
0	0	0	4589	Reimburse Labor	0	0	0
<u>0</u>	<u>0</u>	<u>0</u>	6990	Misc. Revenue	<u>0</u>	<u>0</u>	<u>0</u>
<u>\$239,902</u>	<u>\$175,500</u>	<u>\$64,402</u>		Total Bulk Revenue	<u>\$923,136</u>	<u>\$683,300</u>	<u>\$239,836</u>
			1030	Break Bulk			
92,626	31,500	61,126	4511	Cargo Wharfage	389,690	226,300	163,390
0	0	0	4512	Box Wharfage	14	0	14
0	0	0	4519	Whrg. Vol. Incentives	0	0	0
8,583	3,300	5,283	4522	Security Fees	45,153	29,300	15,853
66,631	38,600	28,031	4531	Dockage	426,582	298,600	127,982
3,752	2,300	1,452	4541	Harbormaster	19,749	10,900	8,849
12,367	6,400	5,967	4542	Linehandlers	53,399	43,400	9,999
3,812	2,800	1,012	4543	Tug Fees	15,630	11,100	4,530
106,311	4,300	102,011	4551	Storage	297,982	72,500	225,482
0	0	0	4552	Demurrage	0	0	0
5,439	4,100	1,339	4566	Crane Rental	25,218	21,200	4,018
0	0	0	4568	Crane-Heavy Lift	0	0	0
0	0	0	4569	Crane Vol. Incentives	0	0	0
0	0	0	4572	Penalties	0	0	0
649	600	49	4581	Fresh Water	2,924	4,300	(1,376)
0	0	0	4583	Sewage Disposal	0	0	0
0	0	0	4588	Reimburse Electric	0	0	0
0	300	(300)	4589	Reimburse Labor	0	600	(600)
<u>0</u>	<u>0</u>	<u>0</u>	6990	Misc. Revenue	<u>0</u>	<u>0</u>	<u>0</u>
<u>\$300,170</u>	<u>\$94,200</u>	<u>\$205,970</u>		Total Break Bulk Revenue	<u>\$1,276,341</u>	<u>\$718,200</u>	<u>\$558,141</u>

Real Estate Revenue Reports

**PORT EVERGLADES DEPARTMENT
FISCAL YEAR 2015 REVENUE TO FISCAL YEAR 2014 REVENUE REPORT**

JANUARY 2015

FISCAL MONTH			F Y T D				
<u>2015 Actual</u>	<u>2014 Actual</u>	<u>Variance</u>			<u>2015 Actual</u>	<u>2014 Actual</u>	<u>Variance</u>
			1050	Real Estate			
\$23,076	\$31,620	(\$8,544)	4553	Grid Rental	\$124,241	\$132,900	(\$8,659)
802,037	715,640	86,397	4561	Land	3,084,507	2,673,512	410,995
182,868	171,738	11,130	4562	Offices & Off. Bldgs	714,685	684,144	30,541
0	0	0	4563	Restaurants	0	0	0
206,080	210,344	(4,264)	4564	Warehouses	830,317	867,543	(37,226)
0	0	0	4565	Easements	114,777	42,744	72,033
5,385	12,096	(6,711)	4573	Commissions	9,055	17,706	(8,651)
944	620	324	4576	Late Rent Fees	3,420	3,410	10
0	0	0	4581	Fresh Water	381	0	381
0	0	0	4583	Sewage Disposal	0	0	0
37,649	26,894	10,755	4585	Licenses & Permits	139,293	146,980	(7,687)
20,588	21,491	(903)	4588	Reimburse Electric	86,677	89,304	(2,627)
16,276		16,276	4608	Payment in Lieu of Rent -FEC	52,064	0	52,064
0		0	6940	Reimbursement - Other	0	0	0
75,336	0	75,336	6982	Fire Assessment Reimb.	75,336	0	75,336
	0	0	6990	Misc. Revenue	0	0	0
<u>\$1,370,239</u>	<u>\$1,190,443</u>	<u>\$179,796</u>		Total Real Estate Revenue	<u>\$5,234,753</u>	<u>\$4,658,243</u>	<u>\$576,510</u>
			1055	F T Z			
\$17,702	\$25,700	(\$7,998)	4551	Storage	\$89,973	\$103,400	(\$13,427)
23,625	24,029	(404)	4554	Zone Fees	105,924	98,089	7,835
4,311	4,339	(28)	4588	Reimburse Electric	18,132	17,996	136
0	0	0	4589	Reimburse Labor	0	0	0
76000	59,000	17,000	4600	Annual Subzone Fees	76,000	59,000	17,000
269	0	269	6940	Reimbursement - Other	3,386	0	3,386
0	466	(466)	6990	Misc. Revenue	0	134	(134)
<u>\$121,907</u>	<u>\$113,534</u>	<u>\$8,373</u>		Total FTZ Revenue	<u>\$293,415</u>	<u>\$278,619</u>	<u>\$14,796</u>
			2060	Rail Revenue			
\$0	\$0	\$0	4606	Rail Revenues - FEC	\$0	\$0	\$0
0	0	0	4607	Rail Revenues - Motiva	0	0	0
<u>\$0</u>	<u>\$0</u>	<u>\$0</u>		Total Rail Revenues	<u>\$0</u>	<u>\$0</u>	<u>\$0</u>

**PORT EVERGLADES DEPARTMENT
FISCAL YEAR 2015 REVENUE TO FISCAL YEAR 2014 REVENUE REPORT**

JANUARY 2015

FISCAL MONTH							F Y T D		
<u>2015 Actual</u>	<u>2014 Actual</u>	<u>Variance</u>					<u>2015 Actual</u>	<u>2014 Actual</u>	<u>Variance</u>
			2010	Midport Garage					
\$0	\$0	\$0	4573	Commissions			\$0	\$0	\$0
14,335	13,957	378	4593	Garage - Other			49,372	47,375	1,997
736,543	681,251	55,292	4594	Garage - Cruise			2,529,189	2,192,840	336,349
0	0	0	4595	Garage - Conv. Ctr.			0	0	0
4,707	3,766	941	4596	Oversize Vehicle			12,365	9,607	2,758
0	0	0	4597	Valet Parking			0	0	0
0	0	0	4598	Overflow Parking			0	0	0
<u>0</u>	<u>0</u>	<u>0</u>	6990	Misc. Revenue			<u>0</u>	<u>0</u>	<u>0</u>
<u>\$755,585</u>	<u>\$698,974</u>	<u>\$56,611</u>	Total Midport Garage Revenue				<u>\$2,590,926</u>	<u>\$2,249,822</u>	<u>\$341,104</u>
			2020	Northport Garage					
\$0	\$0	\$0	4573	Commissions			\$0	\$0	\$0
0	0	0	4592	Garage - Marketplace			0	0	0
1,220	0	1,220	4593	Garage - Other			1,925	14	1,911
359,998	265,731	94,267	4594	Garage - Cruise			1,053,762	777,572	276,190
69,735	42,867	26,868	4595	Garage - Conv. Ctr.			291,606	264,667	26,939
1,969	1,935	34	4596	Oversize Vehicle			8,281	8,425	(144)
0	0	0	4597	Valet Parking			0	0	0
68	0	68	4598	Overflow Parking			68	4,720	(4,652)
0	0	0	4599	Exhibitor Parking			0	0	0
<u>0</u>	<u>0</u>	<u>0</u>	6990	Misc. Revenue			<u>0</u>	<u>0</u>	<u>0</u>
<u>\$432,990</u>	<u>\$310,533</u>	<u>\$122,457</u>					<u>\$1,355,642</u>	<u>\$1,055,398</u>	<u>\$300,244</u>
<u>\$1,188,575</u>	<u>\$1,009,507</u>	<u>\$179,068</u>	Total Parking Facilities Revenue				<u>\$3,946,568</u>	<u>\$3,305,220</u>	<u>\$641,348</u>

**PORT EVERGLADES DEPARTMENT
FISCAL YEAR 2015 REVENUE TO BUDGET REPORT
JANUARY 2015**

FISCAL MONTH			F Y T D				
<u>Actual</u>	<u>Budget</u>	<u>Variance</u>			<u>Actual</u>	<u>Budget</u>	<u>Variance</u>
			1050	Real Estate			
\$23,076	\$7,558	\$15,518	4553	Grid Rental	\$124,241	\$30,232	\$94,009
802,037	760,300	41,737	4561	Land	3,084,507	3,113,100	(28,593)
182,868	172,000	10,868	4562	Offices & Off. Bldgs.	714,685	677,000	37,685
0	0	0	4563	Restaurants	0	0	0
206,080	197,960	8,120	4564	Warehouses	830,317	733,760	96,557
0	0	0	4565	Easements	114,777	44,200	70,577
5,385	6,600	(1,215)	4573	Commissions	9,055	19,800	(10,745)
944	1,000	(56)	4576	Late Rent Fees	3,420	4,000	(580)
0	0	0	4581	Fresh Water	381	0	381
0	0	0	4583	Sewage Disposal	0	0	0
37,649	38,200	(551)	4585	Licenses & Permits	139,293	167,750	(28,457)
20,588	22,650	(2,062)	4588	Reimburse Electric	86,677	90,600	(3,923)
16,276	0	16,276	4608	Payment in Lieu of Rent -FEC	52,064	0	52,064
0	0	0	6940	Reimbursement - Other	0	0	0
75,336	0	75,336	6982	Fire Assessment Reimb.	75,336	0	75,336
<u>\$1,370,239</u>	<u>\$1,206,268</u>	<u>\$163,971</u>		Total Real Estate Revenue	<u>\$5,234,753</u>	<u>\$4,880,442</u>	<u>\$354,311</u>
			1055	F T Z			
\$17,702	\$21,700	(\$3,998)	4551	Storage	\$89,973	\$86,800	\$3,173
23,625	22,600	1,025	4554	FTZ Zone Transaction Fees	105,924	91,200	14,724
4,311	5,000	(689)	4588	Reimburse Electric	18,132	20,000	(1,868)
0	0	0	4589	Reimburse Labor	0	0	0
76,000	59,000	17,000	4600	Annual Sub Zone Fees	76,000	118,000	(42,000)
269	200	69	6940	Reimbursement - Other	3,386	800	2,586
0	0	0	6990	Misc. Revenue	0	0	0
<u>\$121,907</u>	<u>\$108,500</u>	<u>\$13,407</u>		Total FTZ Revenue	<u>\$293,415</u>	<u>\$316,800</u>	<u>(\$23,385)</u>
			2060	Rail Revenue			
\$0	\$0	\$0	4606	Rail Revenues - FEC	\$0	\$0	\$0
0	0	0	4607	Rail Revenues - Motiva	0	0	0
<u>\$0</u>	<u>\$0</u>	<u>\$0</u>		Total Rail Revenues	<u>\$0</u>	<u>\$0</u>	<u>\$0</u>

**PORT EVERGLADES DEPARTMENT
FISCAL YEAR 2015 REVENUE TO BUDGET REPORT
JANUARY 2015**

FISCAL MONTH			F Y T D					
<u>Actual</u>	<u>Budget</u>	<u>Variance</u>			<u>Actual</u>	<u>Budget</u>	<u>Variance</u>	
			2010	Midport Garage				
\$0	\$0	\$0	4573	Commissions	\$0	\$0	\$0	
14,335	13,700	635	4593	Garage - Other	49,372	43,700	5,672	
736,543	679,800	56,743	4594	Garage - Cruise	2,529,189	2,208,800	320,389	
0	0	0	4595	Garage - Conv. Ctr	0	0	0	
4,707	2,000	2,707	4596	Oversize Vehicle	12,365	4,100	8,265	
0	0	0	4597	Valet Parking	0	0	0	
0	0	0	4598	Overflow Parking	0	0	0	
<u>0</u>	<u>0</u>	<u>0</u>	6990	Misc. Revenue	<u>0</u>	<u>0</u>	<u>0</u>	
<u>\$755,585</u>	<u>\$695,500</u>	<u>\$60,085</u>		Total Midport Garage Revenue	<u>\$2,590,926</u>	<u>\$2,256,600</u>	<u>\$334,326</u>	
			2020	Northport Garage				
\$0	\$0	\$0	4573	Commissions	\$0	\$0	\$0	
0	0	0	4592	Garage - Marketplace	0	0	0	
1,220	0	1,220	4593	Garage - Other	1,925	0	1,925	
359,998	257,900	102,098	4594	Garage - Cruise	1,053,762	768,500	285,262	
69,735	49,900	19,835	4595	Garage - Conv. Ctr	291,606	263,300	28,306	
1,969	2,200	(231)	4596	Oversize Vehicle	8,281	7,200	1,081	
0	0	0	4597	Valet Parking	0	0	0	
68	0	68	4598	Overflow Parking	68	1,200	(1,132)	
0	0	0	4599	Exhibitor Parking	0	0	0	
<u>0</u>	<u>0</u>	<u>0</u>	6990	Misc. Revenue	<u>0</u>	<u>0</u>	<u>0</u>	
<u>\$432,990</u>	<u>\$310,000</u>	<u>\$122,990</u>		Total Northport Garage Revenue	<u>\$1,355,642</u>	<u>\$1,040,200</u>	<u>\$315,442</u>	
<u>\$1,188,575</u>	<u>\$1,005,500</u>	<u>\$183,075</u>		Total Parking Facilities Revenue	<u>\$3,946,568</u>	<u>\$3,296,800</u>	<u>\$649,768</u>	

Other Revenue Center Reports

PORT EVERGLADES DEPARTMENT
FISCAL YEAR 2015 REVENUE TO FISCAL YEAR 2014 REVENUE REPORT

JANUARY 2015

FISCAL MONTH							F Y T D		
<u>2015 Actual</u>	<u>2014 Actual</u>	<u>Variance</u>					<u>2015 Actual</u>	<u>2014 Actual</u>	<u>Variance</u>
			1045	Lay-In					
\$0	\$0	\$0	4511	Cargo Wharfage		\$0	\$0	\$0	
2,819	1,642	1,177	4522	Security Fees		21,679	18,960	2,719	
43,127	22,105	21,022	4531	Dockage		329,912	277,232	52,680	
0	0	0	4539	Dockage Vol. Incentives		0	0	0	
2,613	3,683	(1,070)	4541	Harbormaster		18,990	30,854	(11,864)	
5,782	2,123	3,659	4542	Linehandlers		30,841	36,707	(5,866)	
1,785	0	1,785	4543	Tug Fees		3,561	3,649	(88)	
408	2,041	(1,633)	4581	Fresh Water		2,389	8,770	(6,381)	
0	0	0	4583	Sewage Disposal		0	5,104	(5,104)	
0	0	0	4587	Reefer Electricity		0	0	0	
0	0	0	4588	Reimburse Electric		0	0	0	
0	0	0	4589	Reimburse Labor		0	4,053	(4,053)	
0	0	0	6990	Misc. Revenue		0	0	0	
<u>\$56,534</u>	<u>\$31,594</u>	<u>\$24,940</u>	Total Lay-In Revenue			<u>\$407,372</u>	<u>\$385,329</u>	<u>\$22,043</u>	
			1060	Public Safety Services					
\$7,152	\$28,607	(\$21,455)	4522	Security Fees		\$28,607	\$28,607	\$0	
12,382	9,313	3,069	4574	ID Badges		50,815	28,425	22,390	
1,000	1,000	0	4575	Dock Passes		3,600	4,500	(900)	
0	0	0	4585	Licenses & Permits		0	0	0	
49	89	(40)	5912	Moving Violations		652	515	137	
0	(21,455)	21,455	6990	Misc. Revenue		0	0	0	
<u>\$20,583</u>	<u>\$17,554</u>	<u>\$3,029</u>	Total Public Safety Revenue			<u>\$83,674</u>	<u>\$62,047</u>	<u>\$21,627</u>	
			3000	Finance					
\$14,115	\$9,724	\$4,391	4571	Finance Charges		\$62,792	\$27,524	\$35,268	
0	0	0	4572	Penalties		0	0	0	
0	0	0	4573	Commissions		0	0	0	
0	0	0	4576	Late Rent Fees		0	0	0	
0	0	0	4589	Reimburse Labor		0	0	0	
0	0	0	6982	Fire Assessment Reimb.		0	0	0	
0	0	0	6983	Payt inLieu of Taxes Reimburs		0	0	0	
0	1,179	(1,179)	6990	Misc. Revenue		0	6,032	(6,032)	
<u>\$14,115</u>	<u>\$10,903</u>	<u>\$3,212</u>	Total Finance Revenue			<u>\$62,792</u>	<u>\$33,556</u>	<u>\$29,236</u>	
<u>\$16,771,891</u>	<u>\$15,730,683</u>	<u>\$1,041,208</u>	TOTAL OPERATING REVENUE			<u>\$59,250,906</u>	<u>\$57,959,442</u>	<u>\$1,291,464</u>	

**PORT EVERGLADES DEPARTMENT
FISCAL YEAR 2015 REVENUE TO BUDGET REPORT
JANUARY 2015**

FISCAL MONTH			F Y T D			
<u>Actual</u>	<u>Budget</u>	<u>Variance</u>		<u>Actual</u>	<u>Budget</u>	<u>Variance</u>
			1045	Lay-In		
\$0	\$0	\$0	4511	Cargo Wharfage	\$0	\$0
2,819	3,750	(931)	4522	Security Fees	21,679	15,000
43,127	68,667	(25,540)	4531	Dockage	329,912	274,668
0	0	0	4539	Dockage Vol. Incentives	0	0
2,613	3,867	(1,254)	4541	Harbormaster	18,990	15,468
5,782	6,008	(226)	4542	Linehandlers	30,841	24,032
1,785	1,000	785	4543	Tug Fees	3,561	4,000
408	1,458	(1,050)	4581	Fresh Water	2,389	5,832
0	1,292	(1,292)	4583	Sewage Disposal	0	5,168
0	0	0	4587	Reefer Electricity	0	0
0	0	0	4588	Reimburse Electric	0	0
0	600	(600)	4589	Reimburse Labor	0	2,400
0	0	0	6990	Misc. Revenue	0	0
<u>\$56,534</u>	<u>\$86,642</u>	<u>(\$30,108)</u>		Total Lay-In Revenue	<u>\$407,372</u>	<u>\$346,568</u>
			1060	Public Safety Services		
\$7,152	\$7,080	\$72	4522	Security Fees	\$28,607	\$28,320
12,382	5,420	6,962	4574	ID Badges	50,815	21,680
1,000	1,250	(250)	4575	Dock Passes	3,600	5,000
0	0	0	4585	Licenses & Permits	0	0
49	250	(201)	5912	Moving Violations	652	1,000
0	0	0	6990	Misc. Revenue	0	0
<u>\$20,583</u>	<u>\$14,000</u>	<u>\$6,583</u>		Total Public Safety Revenue	<u>\$83,674</u>	<u>\$56,000</u>
			3000	Finance		
\$14,115	\$12,500	\$1,615	4571	Finance Charges	\$62,792	\$50,000
0	0	0	4572	Penalties	0	0
0	0	0	4573	Commissions	0	0
0	0	0	4576	Late Rent Fees	0	0
0	0	0	4589	Reimburse Labor	0	0
0	0	0	6982	Fire Assessment Reimb.	0	0
0	0	0	6983	Payt inLieu of Taxes Reimburs	0	0
0	0	0	6990	Misc. Revenue	0	0
<u>\$14,115</u>	<u>\$12,500</u>	<u>\$1,615</u>		Total Finance Revenue	<u>\$62,792</u>	<u>\$50,000</u>
<u>\$16,771,891</u>	<u>\$15,708,314</u>	<u>\$1,063,577</u>		TOTAL OPERATING REVENUE	<u>\$59,250,906</u>	<u>\$58,517,736</u>